

RISE



GET INVOLVED IN THE ACTION OF TRACKSIDE OR WATCH THE STARS WHILE YOU UNWIND, WHICHEVER YOU CHOOSE, REST ASSURED KNOWING THAT EACH SPACE HAS BEEN DESIGNED TO FIT HOW YOU LIKE TO LIVE.

An oasis awaits as your private retreat from trackside or a busy day as high ceilings and an expansive living space welcomes you home. A designer kitchen filled with European appliances helps you ease into comfort while a private balcony beacons your attention, views perfectly paired with a refreshing drink poured from the sleek wine and bar feature found in your effortlessly designed living area. While light and open living spaces eagerly await life moments that will be remembered for years to come.

The addition of a rooftop terrace with stunning views across the racecourse completes this designer residence.

KEY FEATURES

Private retreat, Trackside on the Morphettville Racecourse

Rooftop Terrace and Outdoor Kitchen

Expansive living options on one floor

High ceilings

Designer Kitchen

European appliances

Private Balconies

Reverse living to maximise views

Efficient and sustainable design with cross ventilation

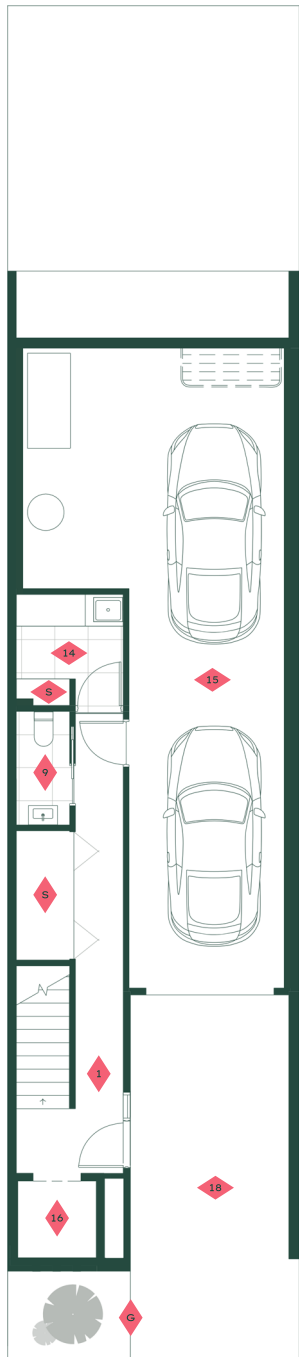
Light and open living spaces

Optional lift provision upgrade

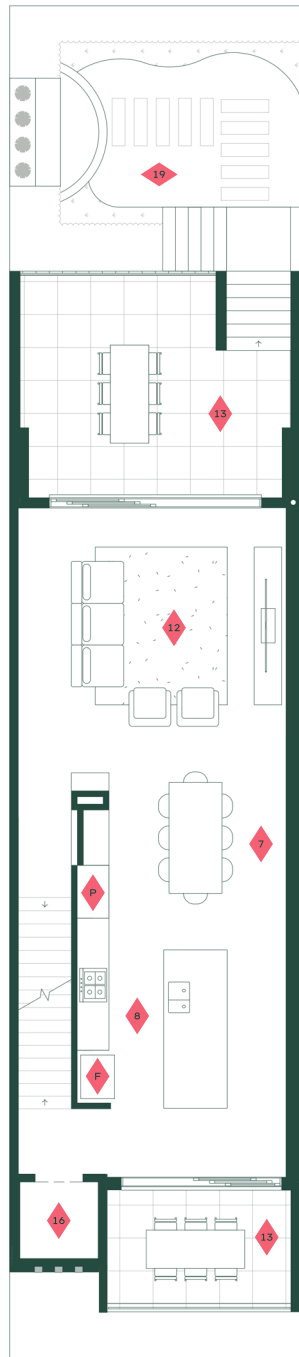


ARTIST IMPRESSION

↑
VIEW OF
MORPHETTVILLE
RACECOURSE

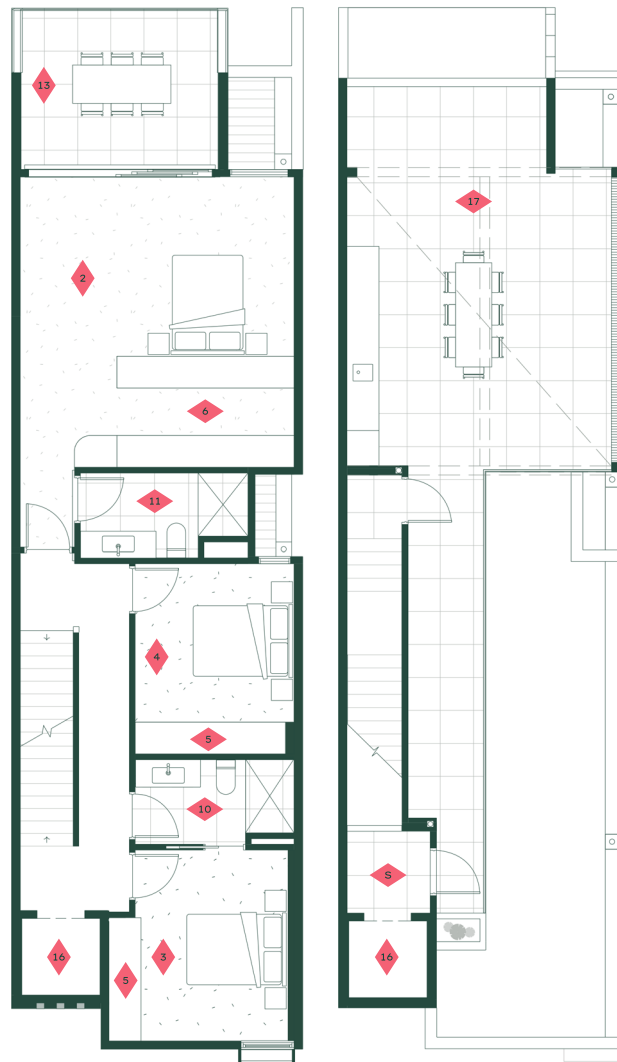


GROUND FLOOR



FIRST FLOOR

↑
VIEW OF MORPHETTVILLE RACECOURSE



SECOND FLOOR

THIRD FLOOR

RISE



HOUSE SIZE 338m²**

**INCL ROOFTOP TERRACE



- 1 ENTRY
- 2 MASTER SUITE
- 3 BEDROOM 2
- 4 BEDROOM 3
- 5 ROBE
- 6 WALK-IN ROBE
- 7 DINING
- 8 KITCHEN
- 9 POWDER ROOM
- 10 BATHROOM
- 11 ENSUITE
- 12 LIVING
- 13 BALCONY
- 14 LAUNDRY
- 15 GARAGE
- 16 LIFT PROVISION
- 17 ROOF TERRACE
- 18 DRIVEWAY
- 19 TRACKSIDE COURTYARD

- S STORAGE
- G GARDEN BED

