

SEACLIFF

V I L L A G E

Meridian



Artist Impression

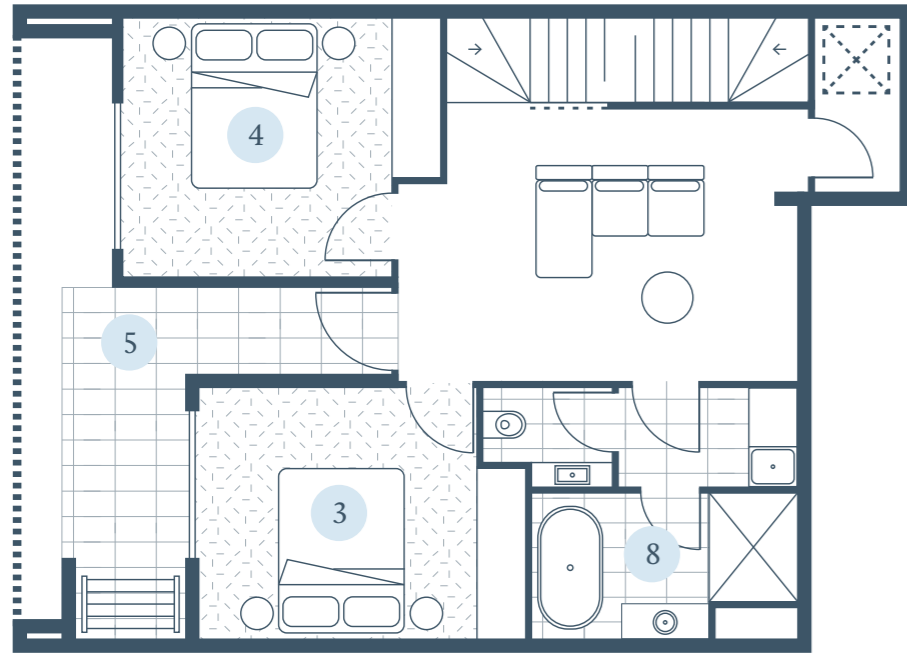
Discover coastal elegance, where every detail celebrates seaside luxury and the natural beauty of its surrounds.

Offering an elevated lifestyle across three levels, each home is designed with purpose and elegance. The ground floor welcomes you with a cozy lounge, perfect for family gatherings and everyday relaxation. Ascend to the first floor for views of the serene nature reserve, enhanced by open-plan spaces for entertaining and relaxing. Discover a secluded retreat on the second floor, where you can enjoy magnificent sunsets in complete privacy.

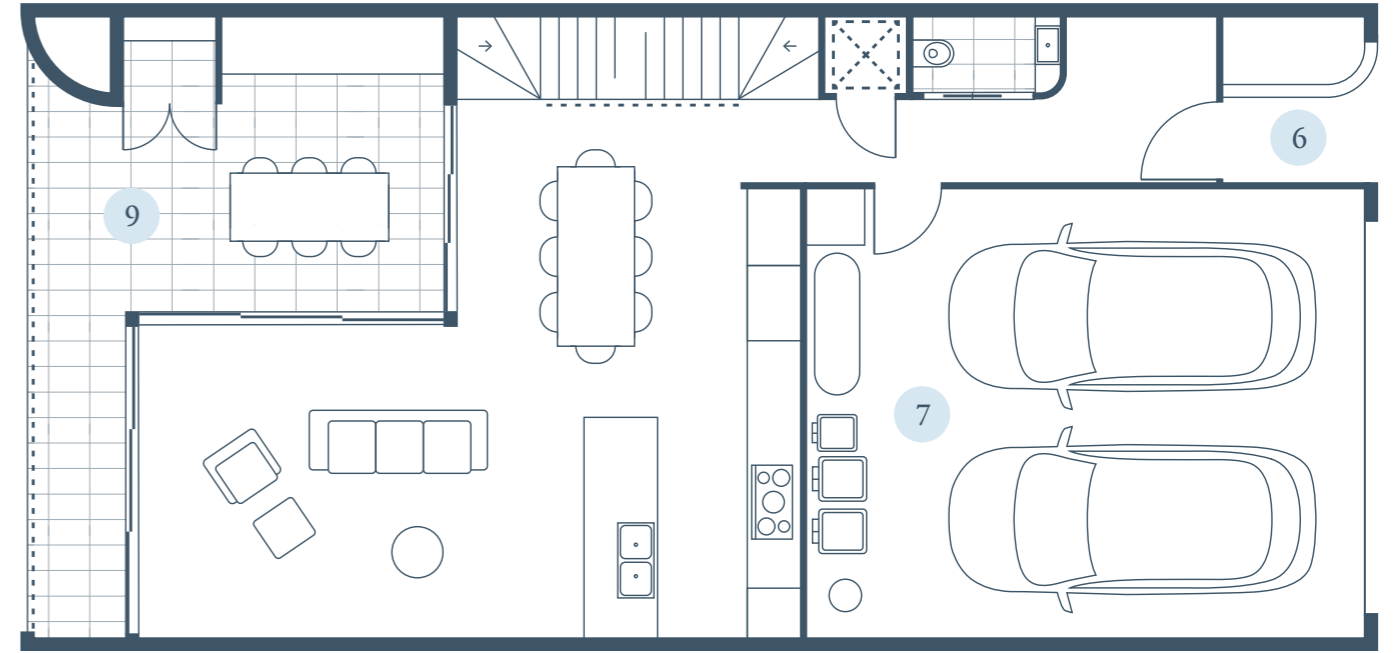
The master suite is a haven of tranquility, boasting a lavish ensuite bathroom and a chic dressing area. Designed with the details of luxury and comfort, the Meridian home provides an exceptional living experience.



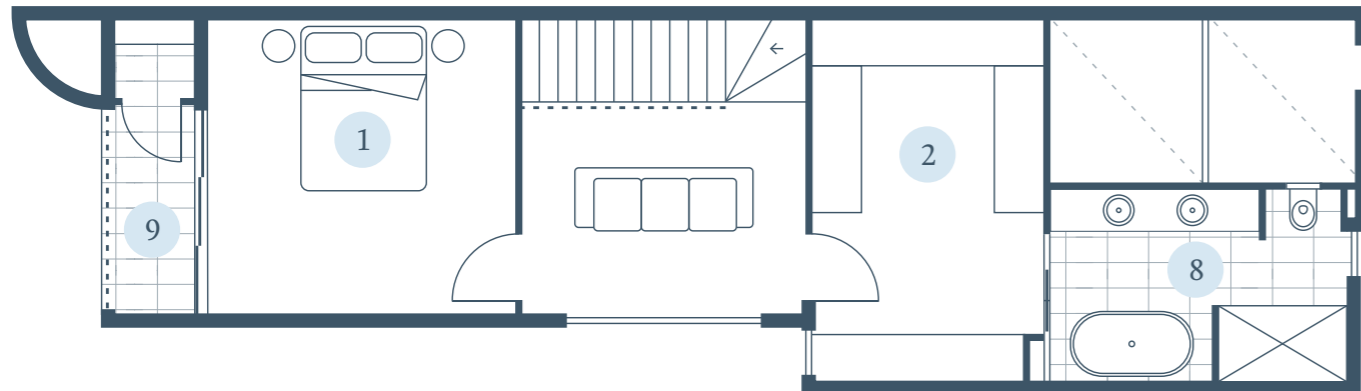
Ground Floor



First Floor



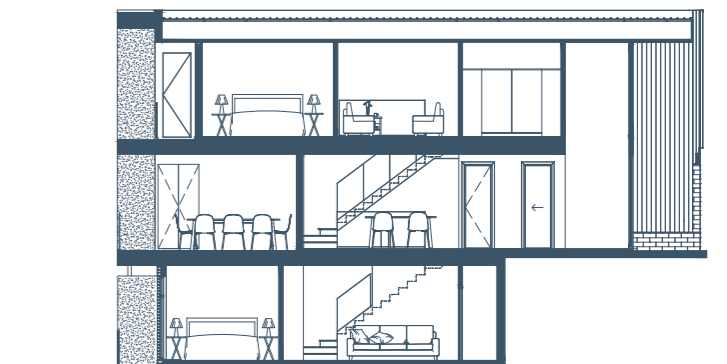
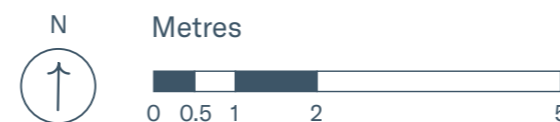
Second Floor



Key Features

- 1 Master Bedroom & Ensuite
- 2 Walk-in Robe
- 3 Bedroom 2
- 4 Bedroom 3
- 5 Terrace
- 6 Entry
- 7 Garage
- 8 Bath
- 9 Balcony

Balcony	27.58m ²
Ground Floor	75.75m ²
First Floor	103.53m ²
Second Floor	65.00m ²
Total	271.86m²





Artist Impression

Some of the features found in the Palisade:

High ceilings

Quality floor coverings

Stone benchtops

European appliances

Private balconies

Efficient and sustainable design

Light, open and dramatic living spaces

Private floor / master suite

Urban Break Scheme

Inspired by the cosmopolitan playground that is the urban environment, Urban Break acts as the elegant backdrop behind everyday life.

Neutrality is combined with high contrast elements to form an experience that is moody yet refined.

Botanical Tour Scheme

Earthy, and inviting, Botanical Tour explores a reconnection with the natural environment.

Warmth is exaggerated, creating a tranquil, sophisticated escape – both grounded and balanced.



Artist Impression



Artist Impression

Seaside Stay Scheme

A relaxed palette where warm timbers meet fresh, cool tones inspired by the classic Seaside Stay.

Bright and Crisp, Seaside Stay is an uncomplicated, contemporary translation of sun, sand, sky, and sea.



A masterpiece of design.

Every element of this unique and boutique address is the product of careful and thoughtful design. The bespoke homes are no exception.

Designed by Studio Nine Architects, each of these homes take advantage of its elevated aspect. Materials reflect the coastal location, and northern light floods spaces in winter.

Studio Nine Architects is an Adelaide based architecture and interior design studio. From humble beginnings in 1998, they are now one of the state's largest studio's consisting of a team of over 50 design and support staff with a diverse portfolio of projects.



Display Suite
Open 7 days 11 - 5pm
Clubhouse Road,
Seacliff Park SA 5049

08 7201 3977
seacliffvillage.com.au



Proudly marketed by
LIVER HUME

villawood
properties

The information contained in this document is given for general information purposes only. All plans, dimensions and particulars herein, whether by measurement or visual representation, are for general information only and do not constitute any representation by the vendor or by its agents or representatives. Changes will undoubtedly be made during development, and the dimensions, fittings, finishes and specifications are therefore subject to change. The furniture, goods and chattels depicted in this document are not included with any sale. No warranty is given, either expressly or implied and all interested parties should not rely on the information contained herein and should make their own enquiries before committing to any purchase. Internal areas are measured in accordance with the PCA (Property Council of Australia) Residential Standards. RLA 306035