

THE SANCTUARY

AT REDSTONE



7-STAR LIVING

Redstone.



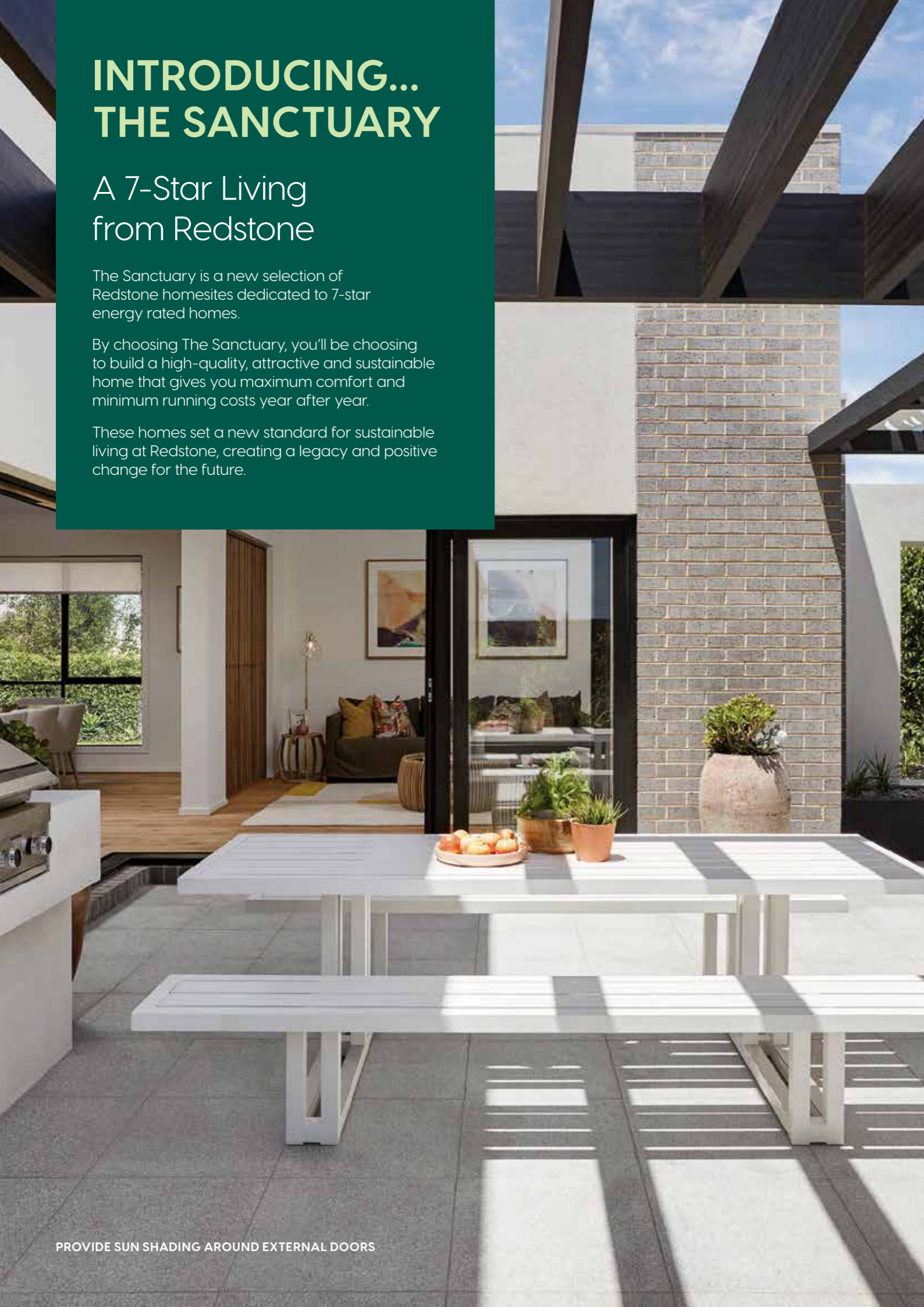
INTRODUCING... THE SANCTUARY

A 7-Star Living from Redstone

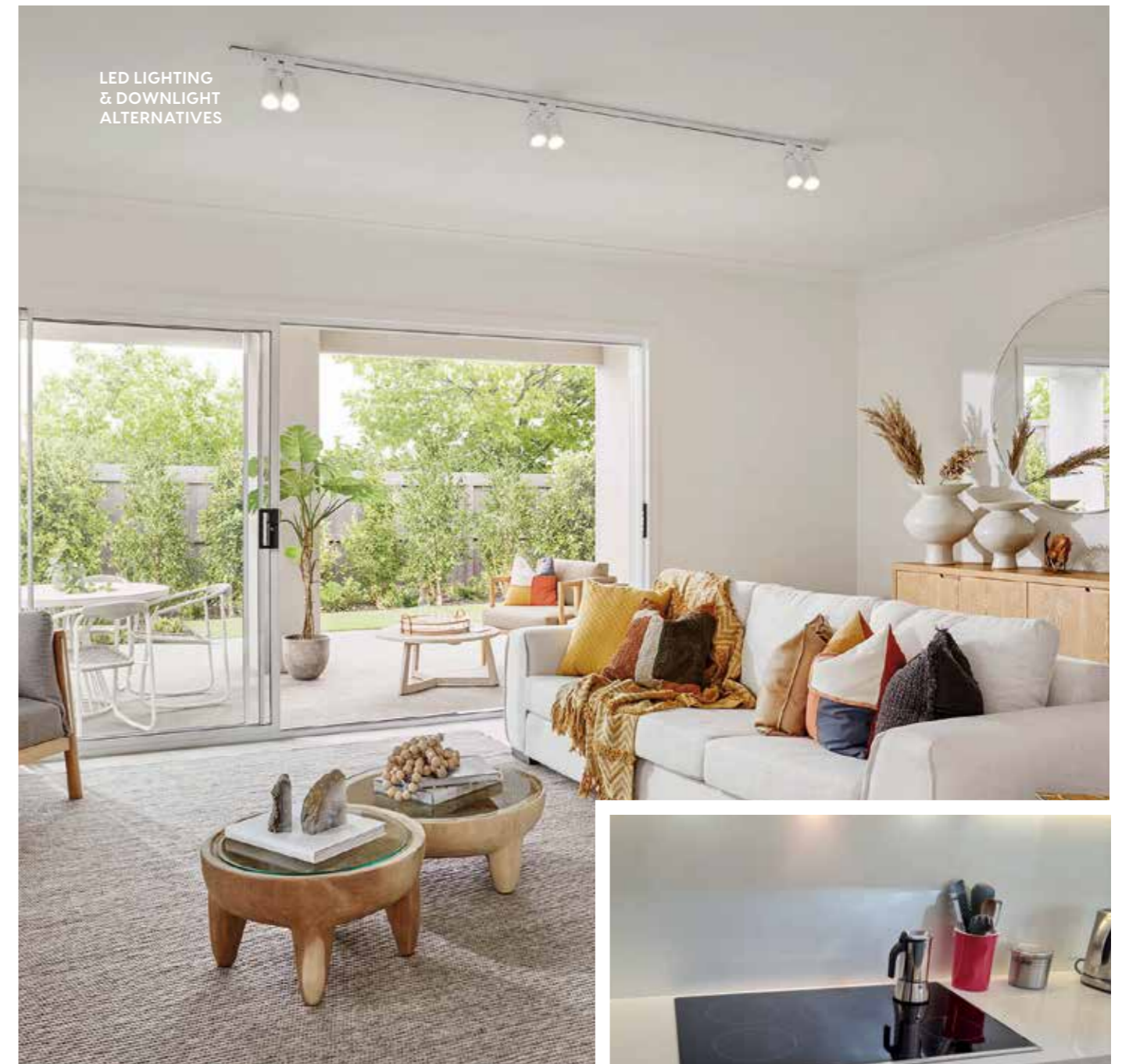
The Sanctuary is a new selection of Redstone homesites dedicated to 7-star energy rated homes.

By choosing The Sanctuary, you'll be choosing to build a high-quality, attractive and sustainable home that gives you maximum comfort and minimum running costs year after year.

These homes set a new standard for sustainable living at Redstone, creating a legacy and positive change for the future.

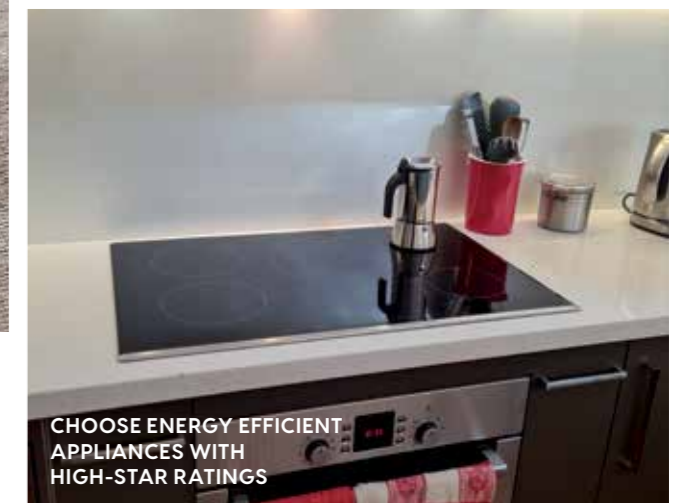


PROVIDE SUN SHADING AROUND EXTERNAL DOORS



LED LIGHTING
& DOWNLIGHT
ALTERNATIVES

Images courtesy of Arden Homes.



CHOOSE ENERGY EFFICIENT
APPLIANCES WITH
HIGH-STAR RATINGS

Images courtesy of Keech

HOW DO I BUILD A 7-STAR HOME?

6-stars is the current minimum standard for new homes. 7-star sustainability is just one step further and achieved through initiatives such as:

- Increased levels of insulation
- Higher-quality window products, such as double-glazing
- Energy-smart house plans which allow for best use of the sun – keeping it out in summer with eaves, whilst allowing it to shine through in winter
- Keeping south and west-facing windows reasonably small
- Reducing the number of items penetrating the ceiling, such as lights, ducts and skylights
- Cross-flow ventilation to let homes cool down after a hot day

7-STAR COMFORTS

Beyond the basic star rating of home, other factors can make a big improvement in your overall comfort and energy costs including:

- Induction cooktops
- Keep the total size no larger than necessary;
- Efficient heating and cooling systems – split systems are often the best
- High-performance heat-pump hot-water systems
- Cellular blinds on all windows
- Clever use of exterior shade, such as deciduous vines on pergolas
- Avoid alfresco areas – they usually block too much light from living areas
- Roof design that makes it easy to install solar panels



REDUCING THE NUMBER OF ITEMS PENETRATING THE CEILING, SUCH AS LIGHTS, DUCTS AND SKYLIGHTS

CROSS-FLOW VENTILATION

EXTERIOR SHADE: VINES ON PERGOLAS

SMALL SOUTH & WEST-FACING WINDOWS

SOLAR PANELS

INCREASED LEVELS OF INSULATION

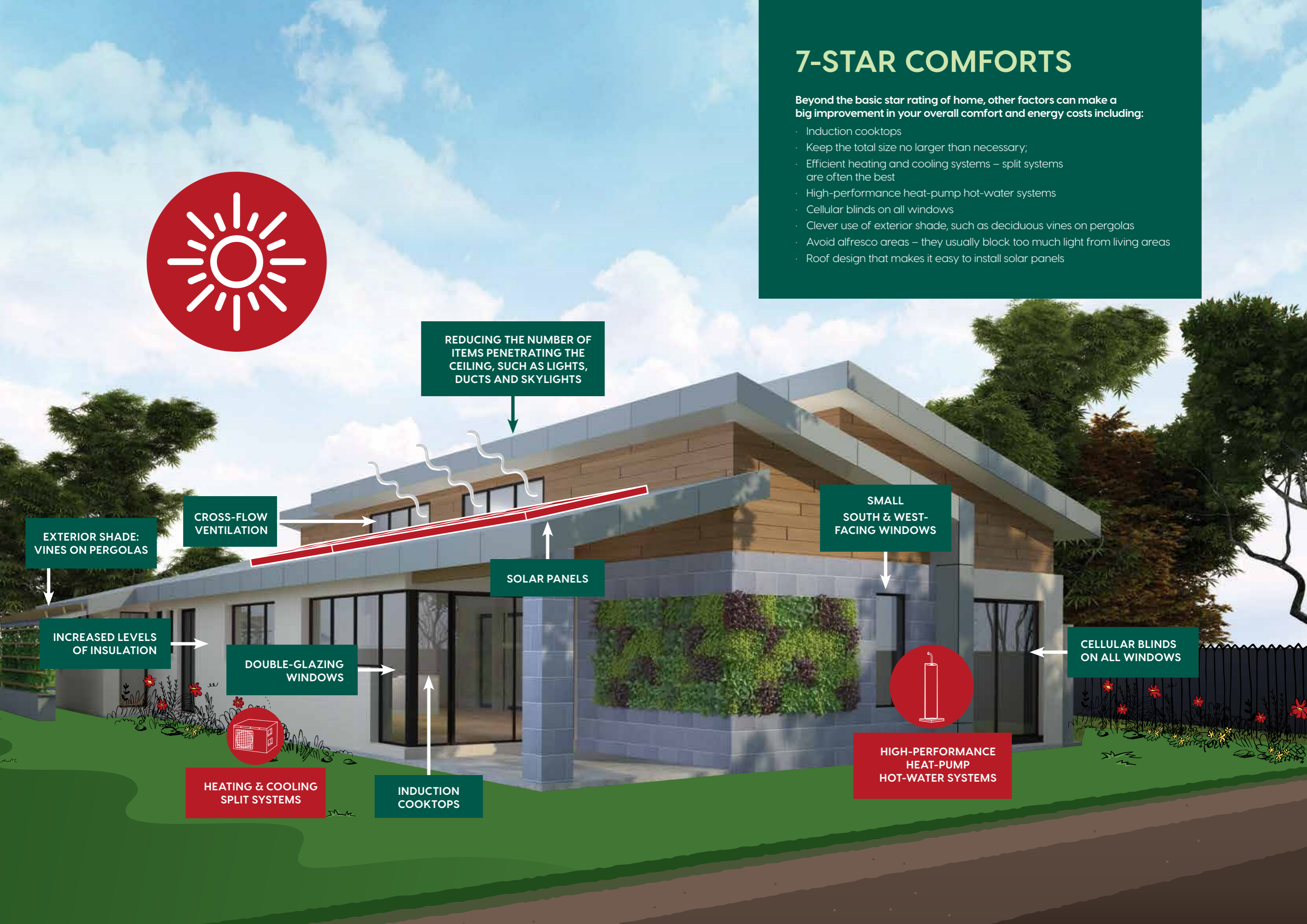
DOUBLE-GLAZING WINDOWS

CELLULAR BLINDS ON ALL WINDOWS

HEATING & COOLING SPLIT SYSTEMS

INDUCTION COOKTOPS

HIGH-PERFORMANCE HEAT-PUMP HOT-WATER SYSTEMS





ORIENTATION TO MAXIMISE LIGHT AND MINIMISE HOT SUMMER SUN

WHO CAN BUILD MY 7-STAR HOME?

At The Sanctuary, the choice is yours.

Select from a range of 7-star homes designed especially by leading builders available for The Sanctuary homesites.

Or, build with your choice of ecologically sustainable designers, architects, builders and energy specialists.

Whichever you prefer, you'll be enjoying a beautiful home with high standards of liveability and energy efficiency.



MAXIMUM COMFORT & MAXIMUM SAVINGS

Enjoy effortless year-round comfort... with your home designed to stay warmer in winter and cooler throughout summer's extremes.

Relax in peace and quiet... your home's insulation and window glazing improvements not only keep you more comfortable, they also block outside noise more effectively.

Turn expenses into enjoyment!... Every month you'll be paying less for water and electricity, creating savings for holidays, education, retirement and more.

In any sized, all-electric home with solar, these savings really add up!

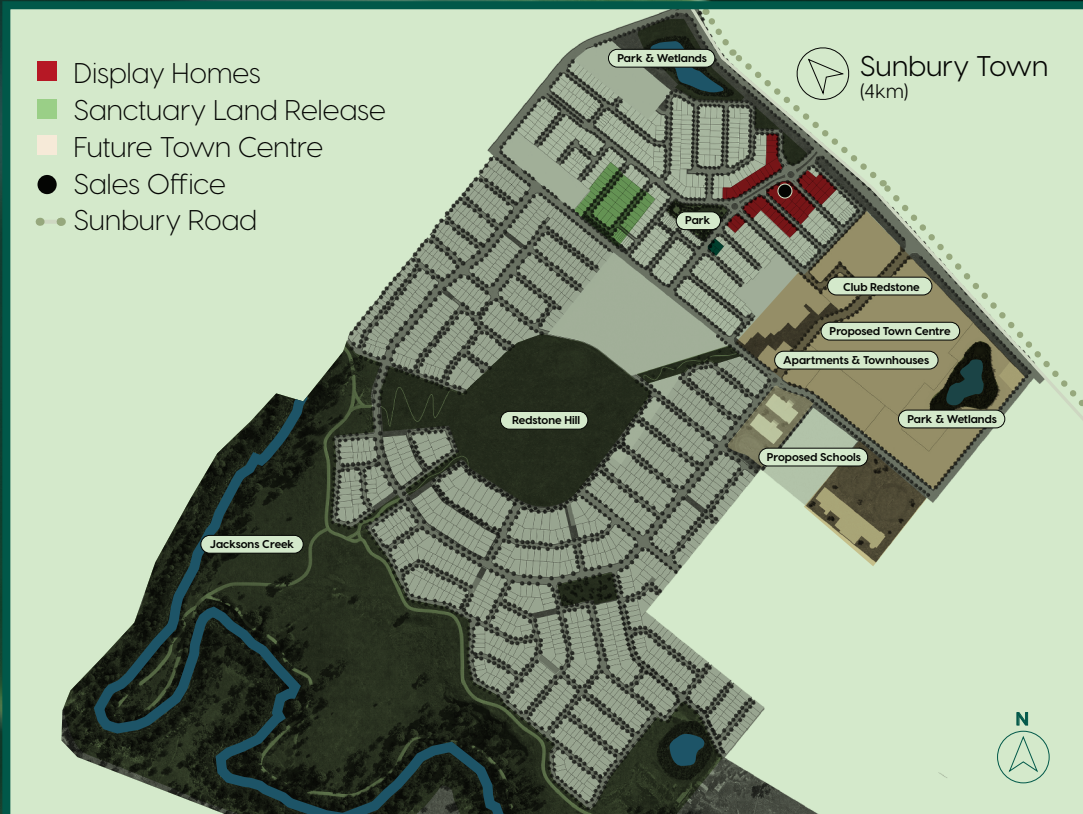


MINIMUM 5kW SOLAR



7-Star Advantages

- ✓ Year-on-year savings across gas, water & electricity
- ✓ All seasons comfort - warmer in winter, cooler in summer
- ✓ Improved air quality and health
- ✓ A quieter home
- ✓ The satisfaction of knowing you're contributing towards a more sustainable environment



Redstone.

redstone.land

9684 8136

Land Sales Office
675 Sunbury Road, Sunbury

SALES BY



DEVELOPED BY



*Energy savings as advised by Bristle Roofing. Potential bill reduction when you combine the required 3kW solar PV system with the bonus 5kWh battery. Saving calculations are based on the average energy use for a four person house in Victoria with electricity rates of 26.43c/kWh and export rates of 11c/kWh. Average sun hours after losses is assumed to be 3.8 and average number of cycles per day for battery is 17. Offer is for a limited time only and applicable to new Redstone purchasers as of 2 July 2021. *This is compared to the average household & without any rainwater or recycled water.