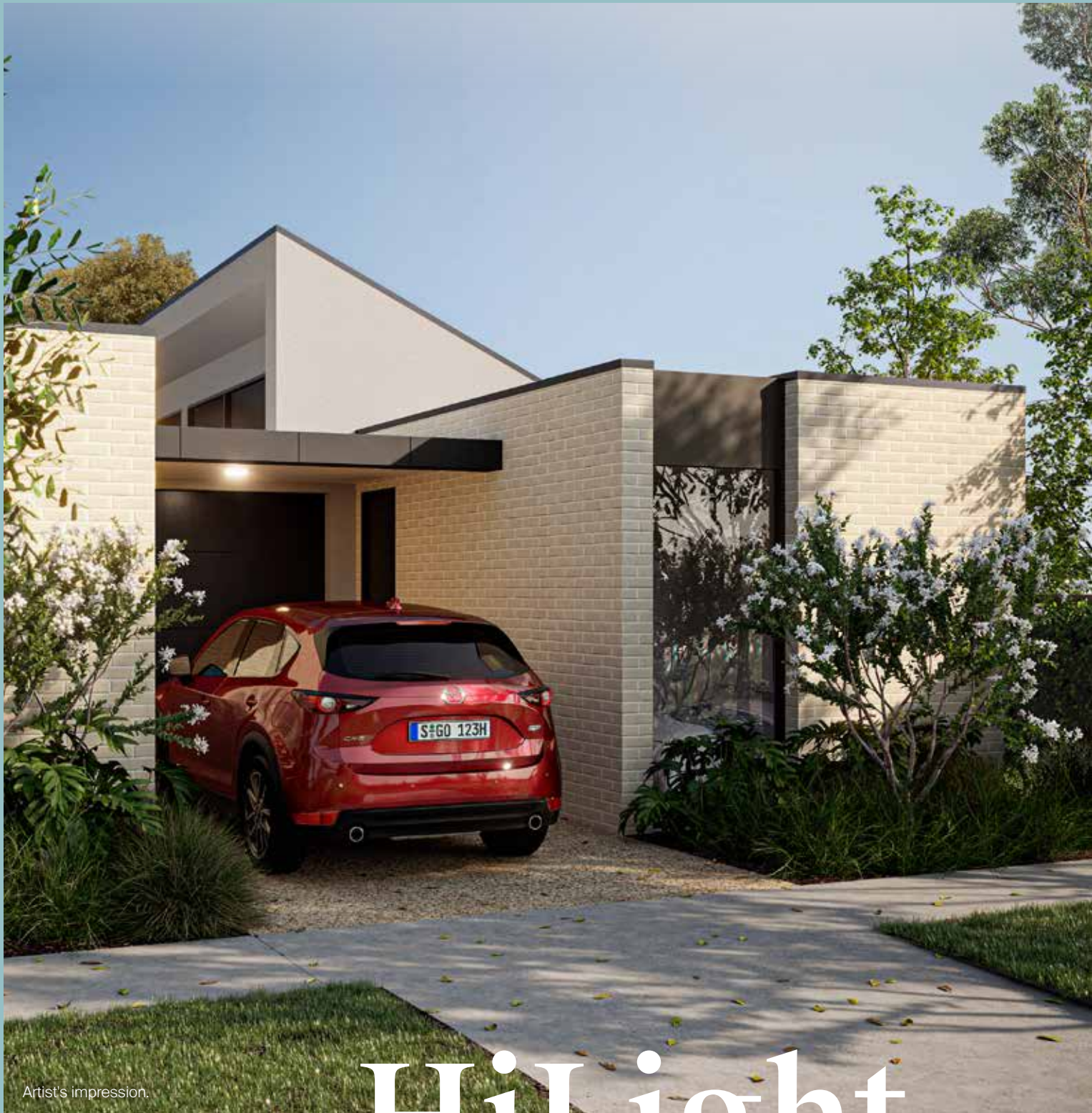


# VillaRange

BY VILLAWOOD  
PROPERTIES



Artist's impression.

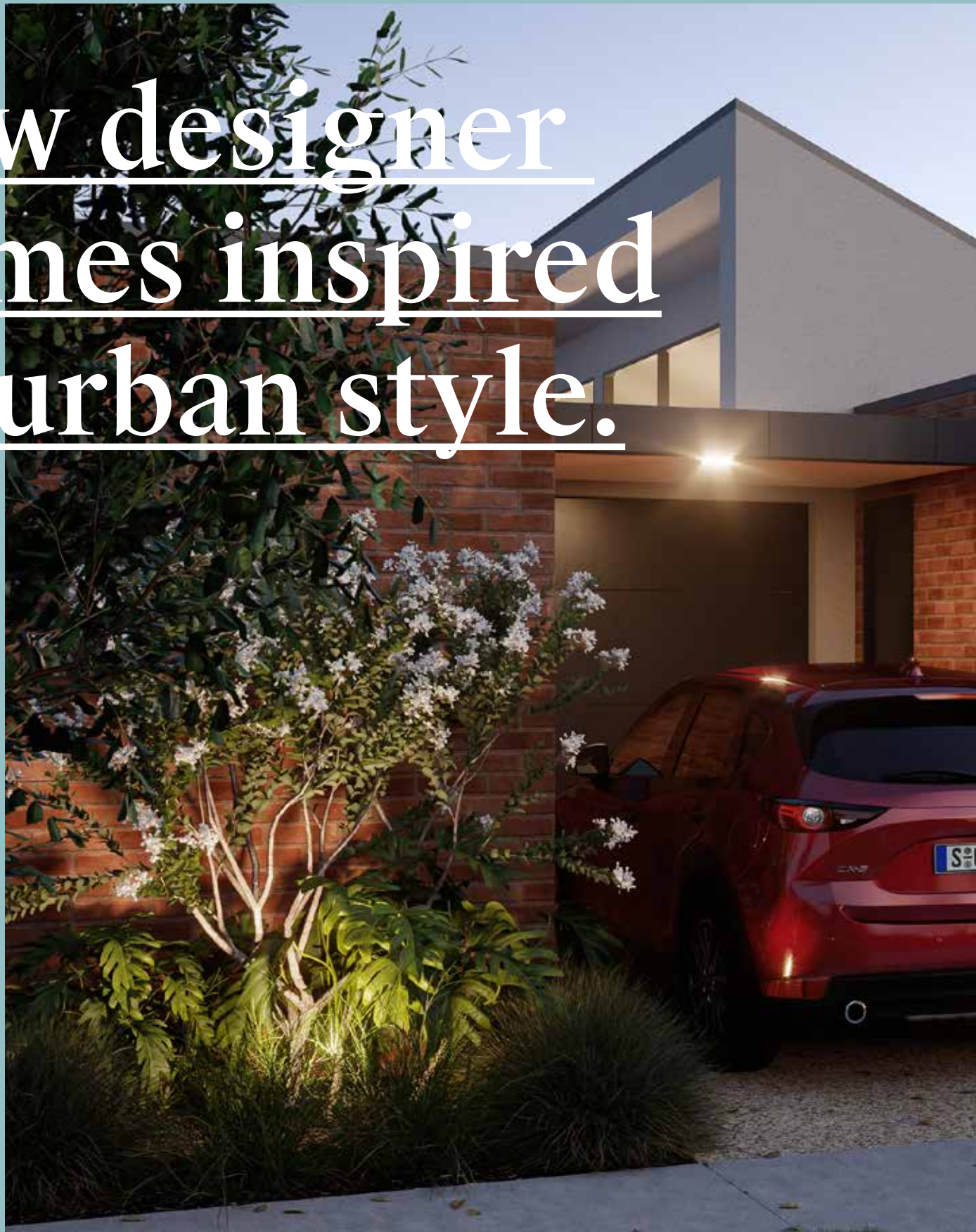
# HiLight.

VILLARANGE.COM.AU





# New designer homes inspired by urban style.

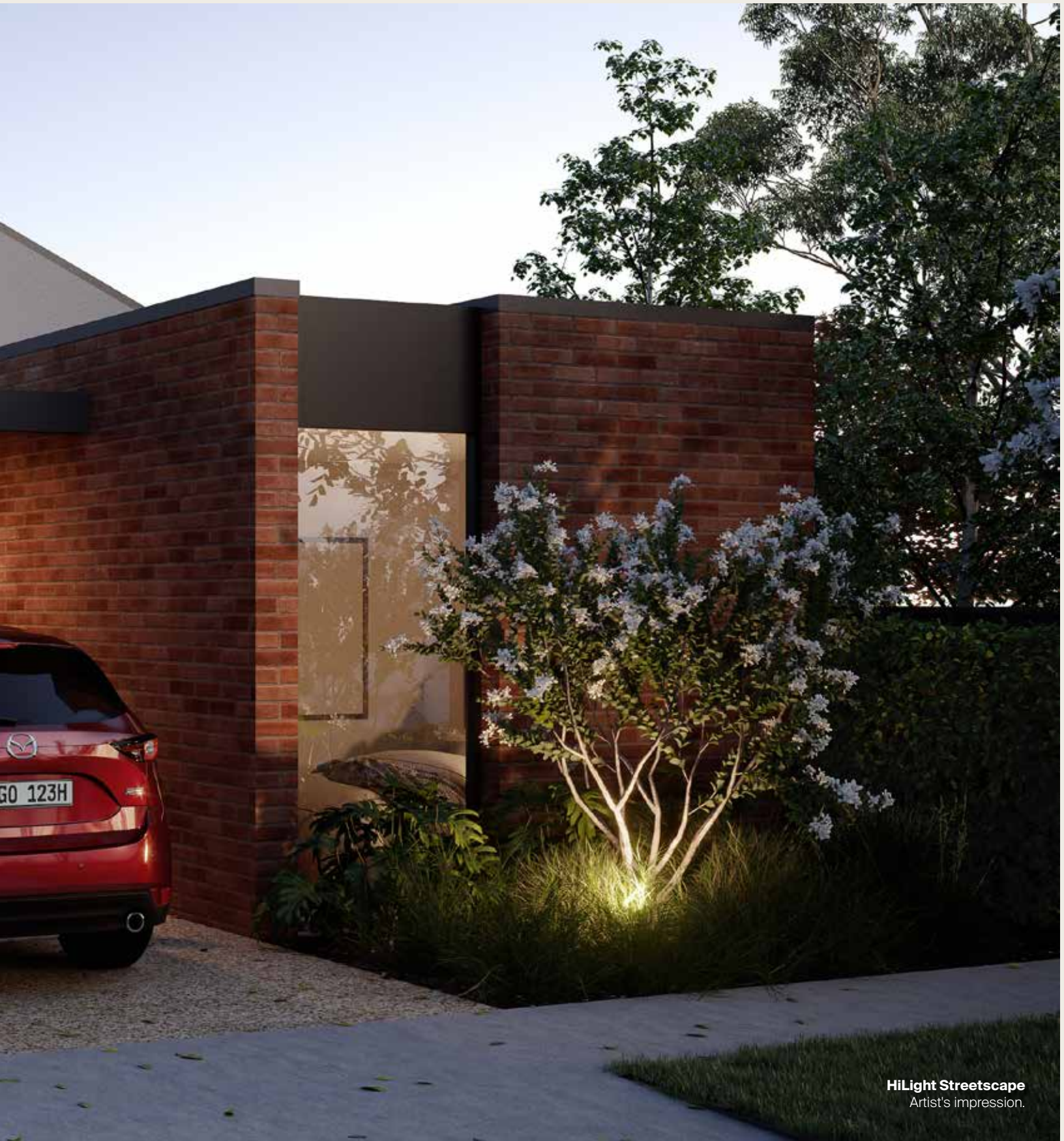


**Style without compromise. It's something we all deserve.  
And now it's within your reach.**

After three decades of building communities, Villawood have created their own range of brand-new designer homes. VillaRange is a selection of chic residences, designed in collaboration with future-thinking architects and inspired by urban style.

**Design, quality and value are at the core of Villawood's VillaRange.**





**HiLight Streetscape**  
Artist's impression.

Designer chic  
within your reach.



# Design beyond expectations.

**VillaRange is designed with every detail carefully considered to bring sustainable design, contemporary architecture and value for money thoughtfully to life.**

Living zones cleverly maximise space and natural light to create the ultimate contemporary residence. Stunning architectural façades blend seamlessly with leafy streetscapes to create striking street appeal.





VillaRange 'VillaLight' Scheme  
Artist's impression.

*"Our inspiration for the HiLight was for a minimalist, urban-inspired design, with streamlined open plan spaces. These intelligent homes are both beautiful and flexible - designed for adventurous spirits who want a low maintenance lifestyle."*

— Tony Vella, Rachcoff Vella Architecture and Interiors



**VillaRange 'VillaLight' Scheme**

Artist's impression. Floor to ceiling 3 door stacker, living window to slider and kitchen living bulkhead upgrade shown.

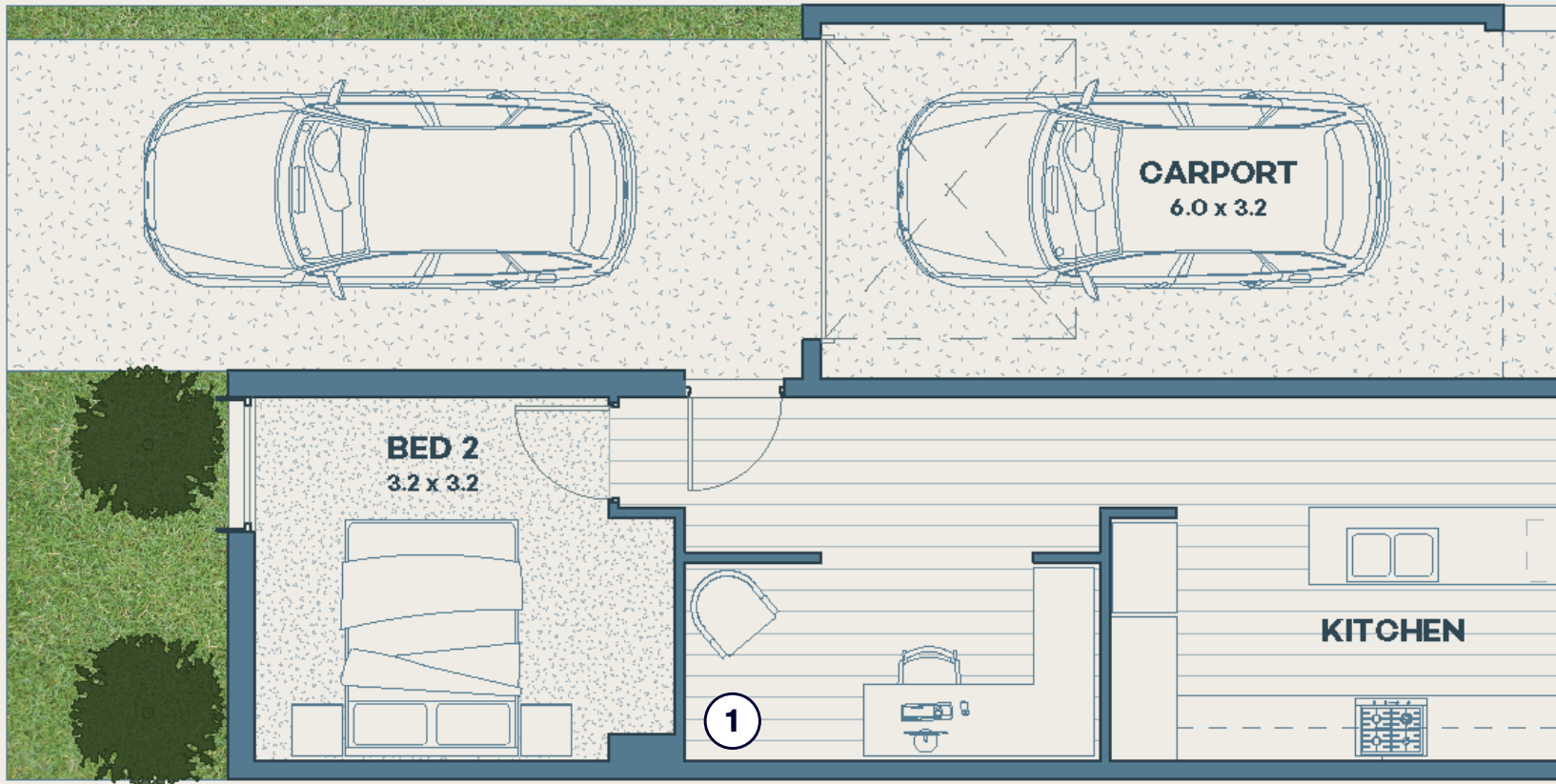


# Style meets substance.

**Villawood and Architects Rachcoff Vella have collaborated to create a range of unique, inspiring homes that combine sleek urban architecture with close proximity to exciting community and lifestyle amenities.**

The HiLight's minimalist architectural aesthetic features expansive internal spaces infused with warm northern natural light. Indoor-outdoor connections are seamless, with private outdoor spaces at the rear and a contemporary architectural streetscape out front. Quality, style and functionality are equally considered, making it an ideal abode for shared or solo living.

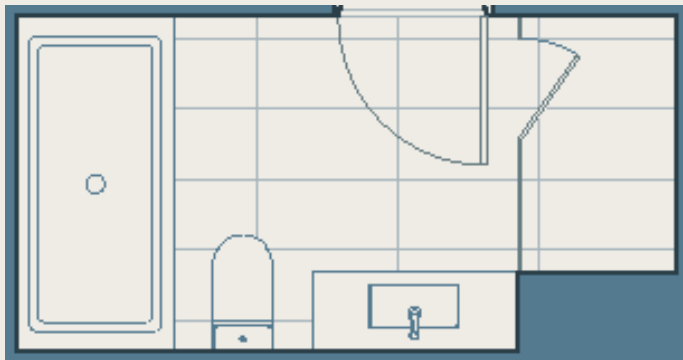




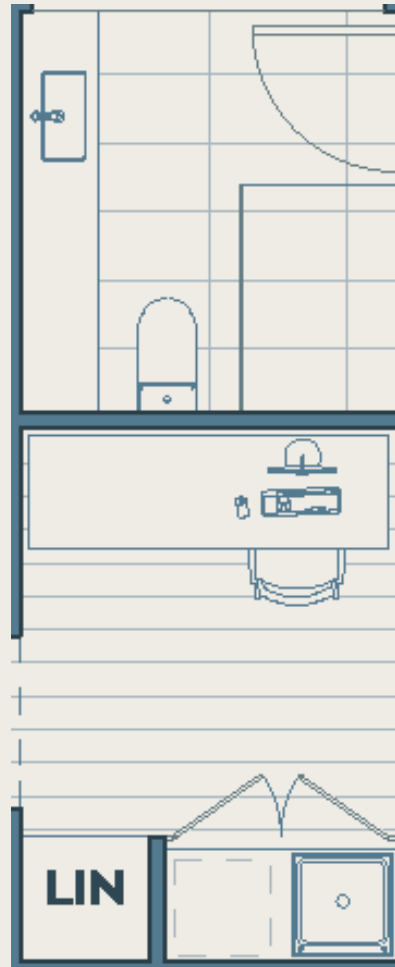
### Areas

Land Size	196 m <sup>2</sup>
Internal	113 m <sup>2</sup>
Carport	20 m <sup>2</sup>
<b>Total</b>	<b>133 m<sup>2</sup></b>

### 1 UPGRADE OPTION



### 2 UPGRADE OPTION







\*Standard floorplan.



# Key design features.

## Indoor space.

- Playful central zone functions as a shared living space, connecting to a north-facing courtyard.
- Generous internal and main living spaces achieved by intelligent spatial planning.
- Impressive large vertical, voluminous space with a raked ceiling and highlight windows in central living area.
- Two bedrooms situated at opposite ends of the house provide autonomy and a sense of privacy.

## Outdoor space.

- Stunning external façades with strong architectural aesthetic.
- Chic streetscapes with feature trees to welcome you home.
- Kitchen/dining space opens onto central north-facing courtyard for seamless indoor/outdoor living.
- Carport opens to extend living space and flow seamlessly into courtyard area.

# For the life you design.



Artist's impression.



## 'VillaLight' Scheme.

Light, fresh and natural. VillaLight embraces an airy palette with crisp whites and clean lines that bring life to the timber and interior finishes.



## 'VillaDawn' Scheme.

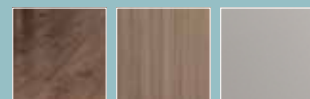
Warm and welcoming with a natural timber base. VillaDawn utilises timeless colours and textures that compliment the surrounding area.



Artist's impression.



Artist's impression.



## 'VillaDusk' Scheme.

An exciting clash of style and tone. VillaDusk welcomes a moody vibe with an on-trend, high-contrast environment.



# The team.



Villawood has grown to become one of Australia's most-trusted residential land developers. This reputation is the culmination of over 30 years experience and a proven track record in delivering innovative, community-focused developments.

From modest beginnings in 1989 developing small subdivisions in Bendigo, to the large scale masterplanned communities we deliver today, Villawood's commitment has and always will be to create vibrant communities where the people who live there form strong and lasting relationships.



At Rachcoff Vella, we manage an end-to-end process with experience and confidence; our long-term client relationships being testament to our careful balancing of design vision and commercial pragmatism.

Our design expertise, experience with commercial and residential property markets, and extensive knowledge of materials and construction techniques underpins our success as a practice. Ultimately, we seek built forms and interior spaces that function optimally for their end users, and that bring a level of tactile and visual pleasure that best captures ideal, lived experiences.

## Notes.

This image shows a single sheet of white paper with horizontal ruling lines. The lines are evenly spaced and run across the width of the page. There are no margins, text, or other markings on the paper.



**VILLARANGE.COM.AU**

**Disclaimer:** VillaRange homes are built to Villawood's plans by selected builders under licence from VillaRange Pty Ltd. Packages are available on selected lots only, within Villawood communities. Purchasers will sign a land purchase contract with the land owner and a build contract with the selected builder. Basic façades and floorplans are as shown in the brochure. All plans are subject to copyright, owned by VillaRange Pty Ltd. For consistency with surrounding properties, purchase is on condition that customisation of the exterior is not possible. Price varies depending on selections and extras; some fitout selections shown in illustrations are premium upgrades available at additional cost. Drawings are for illustrative purposes only; furniture, landscaping and appliances not listed in the brochure are not included. Included fittings, fixtures and appliances will be as listed in the brochure and confirmed in the build contract. All information in this brochure is accurate at the time of printing, February 2021. Description of planned streetscapes and Villawood community amenities are correct based on Villawood plans. Villawood reserves the right to amend or withdraw any advertised package without notice, in its absolute discretion. Location, orientation and views from specific lots should be verified by inspecting before purchase. For detailed information on the pricing and specifications of these homes, please contact the Villawood Community Sales Team. Prospective buyers should review the land and build contracts carefully, make their own inquiries and obtain independent advice before purchasing.