

# Delta 28BP

A family favourite now with even more choice



🛏️ 4 | 🚿 2 | 🚻 2 | 🚗 2

## A family favourite now with even more choice

Now available with a wide selection of flexible floorplans, the Delta has been cleverly designed for a growing family with its bedrooms located along one side of the home, providing an open plan layout with living areas on the other. The focal point of this unique home is the integrated living areas, complemented by a fabulous kitchen.

### Features

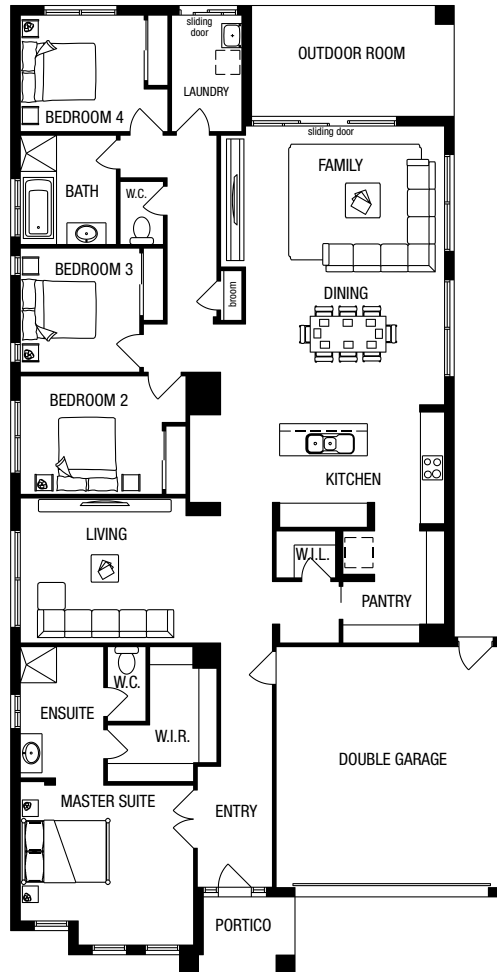
- Freedom inclusions
- 4 bedroom single storey home
- 10 floor plans to choose from
- 17 facades to choose from

\*Photographs on this web page may depict fixtures, finishes & features not supplied by Metricon such as landscaping and swimming pools. Accordingly any prices on our website don't include the supply of any of those items. Also, where our homes come in different floor plan sizes then the facades shown are generally based on the largest floor plan for that home, hence the façade may not be an accurate representation of all floorplan sizes. Accordingly the facades are a representation only and may include upgrades. For detailed home pricing and façade information, please speak to a New Home Advisor.

# DELTA 28BP

🛏️ 4 | 🚿 2 | 🚿 2 | 🚗 2

fits  
**14m**  
block width\*



## Home area

Total area	263.99m <sup>2</sup>
House area	209.28m <sup>2</sup>
Garage	36.14m <sup>2</sup>
Outdoor room	13.91m <sup>2</sup>
Portico	4.66m <sup>2</sup>

## Ground floor

Double garage	5.51 x 6.00m
Outdoor Room 1	5.04 x 2.76m
Living	5.00 x 3.61m
Family	4.95 x 7.18m
Master suite	4.31 x 3.98m
Bedroom 2	3.53 x 2.95m
Bedroom 3	2.97 x 3.09m
Bedroom 4	3.08 x 2.90m

## Other design options

At Metricon, we understand that information about structural and internal design options available for this home design and floor plan, please speak to your Metricon Sales Consultant.

\*Subject to orientation and fall of land and developer and council guidelines. Traditional floorplan shown.

1300 METRICON | [metricon.com.au](http://metricon.com.au)

