

# RATHDOWNE TOWNHOMES

URBAN PLACE  
COLLECTION 4.0

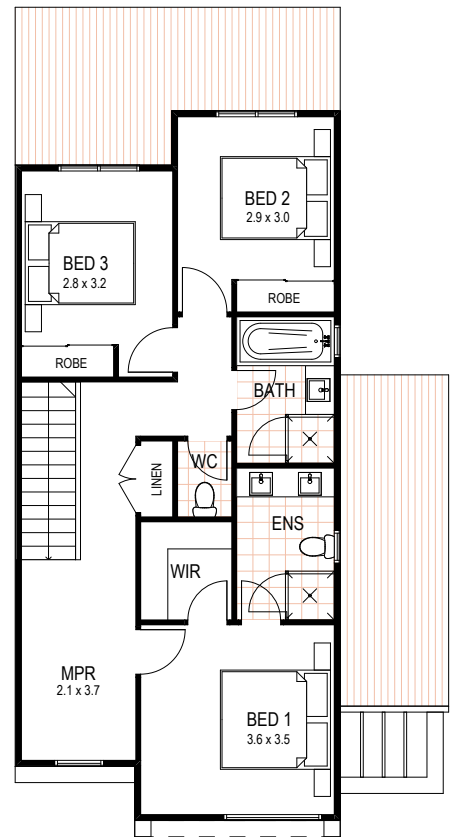
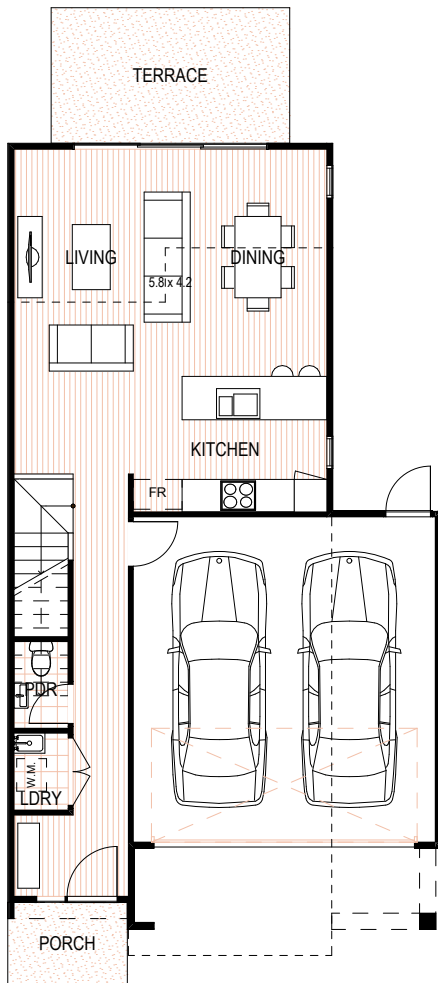


**SHAPE**  
homes



# IRONBARK END

 3
  2
  2



## IRONBARK END

Ground Floor	57.79m <sup>2</sup>	6.22sq
First Floor	70.10m <sup>2</sup>	7.55sq
Garage	34.92m <sup>2</sup>	3.76sq
<b>TOTAL AREA</b>	<b>162.81m<sup>2</sup></b>	<b>17.52sq</b>

All images and drawings are illustrative only and may not be to scale. Floor plans are subject to change to comply with authority approval. Illustrations and information are intended to be indicative only and are believed to be correct at the time of publication. Shape Homes reserves the right to withdraw or alter at any time.

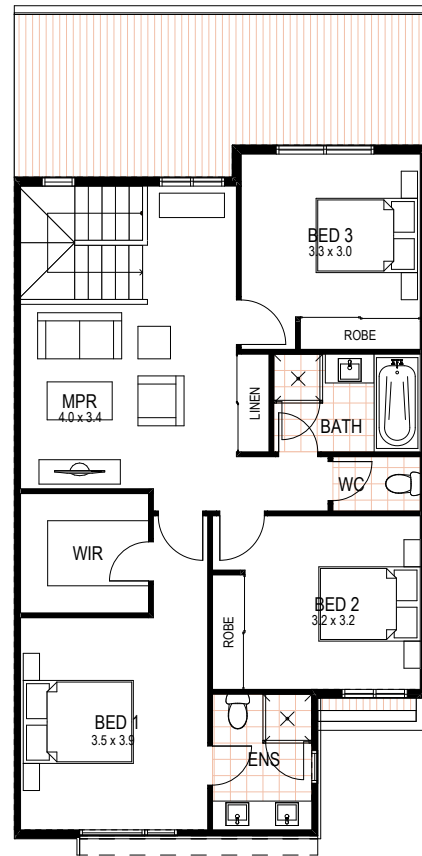
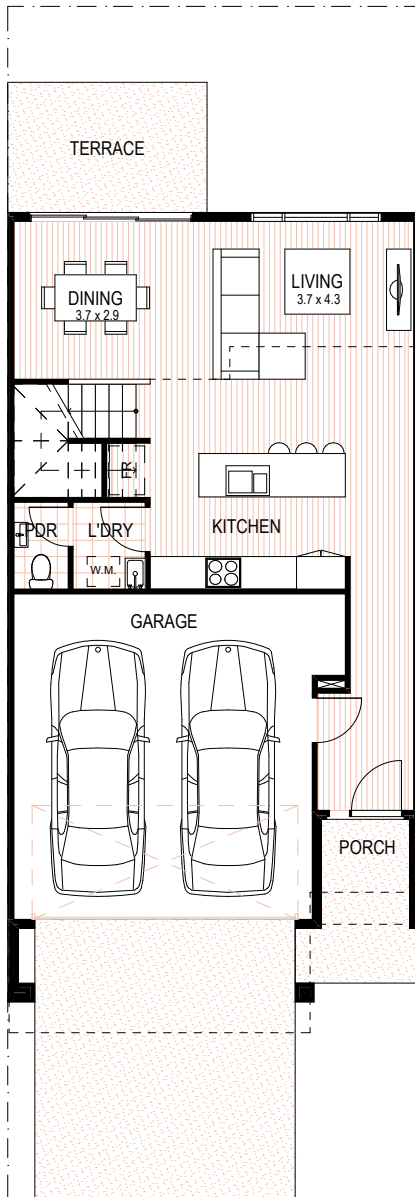


NORTH



# EUCALYPTUS (B)

 3
  2
  2



## EUCALYPTUS (TYPE B)

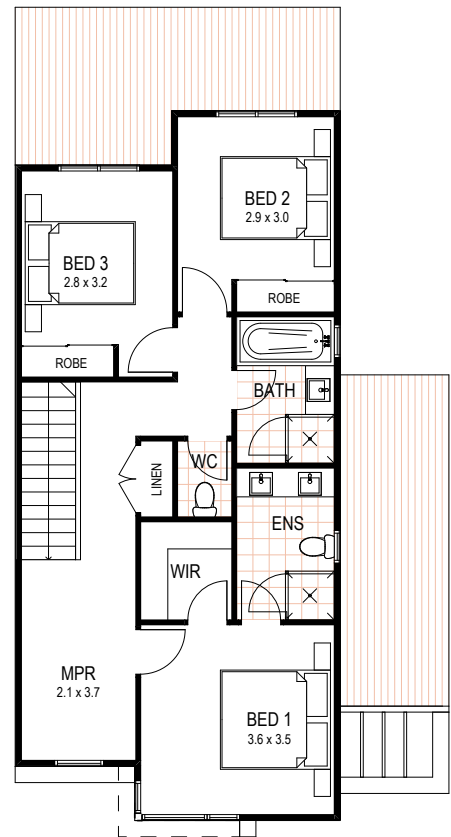
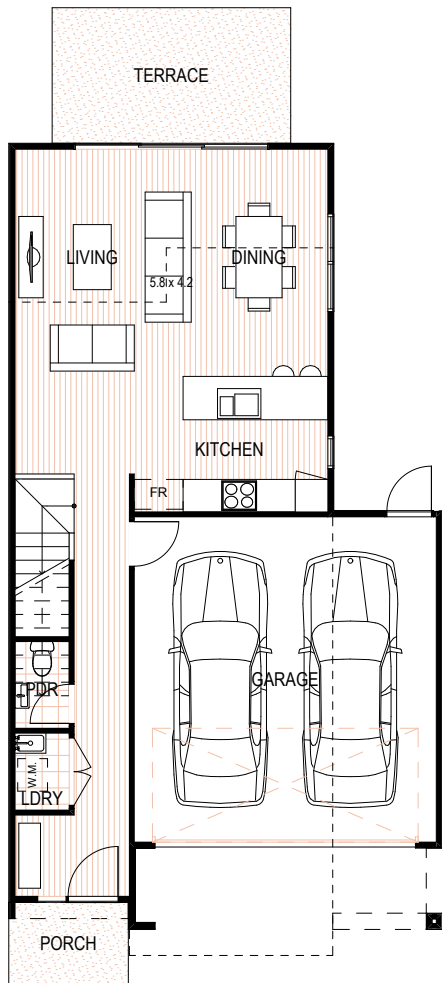
Ground Floor	61m <sup>2</sup>	6.57sq
First Floor	85m <sup>2</sup>	9.15sq
Garage	36m <sup>2</sup>	3.88sq
Balcony	3m <sup>2</sup>	0.32sq
<b>TOTAL AREA</b>	<b>185m<sup>2</sup></b>	<b>19.91sq</b>

All images and drawings are illustrative only and may not be to scale. Floor plans are subject to change to comply with authority approval. Illustrations and information are intended to be indicative only and are believed to be correct at the time of publication. Shape Homes reserves the right to withdraw or alter at any time.



# IRONBARK

 3
  2
  2



## IRONBARK

Ground Floor	57.79m <sup>2</sup>	6.22sq
First Floor	70.10m <sup>2</sup>	7.55sq
Garage	34.96m <sup>2</sup>	3.76sq
<b>TOTAL AREA</b>	<b>162.85m<sup>2</sup></b>	<b>17.53sq</b>

All images and drawings are illustrative only and may not be to scale. Floor plans are subject to change to comply with authority approval. Illustrations and information are intended to be indicative only and are believed to be correct at the time of publication. Shape Homes reserves the right to withdraw or alter at any time.



NORTH



# RATHDOWNE TOWNHOMES

URBAN PLACE  
COLLECTION 4.0

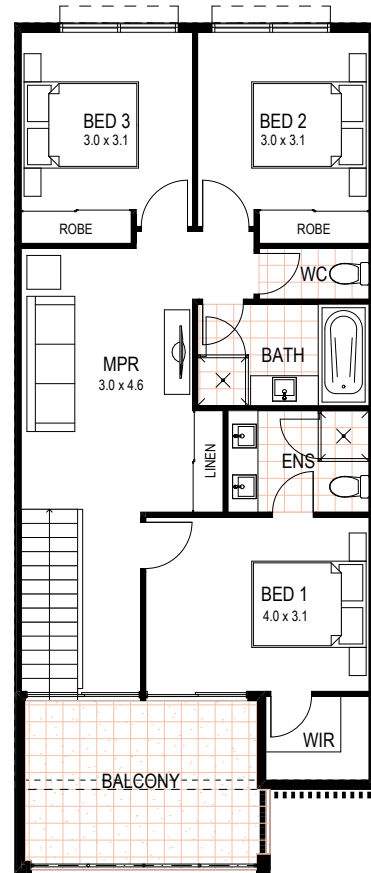
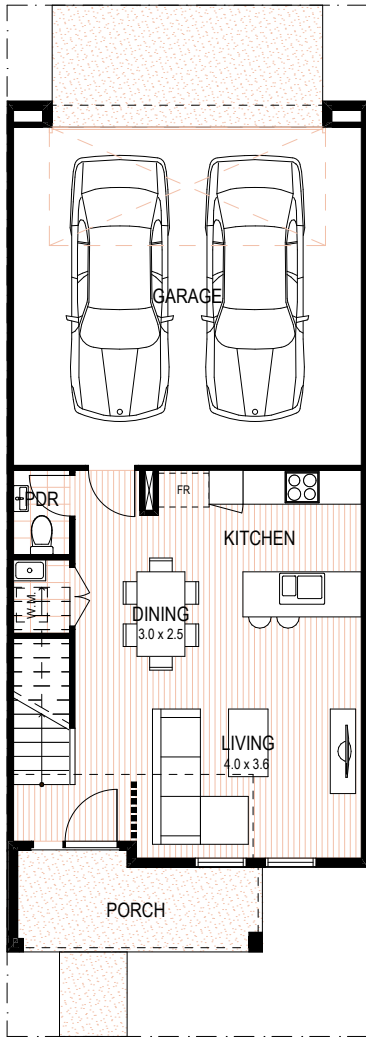


SHAPE  
homes



# KAURI

 3
  2
  2



## KAURI

Ground Floor	44m <sup>2</sup>	4.74sq
First Floor	77m <sup>2</sup>	8.29sq
Garage	41m <sup>2</sup>	4.41sq
Porch	7m <sup>2</sup>	0.75sq
Balcony	13m <sup>2</sup>	1.40sq
<b>TOTAL AREA</b>	<b>182m<sup>2</sup></b>	<b>19.59sq</b>

All images and drawings are illustrative only and may not be to scale. Floor plans are subject to change to comply with authority approval. Illustrations and information are intended to be indicative only and are believed to be correct at the time of publication. Shape Homes reserves the right to withdraw or alter at any time.

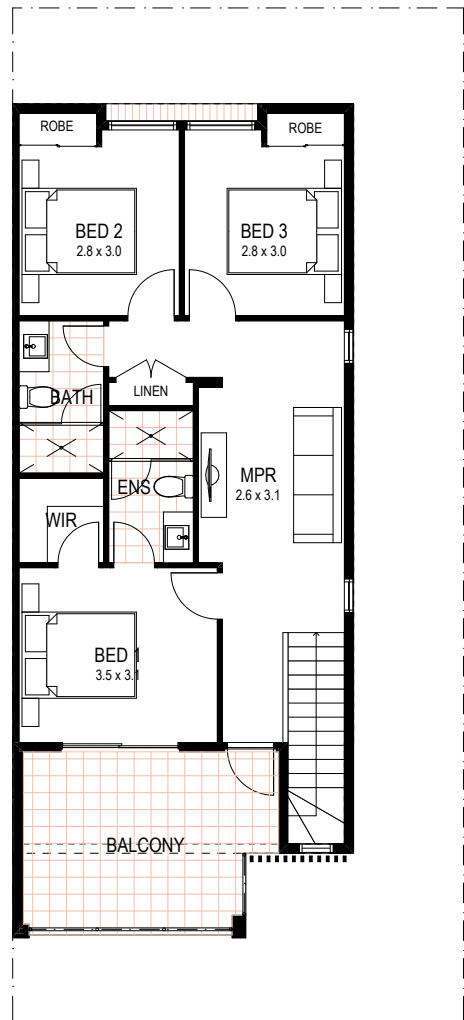
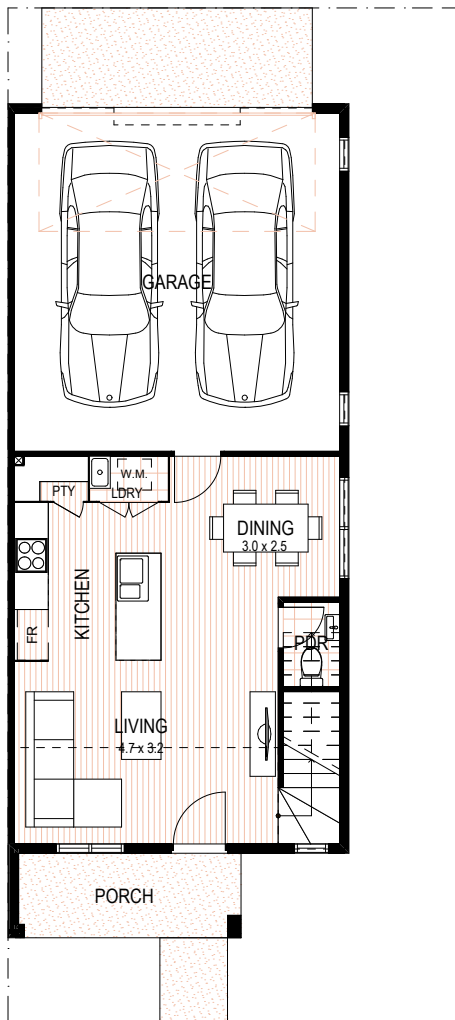


NORTH



# CORDYLINE

 3
  2
  2



## CORDYLINE

Ground Floor	43m <sup>2</sup>	4.63sq
First Floor	67m <sup>2</sup>	7.21sq
Garage	37m <sup>2</sup>	3.98sq
Porch	6m <sup>2</sup>	0.65sq
Balcony	15m <sup>2</sup>	1.61sq
<b>TOTAL AREA</b>	<b>168m<sup>2</sup></b>	<b>18.08sq</b>

All images and drawings are illustrative only and may not be to scale. Floor plans are subject to change to comply with authority approval. Illustrations and information are intended to be indicative only and are believed to be correct at the time of publication. Shape Homes reserves the right to withdraw or alter at any time.

