

**\* House and Land:- \$738,299**  
**Lot 2, Lonicera Estate, Woodend**



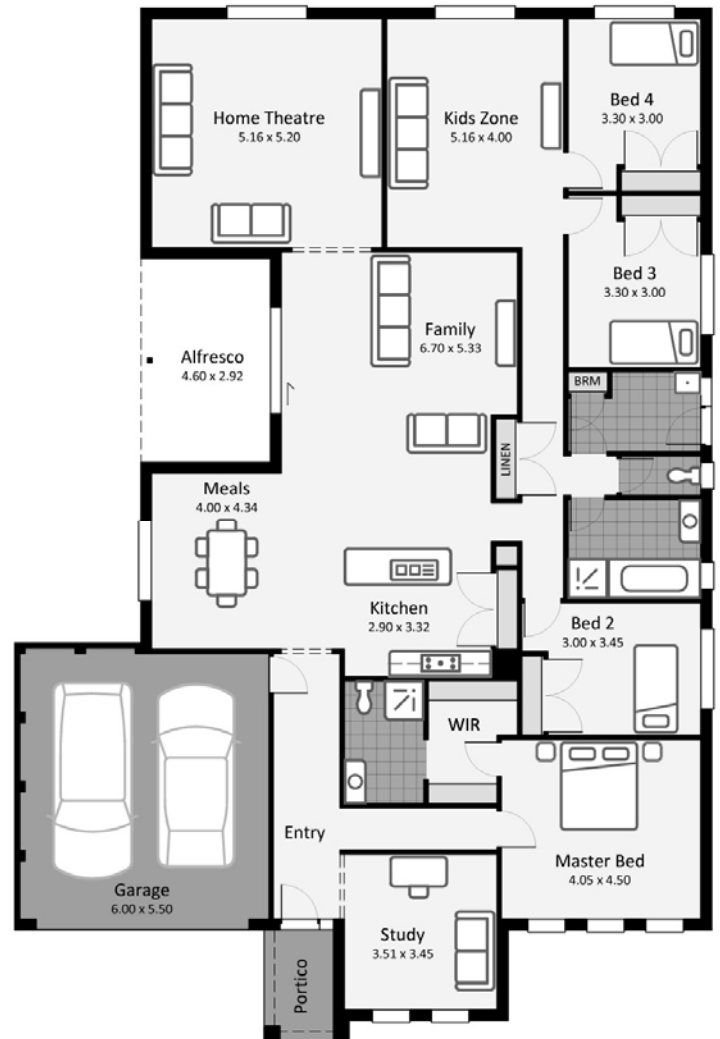
**\* FREE Custom Design Service**  
Complete redesign or changes, available for all floor plans and facades, fully tailored to your requirements.

## SEATTLE 248

4 2 2 32.07sq 1307m2

### \* Package Inclusions :

- ⇒ Site Costs
- ⇒ Colorbond Roof (not shown in pic)
- ⇒ Double Glazing Throughout
- ⇒ 2550mm Ceilings
- ⇒ 5000 Litre Water Tank
- ⇒ 3Kw 10 Solar Panel System
- ⇒ European Stainless-Steel Appliances
- ⇒ Tiled Shower Bases
- ⇒ Quality Floor Coverings Throughout
- ⇒ Ducted Heating
- ⇒ Evaporative Cooling
- ⇒ **and much more**



**CONTACT US NOW!**

**Phone: Norm Glenn 0419 556 783**

[normg@holbrooksales.com.au](mailto:normg@holbrooksales.com.au)  
[www.holbrooksales.com.au](http://www.holbrooksales.com.au)



\* Terms and Conditions apply. Façade shown is for illustration purposes only. All pricing is estimated until plan amendments have been confirmed, full engineering is available and final approval of land developer in relationship to any MCP, building guidelines and covenant requirements.