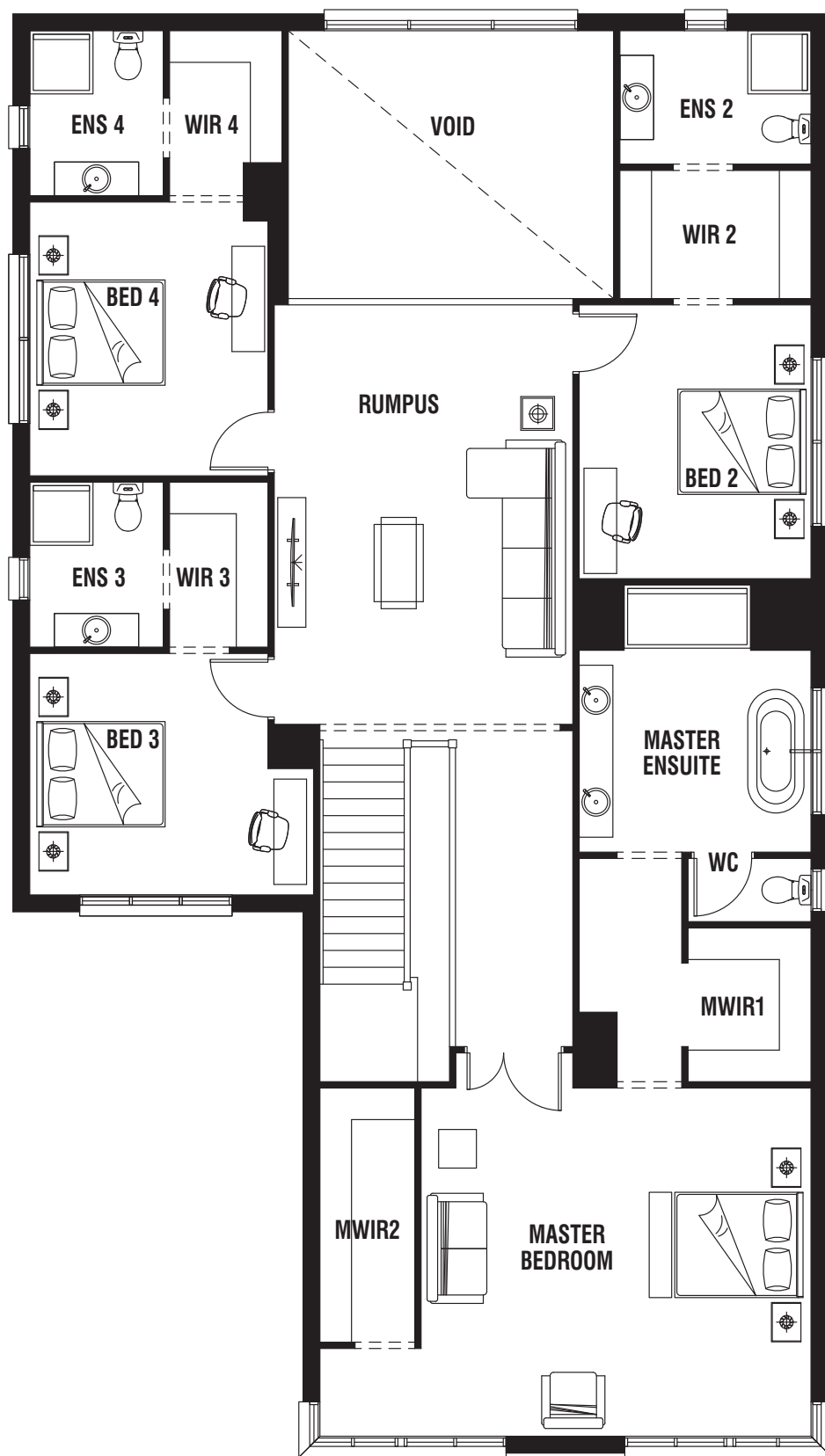


This floor plan illustrates a large, multi-room residence. The layout includes a Theatre room with a long sofa and a fireplace, a Family room with a fireplace and two armchairs, and a Dining room with a large rectangular table and chairs. The Kitchen area features a long table labeled 'MEALS', a sink, and a stove. An Alfresco area is located outside the Kitchen. The Lounge area has two sofas and a fireplace. The Study room contains a desk and a chair. The Garage is a two-car space. The Entry Hall provides access to the Entry, Mud, and Store rooms. The Mud room leads to the PDR (Private Dressing Room) and the WIL (Wardrobe). The LDRY (Laundry) room is also shown. The Porch is located at the front of the property.

Rooms and Features:

- THEATRE:** Features a long sofa and a fireplace.
- FAMILY:** Features a fireplace and two armchairs.
- DINING:** Features a large rectangular table and chairs.
- KITCHEN:** Features a long table labeled 'MEALS', a sink, and a stove.
- ALFRESCO:** Outdoor area adjacent to the Kitchen.
- LDRY:** Laundry room.
- WIL:** Wardrobe.
- PDR:** Private Dressing Room.
- MUD:** Mudroom.
- STORE:** Storage room.
- ENTRY HALL:** Central hallway with stairs leading up and down.
- ENTRY:** Front entrance.
- PORCH:** Front porch.
- LOUNGE:** Features two sofas and a fireplace.
- STUDY:** Features a desk and a chair.
- GARAGE:** Two-car garage.
- DRY PTY:** Drying Partition.
- GALLEY:** Kitchen extension.



Room Sizes				Specifications			Available Sizes
Master Bedroom	5.0 x 5.6m	Dining	4.7 x 2.5m	Ground Floor	187.83m ²	20.22sq	Astor 49
Bedroom 2	3.9 x 3.3m	Lounge	4.2 x 3.8m	First Floor	205.96m ²	22.17sq	
Bedroom 3	3.4 x 3.4m	Theatre	5.9 x 3.6m	Garage	36.68m ²	3.95sq	
Bedroom 4	3.9 x 3.4m	Rumpus	6.0 x 4.3m	Alfresco	13.88m ²	1.49sq	
Family	4.4 x 4.6m	Study	3.2 x 3.8m	Porch	6.57m ²	0.71sq	
				Total	450.92m²	48.54sq*	

- Alternative Master Ensuite
- Drying Room Option
- Extended Lounge Option
- Extended Theatre Option
- Guest Bed Option
- Open Study/Lounge Option

- Shower to Powder Option
- Store Cupboard Option
- Upper Bath Option
- Upper Linen Option