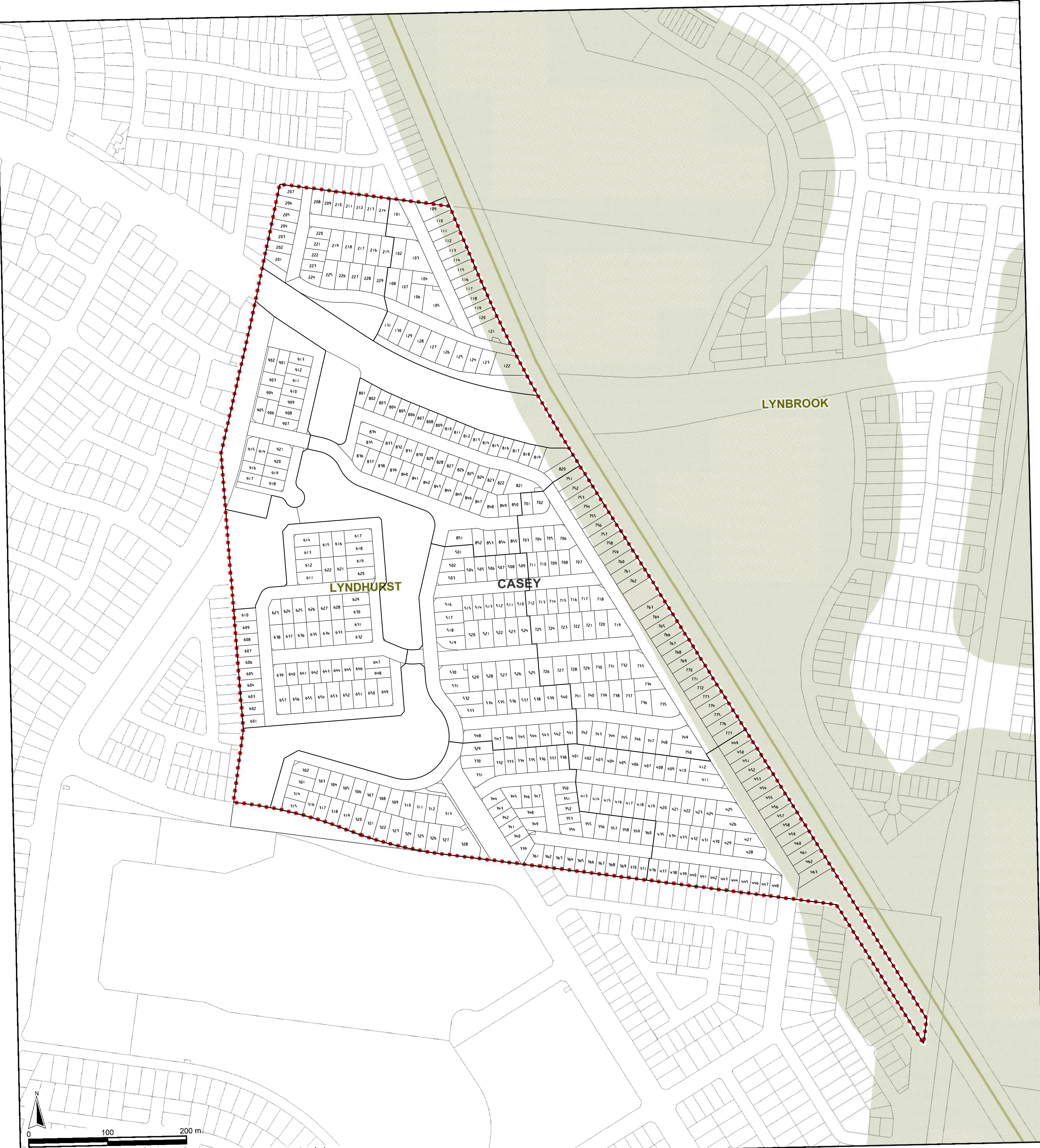


Planning Map
BMO mapping



Copyright © State Government of Victoria. Service provided by www.land.vic.gov.au

Legend

WARRNAMBOOL	Major Town	ZONES	ACZ - Activity Centre	PCRZ - Public Conservation & Resource	OVERLAYS	AEO - Airport Environs	LSIO - Land Subject to Inundation
BOURKE STREET	Major Road, Road	B1Z - Commercial 1	B12 - Commercial 1	PDZ - Priority Development	BMO - Bushfire Management	MAE01 - Melbourne Airport Environs 1	MAE02 - Melbourne Airport Environs 2
	Road name	B2Z - Commercial 2	B3Z - Commercial 2	FRPZ - Public Park & Recreation	CLPO - City Link Project	NCD - Neighbourhood Character	PO - Parking
	Railway, Tramway	B4Z - Commercial 2	B5Z - Commercial 2	PUZ1 - Public Use - Service & Utility	DCPO - Development Contributions Plan	PAD - Public Acquisition	RD - Road Closure
	Property/Parcel, Selected	B6Z - Commercial 1	C1Z - Commercial 1	PUZ2 - Public Use - Education	DDO - Design & Development	RCD - Road Closure	SBD - Special Building
	Address, Lot, Crown allotment	C2Z - Commercial 2	CA - Commonwealth Land	PUZ3 - Public Use - Health Community	DDOBT - Design & Development Part	SLO - Significant Landscape	SMD - Salinity Management
	River, Stream, Coastline	CCZ - Capital City	CDZ - Comprehensive Development	PUZ4 - Public Use - Transport	DPO - Development Plan	SRO - State Resource	VPO - Vegetation Protection
	Waterbody	DZ - Dockland	ERZ - Environmental Rural	PUZ5 - Public Use - Cemetery/Crematorium	EAO - Environmental Audit		
	Locality	FZ - Farming	GRZ - General Residential	PUZ6 - Public Use - Local Government	EMO - Erosion Management		
SEDFORD	Locality Name	GWAZ - Green Wedge A	GWZ - Green Wedge	PUZ7 - Public Use - Other Public Use	ESO - Environmental Significance		
BRIMBANK	Local Government Area	IN1Z - Industrial 1	IN2Z - Industrial 2	PZ - Port	FO - Floodway		
	Local Government Name	IN3Z - Industrial 3	LDRZ - Low Density Residential	R1Z - General Residential	HO - Heritage		
	Urban Growth Boundary (UGB)	NRZ - Neighbourhood Residential	MUZ - Mixed Use	R2Z - General Residential	ICPO - Infrastructure Contributions Plan		
	Area outside the UGB		NRZ - Neighbourhood Residential	R3Z - General Residential	IPO - Incorporated Plan		
	Investigation Area			RAZ - Rural Activity			
	Land added to UGB since 2005			RACZ - Rural Conservation			
	Boundary of Searched Suburb			RDZ1 - Road - Category 1			
				RDZ2 - Road - Category 2			
				RIZ - Residential Growth			
				RIZ - Rural Living			
				RIZ - Rural			
				SUZ - Special Use			
				TZ - Township			
				UFZ - Urban Floodway			
				UGZ - Urban Growth			

Disclaimer: This map is a snapshot generated from Victorian Government data. This material may be of assistance to you but the State of Victoria does not guarantee that the publication is without flaw of any kind or is wholly appropriate for your particular purposes and therefore disclaims all liability for error, loss or damage which may arise from reliance upon it. All persons accessing this information should make appropriate enquiries to assess the currency of data.