

- Notes:**
- Final areas are subject to design changes, Council approval and field survey and may differ from those shown on this Disclosure Plan.
 - Final presentation of areas will comply with requirements of the Registrar of Titles and may vary from the format on this Disclosure Plan
 - The Seller, under the Contract Terms, is entitled to make Variations to the lot, including its location, area, size, dimensions, and elevation. Without limitation, if the area of the Lot on the Plan is not more than 5% different to the total area of the Lot as shown on this Disclosure Plan, the Variation is deemed to be a Permitted Variation and the Buyer cannot object.
 - Design contours are approximate only and may change during construction
 - Services have been plotted from design information only and may change during construction
 - All earthworks fill to lots has been placed and compacted on Level 1 basis in accordance with Australian Standard AS3798-2007 "Guidelines on earthworks for commercial and residential developments".

LEGEND

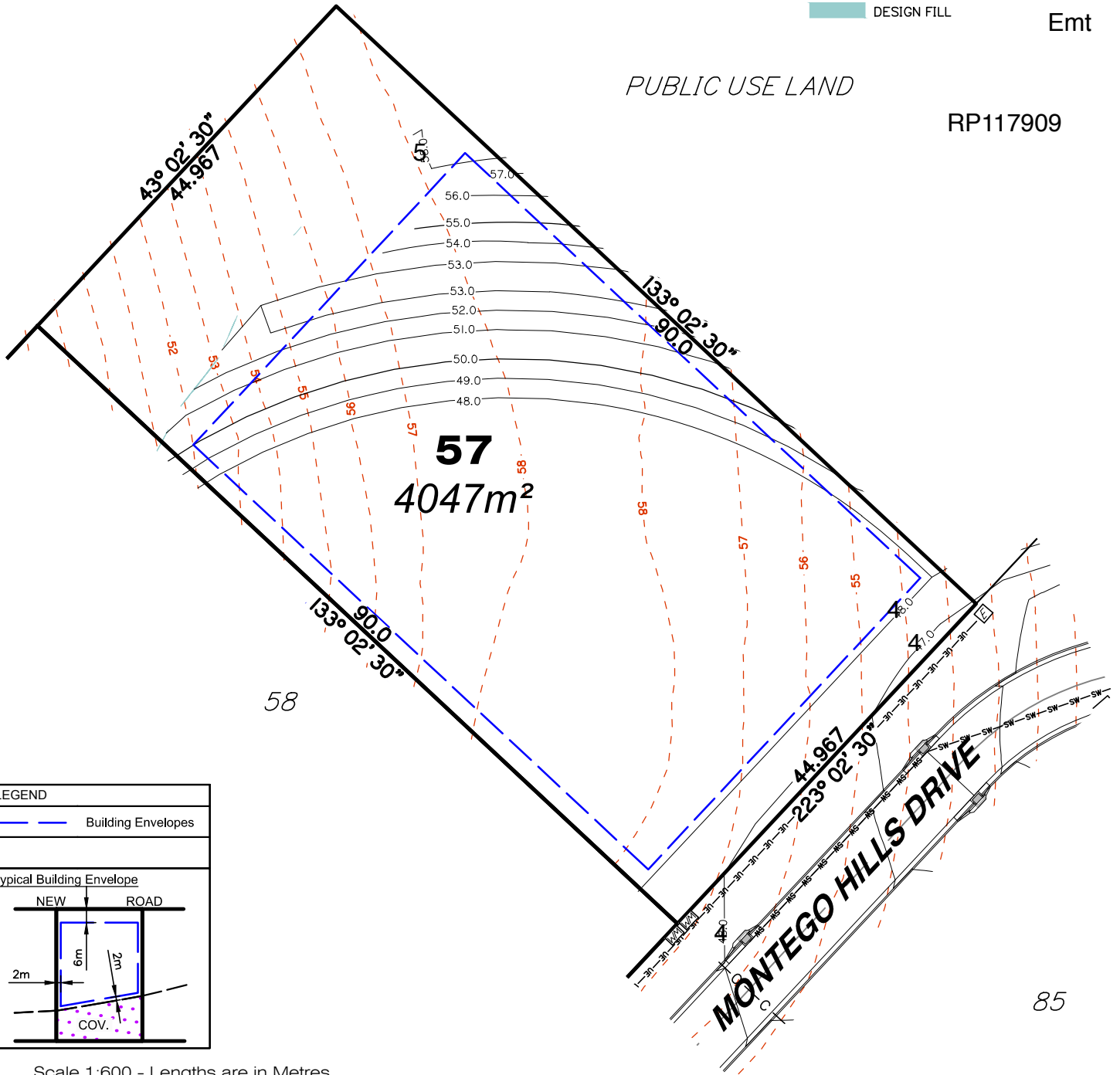
- SW-SW- STORMWATER PIPE
- >->- STORMWATER SWALES
- ⊕ STORMWATER MANHOLE
- ⊞ STORMWATER GULLY PIT
- GULLY TRAP
- HEADWALL
- WATER METER
- W-W- WATER PIPE
- C-C- WATER CONDUIT
- ELECTRICITY PILLAR
- LIGHT POLE
- UE-UE- UNDERGROUND ELECTRICITY
- 4I-4I- EXISTING SURFACE CONTOURS
- 4I-4I- DESIGN CONTOURS
- DESIGN FILL



Emt

PUBLIC USE LAND

RP117909

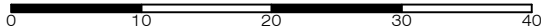


LEGEND

- Building Envelopes

Typical Building Envelope

Scale 1:600 - Lengths are in Metres.



gassman development perspectives

est 1985

planning | environment | landscape | engineering | survey

T: 3807 3333 | F: 3287 5461 | www.gassman.com.au

Gold Coast & Logan | 76 Business Street, Yatala QLD | PO Box 392, Beenleigh 4207

Client **Kingsholme Developments Pty. Ltd.**

Project **DISCLOSURE PLAN**
LOT 57
MONTEGO HILLS
(Survey plan: SP264750)
97, 105 Upper Ormeau Road, Kingsholme

Real Property Description:
Lot 951 on SP264738

Parish of	Pimpama	Issue Date	27/09/2016
County of	Ward	Meridian	SP264738
Local Govt	GOLD COAST CITY COUNCIL	Level Datum	AHD
		Contour Interval	1.0m
Scale (on A4 original)	1:600	Drawn	R. McGroary
		Date Drafted	10/08/2016
		Checked	T. Geraghty
REFERENCE No.	5543-14		
PLAN No.	5543 S DC LOT 57 A		

85

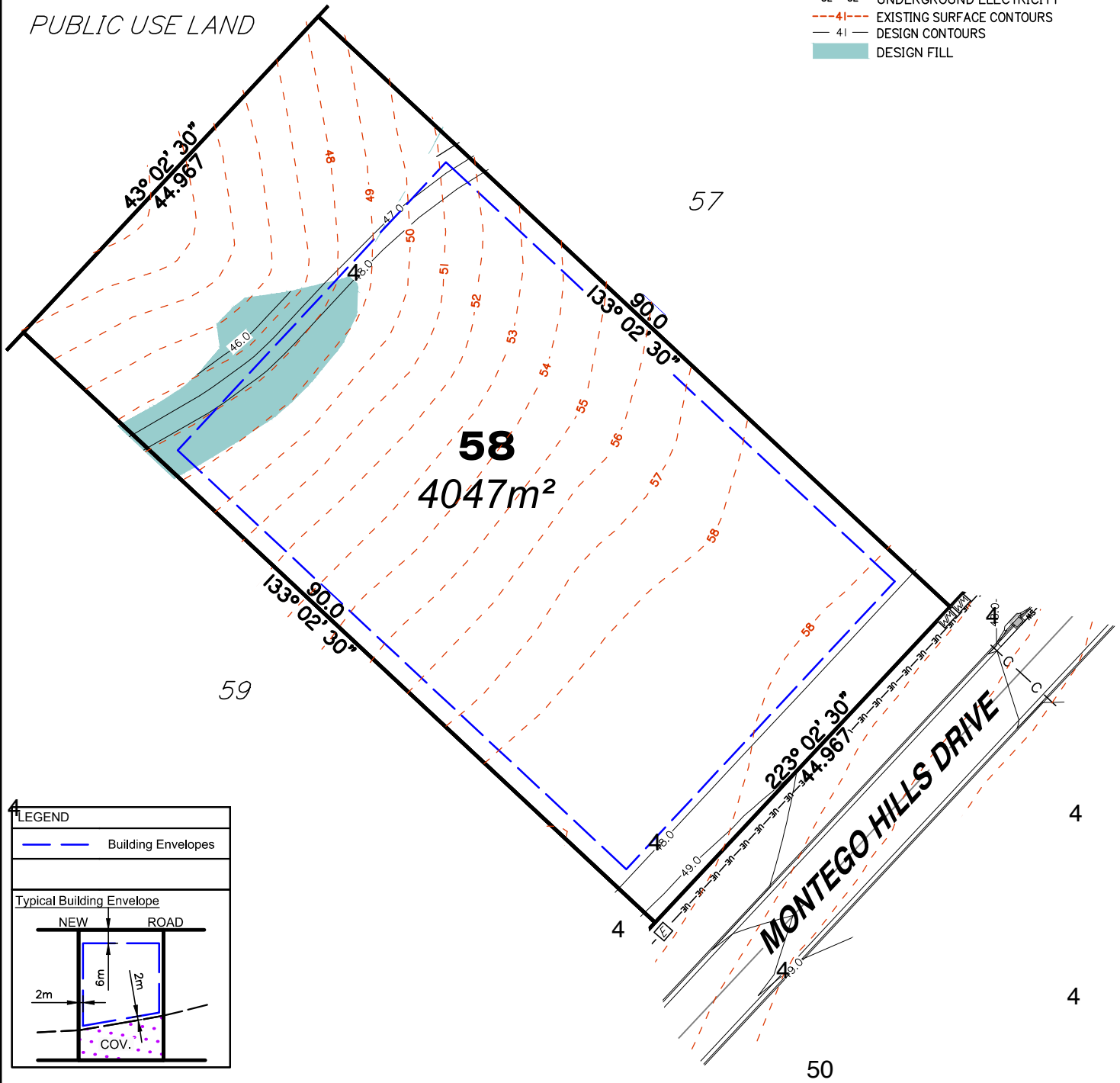
- Notes:**
- Final areas are subject to design changes, Council approval and field survey and may differ from those shown on this Disclosure Plan.
 - Final presentation of areas will comply with requirements of the Registrar of Titles and may vary from the format on this Disclosure Plan
 - The Seller, under the Contract Terms, is entitled to make Variations to the lot, including its location, area, size, dimensions, and elevation. Without limitation, if the area of the Lot on the Plan is not more than 5% different to the total area of the Lot as shown on this Disclosure Plan, the Variation is deemed to be a Permitted Variation and the Buyer cannot object.
 - Design contours are approximate only and may change during construction
 - Services have been plotted from design information only and may change during construction
 - All earthworks fill to lots has been placed and compacted on Level 1 basis in accordance with Australian Standard AS3798-2007 "Guidelines on earthworks for commercial and residential developments".

LEGEND

- SW-SW- STORMWATER PIPE
- >>> STORMWATER SWALES
- ⊙ STORMWATER MANHOLE
- ⊞ STORMWATER GULLY PIT
- ⊞ GULLY TRAP
- ⊞ HEADWALL
- ⊞ WATER METER
- W-W- WATER PIPE
- C-C- WATER CONDUIT
- ⊞ ELECTRICITY PILLAR
- ⊞ LIGHT POLE
- UE-UE- UNDERGROUND ELECTRICITY
- - - 41 - - - EXISTING SURFACE CONTOURS
- - - 41 - - - DESIGN CONTOURS
- █ DESIGN FILL



PUBLIC USE LAND

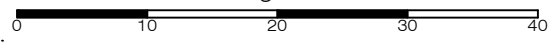


LEGEND

- Building Envelopes

Typical Building Envelope

Scale 1:600 - Lengths are in Metres.



gassman
development
perspectives

est 1985

planning | environment | landscape | engineering | survey

T: 3807 3333 | F: 3287 5461 | www.gassman.com.au

Gold Coast & Logan | 76 Business Street, Yatala QLD | PO Box 392, Beenleigh 4207

Client Kingsholme Developments Pty. Ltd.

Project **DISCLOSURE PLAN**
LOT 58
(Survey plan: SP264750)
MONTIGO HILLS
97, 105 Upper Ormeau Road, Kingsholme

Parish of	Pimpama	Issue Date	27/09/2016
County of	Ward	Meridian	SP264738
Local Govt	GOLD COAST CITY COUNCIL	Level Datum	AHD
		Contour Interval	1.0m
		Drawn	R. McGrory
		Date Drafted	10/08/2016
		Checked	T. Geraghty

Real Property Description:
Lot 951 on SP264738

REFERENCE No. 5543-14
PLAN No. 5543 S DC LOT 58 A

Notes:

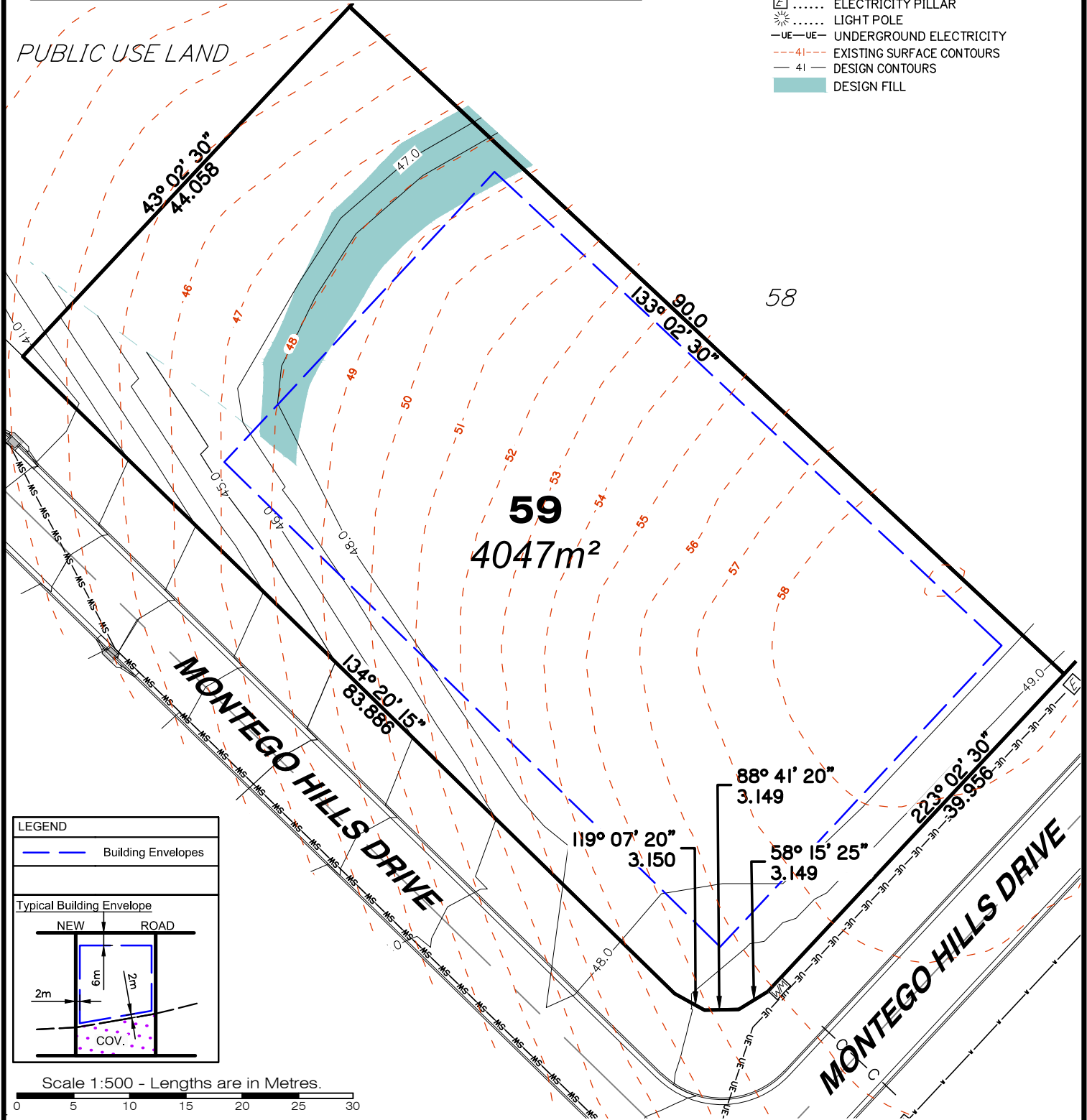
- Final areas are subject to design changes, Council approval and field survey and may differ from those shown on this Disclosure Plan.
- Final presentation of areas will comply with requirements of the Registrar of Titles and may vary from the format on this Disclosure Plan
- The Seller, under the Contract Terms, is entitled to make Variations to the lot, including its location, area, size, dimensions, and elevation. Without limitation, if the area of the Lot on the Plan is not more than 5% different to the total area of the Lot as shown on this Disclosure Plan, the Variation is deemed to be a Permitted Variation and the Buyer cannot object.
- Design contours are approximate only and may change during construction
- Services have been plotted from design information only and may change during construction
- All earthworks fill to lots has been placed and compacted on Level 1 basis in accordance with Australian Standard AS3798-2007 "Guidelines on earthworks for commercial and residential developments".

LEGEND

- SW-SW- STORMWATER PIPE
- >->- STORMWATER SWALES
- ⊕ STORMWATER MANHOLE
- STORMWATER GULLY PIT
- GULLY TRAP
- HEADWALL
- WATER METER
- W-W- WATER PIPE
- C-C- WATER CONDUIT
- ELECTRICITY PILLAR
- LIGHT POLE
- UE-UE- UNDERGROUND ELECTRICITY
- -41- - - EXISTING SURFACE CONTOURS
- 41 - - - DESIGN CONTOURS
- DESIGN FILL



PUBLIC USE LAND



LEGEND

- Building Envelopes

Typical Building Envelope

Scale 1:500 - Lengths are in Metres.

gassman development perspectives

planning | environment | landscape | engineering | survey

T: 3807 3333 | F: 3287 5461 | www.gassman.com.au

Gold Coast & Logan | 76 Business Street, Yatala QLD | PO Box 392, Beenleigh 4207

Client **Kingsholme Developments Pty. Ltd.**

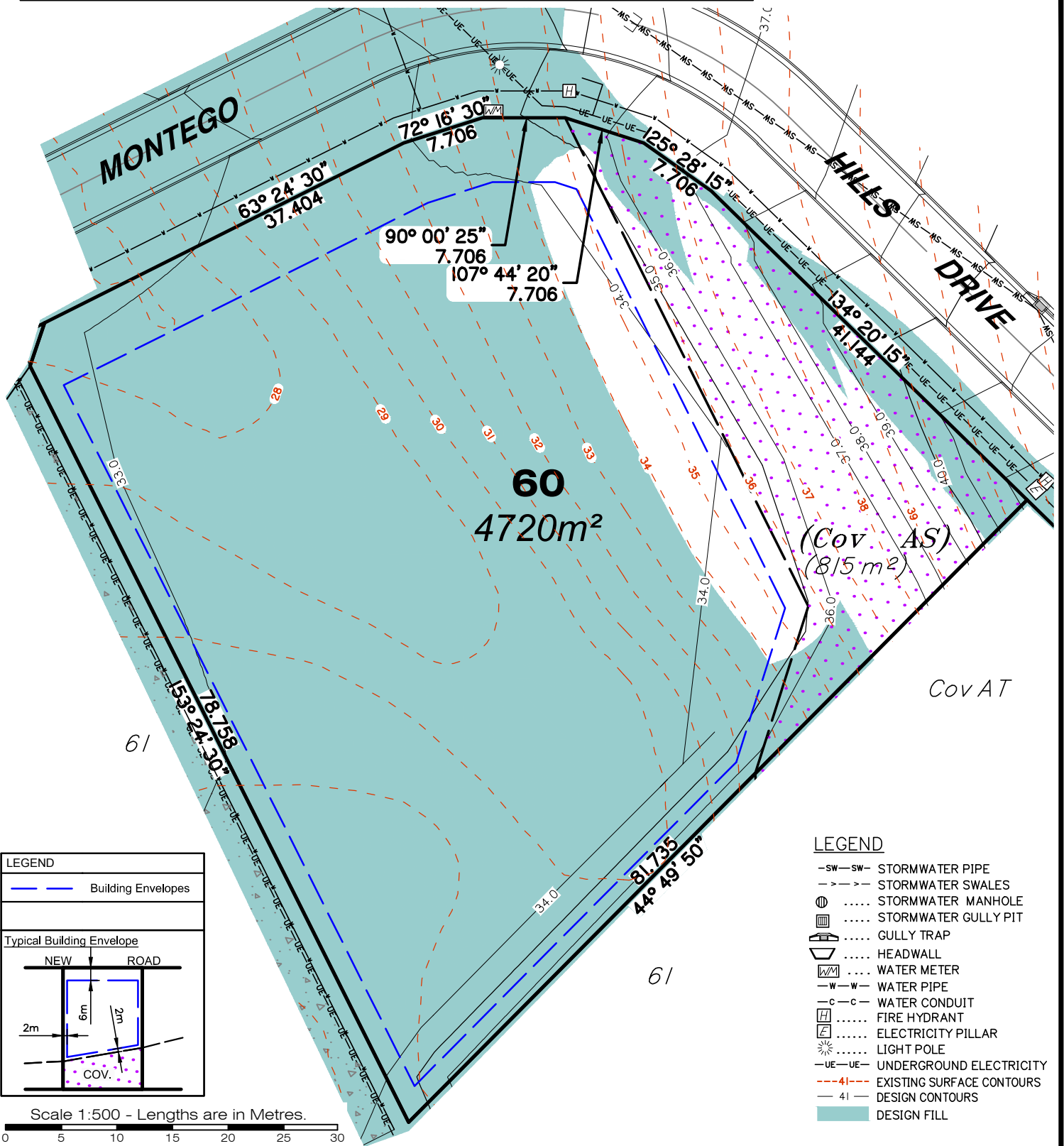
Project **DISCLOSURE PLAN**
LOT 59
(Survey plan: SP264750)
MONTEGO HILLS
97, 105 Upper Ormeau Road, Kingsholme

Real Property Description:
Lot 951 on SP264738

Parish of	Pimpama	Issue Date	27/09/2016
County of	Ward	Meridian	SP264738
Local Govt	GOLD COAST CITY COUNCIL	Level Datum	AHD
		Contour Interval	1.0m
Scale (on A4 original)	1:500	Drawn	R. McGrory
		Date Drafted	10/08/2016
		Checked	T. Geraghty
REFERENCE No.	5543-14		
PLAN No.	5543 S DC LOT 59 A		

Notes:

- Final areas are subject to design changes, Council approval and field survey and may differ from those shown on this Disclosure Plan.
- Final presentation of areas will comply with requirements of the Registrar of Titles and may vary from the format on this Disclosure Plan
- The Seller, under the Contract Terms, is entitled to make Variations to the lot, including its location, area, size, dimensions, and elevation. Without limitation, if the area of the Lot on the Plan is not more than 5% different to the total area of the Lot as shown on this Disclosure Plan, the Variation is deemed to be a Permitted Variation and the Buyer cannot object.
- Design contours are approximate only and may change during construction
- Services have been plotted from design information only and may change during construction
- All earthworks fill to lots has been placed and compacted on Level 1 basis in accordance with Australian Standard AS3798-2007 "Guidelines on earthworks for commercial and residential developments".



LEGEND

— Building Envelopes

Typical Building Envelope

Scale 1:500 - Lengths are in Metres.

LEGEND

- SW—SW— STORMWATER PIPE
- >->- STORMWATER SWALES
- ⊙ STORMWATER MANHOLE
- ⊠ STORMWATER GULLY PIT
- ⊞ GULLY TRAP
- ▤ HEADWALL
- ⊞ WATER METER
- W-W- WATER PIPE
- c-c- WATER CONDUIT
- ⊞ FIRE HYDRANT
- ⊞ ELECTRICITY PILLAR
- ⊞ LIGHT POLE
- UE-UE- UNDERGROUND ELECTRICITY
- 41-41- EXISTING SURFACE CONTOURS
- 41-41- DESIGN CONTOURS
- █ DESIGN FILL

gassman
development
perspectives

est 1985

planning | environment | landscape | engineering | survey

T: 3807 3333 | F: 3287 5461 | www.gassman.com.au

Gold Coast & Logan | 76 Business Street, Yatala QLD | PO Box 392, Beenleigh 4207

Client **Kingsholme Developments Pty. Ltd.**

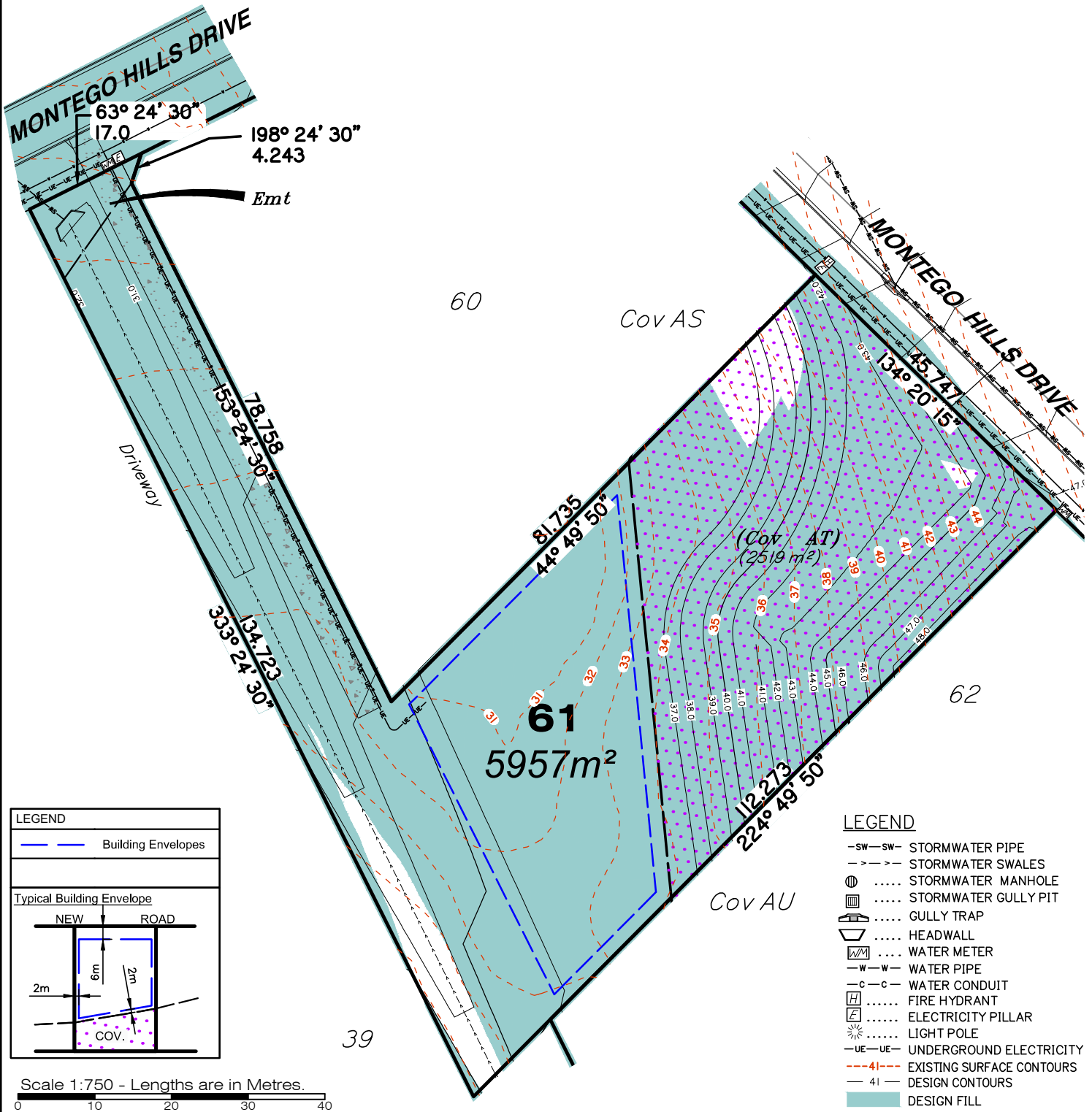
Project **DISCLOSURE PLAN**
LOT 60
(Survey plan: SP264750)
MONTEGO HILLS
97, 105 Upper Ormeau Road, Kingsholme

Real Property Description:
Lot 951 on SP264738

Parish of	Pimpama	Issue Date	27/09/2016
County of	Ward	Meridian	SP264738
Local Govt	GOLD COAST CITY COUNCIL	Level Datum	AHD
		Contour Interval	1.0m
Scale (on A4 original)	1:500	Drawn	R. McGrory
		Date Drafted	10/08/2016
		Checked	T. Geraghty
REFERENCE No.	5543-14		
PLAN No.	5543 S DC LOT 60 A		

Notes:

- Final areas are subject to design changes, Council approval and field survey and may differ from those shown on this Disclosure Plan.
- Final presentation of areas will comply with requirements of the Registrar of Titles and may vary from the format on this Disclosure Plan
- The Seller, under the Contract Terms, is entitled to make Variations to the lot, including its location, area, size, dimensions, and elevation. Without limitation, if the area of the Lot on the Plan is not more than 5% different to the total area of the Lot as shown on this Disclosure Plan, the Variation is deemed to be a Permitted Variation and the Buyer cannot object.
- Design contours are approximate only and may change during construction
- Services have been plotted from design information only and may change during construction
- All earthworks fill to lots has been placed and compacted on Level 1 basis in accordance with Australian Standard AS3798-2007 "Guidelines on earthworks for commercial and residential developments".



LEGEND

— Building Envelopes

Typical Building Envelope

NEW ROAD

6m

2m

2m

COV.

LEGEND

—SW—SW— STORMWATER PIPE

->->- STORMWATER SWALES

⊕ STORMWATER MANHOLE

⊞ STORMWATER GULLY PIT

⊞ GULLY TRAP

⊞ HEADWALL

⊞ WATER METER

—W—W— WATER PIPE

—c—c— WATER CONDUIT

⊞ FIRE HYDRANT

⊞ ELECTRICITY PILLAR

⊞ LIGHT POLE

—UE—UE— UNDERGROUND ELECTRICITY

---41--- EXISTING SURFACE CONTOURS

— 41 — DESIGN CONTOURS

■ DESIGN FILL

Scale 1:750 - Lengths are in Metres.

0 10 20 30 40

gassman development perspectives

est 1985

planning | environment | landscape | engineering | survey

T: 3807 3333 | F: 3287 5461 | www.gassman.com.au

Gold Coast & Logan | 76 Business Street, Yatala QLD | PO Box 392, Beenleigh 4207

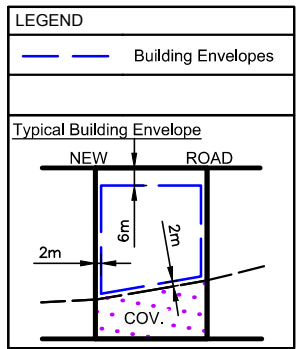
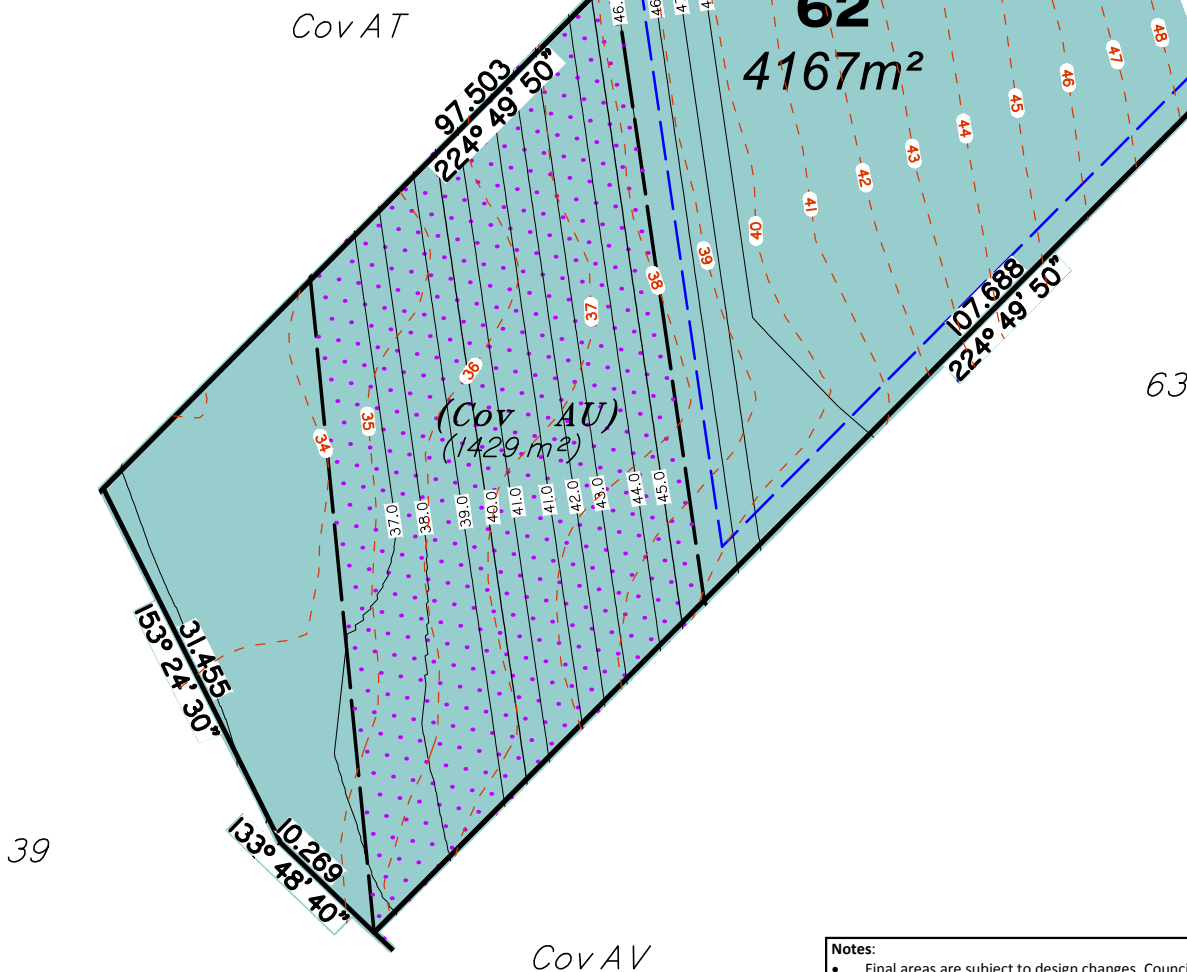
Client	Kingsholme Developments Pty. Ltd.
Project	DISCLOSURE PLAN LOT 61 (Survey plan: SP264750) MONTEGO HILLS 97, 105 Upper Ormeau Road, Kingsholme
Real Property Description:	Lot 951 on SP264738

Parish of	Pimpama	Issue Date	27/09/2016
County of	Ward	Meridian	SP264738
Local Govt	GOLD COAST CITY COUNCIL	Level Datum	AHD
		Contour Interval	1.0m
Scale (on A4 original)	1:750	Drawn	R. McGrory
		Date Drafted	10/08/2016
		Checked	T. Geraghty
REFERENCE No.	5543-14		
PLAN No.	5543 S DC LOT 61 A		



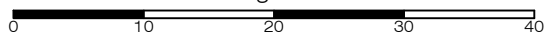
LEGEND

- SW-SW- STORMWATER PIPE
- >->- STORMWATER SWALES
- ⊙ STORMWATER MANHOLE
- ⊞ STORMWATER GULLY PIT
- ⊞ GULLY TRAP
- ⊞ HEADWALL
- ⊞ WATER METER
- W-W- WATER PIPE
- c-c- WATER CONDUIT
- ⊞ FIRE HYDRANT
- ⊞ ELECTRICITY PILLAR
- ☀ LIGHT POLE
- UE-UE- UNDERGROUND ELECTRICITY
- 41-41- EXISTING SURFACE CONTOURS
- 41 DESIGN CONTOURS
- █ DESIGN FILL



- Notes:**
- Final areas are subject to design changes, Council approval and field survey and may differ from those shown on this Disclosure Plan.
 - Final presentation of areas will comply with requirements of the Registrar of Titles and may vary from the format on this Disclosure Plan
 - The Seller, under the Contract Terms, is entitled to make Variations to the lot, including its location, area, size, dimensions, and elevation. Without limitation, if the area of the Lot on the Plan is not more than 5% different to the total area of the Lot as shown on this Disclosure Plan, the Variation is deemed to be a Permitted Variation and the Buyer cannot object.
 - Design contours are approximate only and may change during construction
 - Services have been plotted from design information only and may change during construction
 - All earthworks fill to lots has been placed and compacted on Level 1 basis in accordance with Australian Standard AS3798-2007 "Guidelines on earthworks for commercial and residential developments".

PUBLIC USE LAND
Scale 1:600 - Lengths are in Metres.



gassman
development
perspectives

planning | environment | landscape | engineering | survey

T: 3807 3333 | F: 3287 5461 | www.gassman.com.au

Gold Coast & Logan | 76 Business Street, Yatala QLD | PO Box 392, Beenleigh 4207

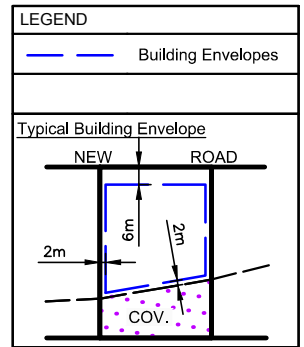
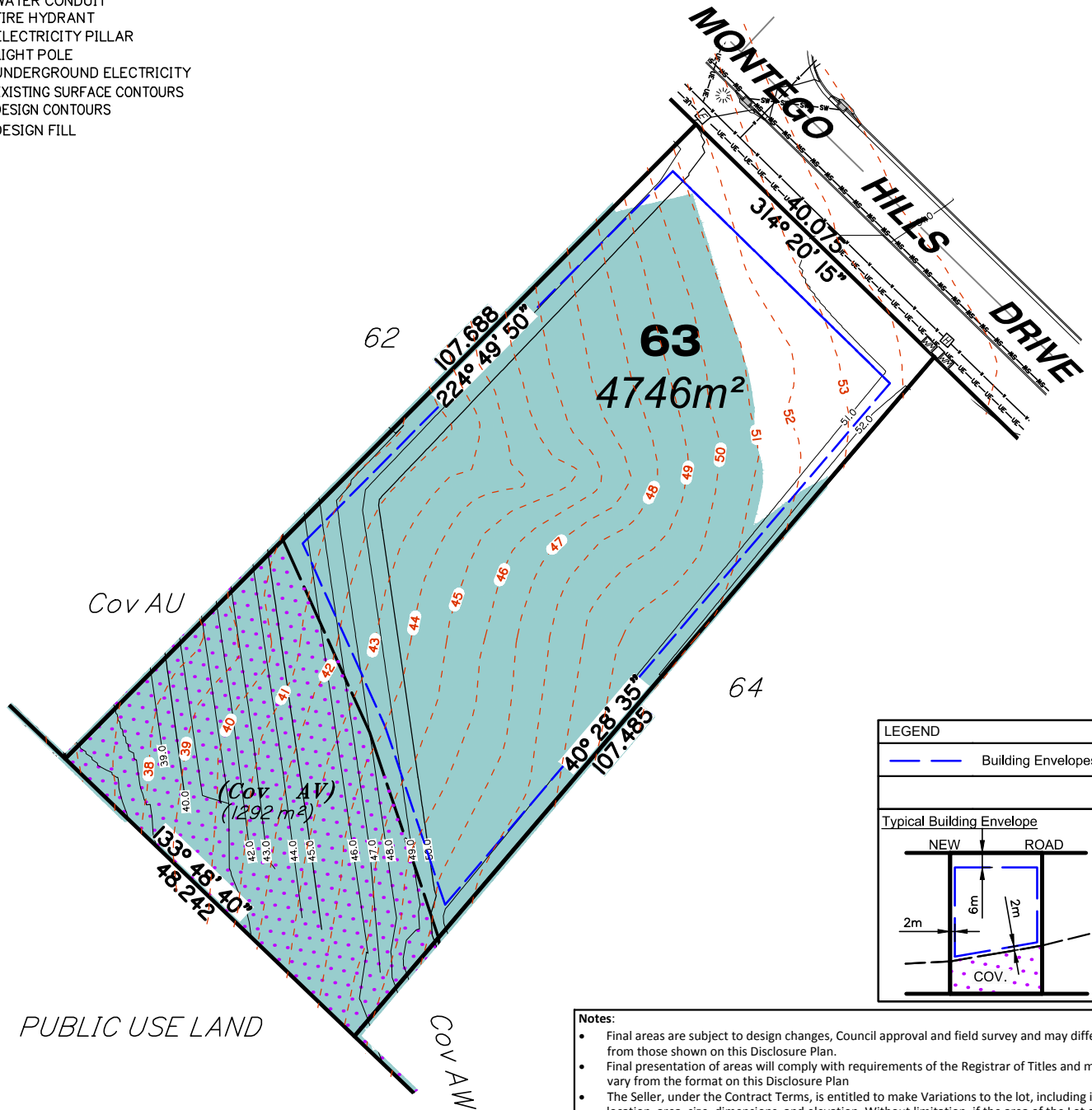
Client	Kingsholme Developments Pty. Ltd.
Project	DISCLOSURE PLAN LOT 62 MONTEGO HILLS (Survey plan: SP264750)
	97, 105 Upper Ormeau Road, Kingsholme
Real Property Description: Lot 951 on SP264738	

Parish of	Pimpama	Issue Date	27/09/2016
County of	Ward	Meridian	SP264738
Local Govt	GOLD COAST CITY COUNCIL	Level Datum	AHD
		Contour Interval	1.0m
Scale (on A4 original)	1:600	Drawn	R. McGrory
		Date Drafted	10/08/2016
		Checked	T. Geraghty
REFERENCE No.	5543-14		
PLAN No.	5543 S DC LOT 62 A		



LEGEND

- SW-SW- STORMWATER PIPE
- >->- STORMWATER SWALES
- ⊙ STORMWATER MANHOLE
- ⊞ STORMWATER GULLY PIT
- ⊞ GULLY TRAP
- ▽ HEADWALL
- ⊞ WATER METER
- W-W- WATER PIPE
- C-C- WATER CONDUIT
- ⊞ FIRE HYDRANT
- ⊞ ELECTRICITY PILLAR
- ☀ LIGHT POLE
- UE-UE- UNDERGROUND ELECTRICITY
- -41- - EXISTING SURFACE CONTOURS
- - 41 - - DESIGN CONTOURS
- █ DESIGN FILL



- Notes:**
- Final areas are subject to design changes, Council approval and field survey and may differ from those shown on this Disclosure Plan.
 - Final presentation of areas will comply with requirements of the Registrar of Titles and may vary from the format on this Disclosure Plan
 - The Seller, under the Contract Terms, is entitled to make Variations to the lot, including its location, area, size, dimensions, and elevation. Without limitation, if the area of the Lot on the Plan is not more than 5% different to the total area of the Lot as shown on this Disclosure Plan, the Variation is deemed to be a Permitted Variation and the Buyer cannot object.
 - Design contours are approximate only and may change during construction
 - Services have been plotted from design information only and may change during construction
 - All earthworks fill to lots has been placed and compacted on Level 1 basis in accordance with Australian Standard AS3798-2007 "Guidelines on earthworks for commercial and residential developments".

Scale 1:750 - Lengths are in Metres.

gassman
development
perspectives

est 1985

planning | environment | landscape | engineering | survey

T: 3807 3333 | F: 3287 5461 | www.gassman.com.au

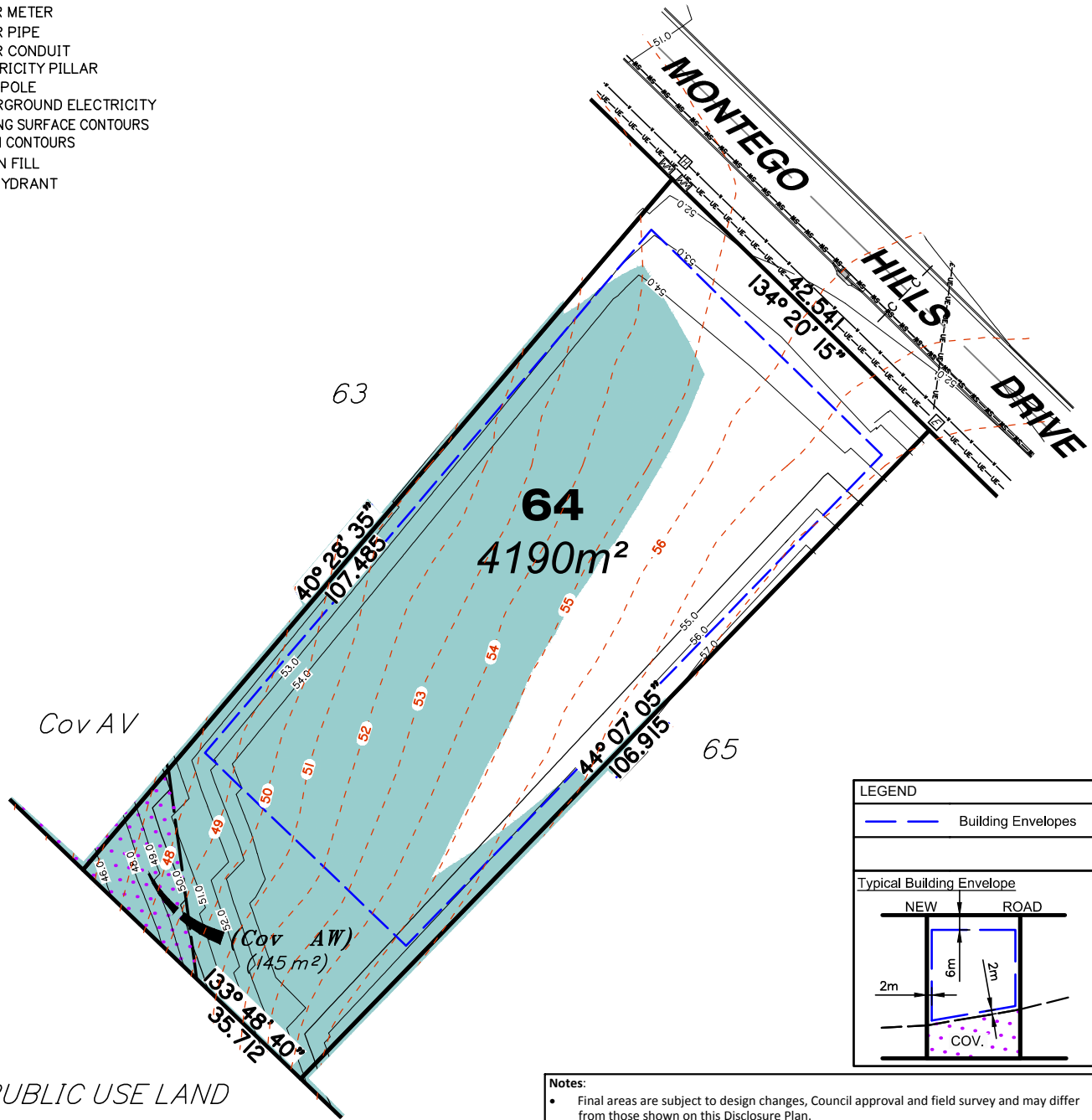
Gold Coast & Logan | 76 Business Street, Yatala QLD | PO Box 392, Beenleigh 4207

Client	Kingsholme Developments Pty. Ltd.
Project	DISCLOSURE PLAN LOT 63 MONTEGO HILLS (Survey plan: SP264750)
	97, 105 Upper Ormeau Road, Kingsholme
Real Property Description:	Lot 951 on SP264738

Parish of	Pimpama	Issue Date	27/09/2016
County of	Ward	Meridian	SP264738
Local Govt	GOLD COAST CITY COUNCIL	Level Datum	AHD
		Contour Interval	1.0m
Scale (on A4 original)	1:750	Drawn	R. McGrory
		Date Drafted	10/08/2016
		Checked	T. Geraghty
REFERENCE No.	5543-14		
PLAN No.	5543 S DC LOT 63 A		

LEGEND

- SW-SW- STORMWATER PIPE
- >->- STORMWATER SWALES
- ⊕ STORMWATER MANHOLE
- ⊞ STORMWATER GULLY PIT
- ⊞ GULLY TRAP
- ▽ HEADWALL
- ⊞ WATER METER
- W-W- WATER PIPE
- C-C- WATER CONDUIT
- ⊞ ELECTRICITY PILLAR
- ☀ LIGHT POLE
- UE-UE- UNDERGROUND ELECTRICITY
- - - - - EXISTING SURFACE CONTOURS
- 4I - DESIGN CONTOURS
- █ DESIGN FILL
- ⊞ FIRE HYDRANT



LEGEND

- Building Envelopes

Typical Building Envelope

- Notes:**
- Final areas are subject to design changes, Council approval and field survey and may differ from those shown on this Disclosure Plan.
 - Final presentation of areas will comply with requirements of the Registrar of Titles and may vary from the format on this Disclosure Plan
 - The Seller, under the Contract Terms, is entitled to make Variations to the lot, including its location, area, size, dimensions, and elevation. Without limitation, if the area of the Lot on the Plan is not more than 5% different to the total area of the Lot as shown on this Disclosure Plan, the Variation is deemed to be a Permitted Variation and the Buyer cannot object.
 - Design contours are approximate only and may change during construction
 - Services have been plotted from design information only and may change during construction
 - All earthworks fill to lots has been placed and compacted on Level 1 basis in accordance with Australian Standard AS3798-2007 "Guidelines on earthworks for commercial and residential developments".

Scale 1:750 - Lengths are in Metres.

gassman development perspectives

planning | environment | landscape | engineering | survey

T: 3807 3333 | F: 3287 5461 | www.gassman.com.au

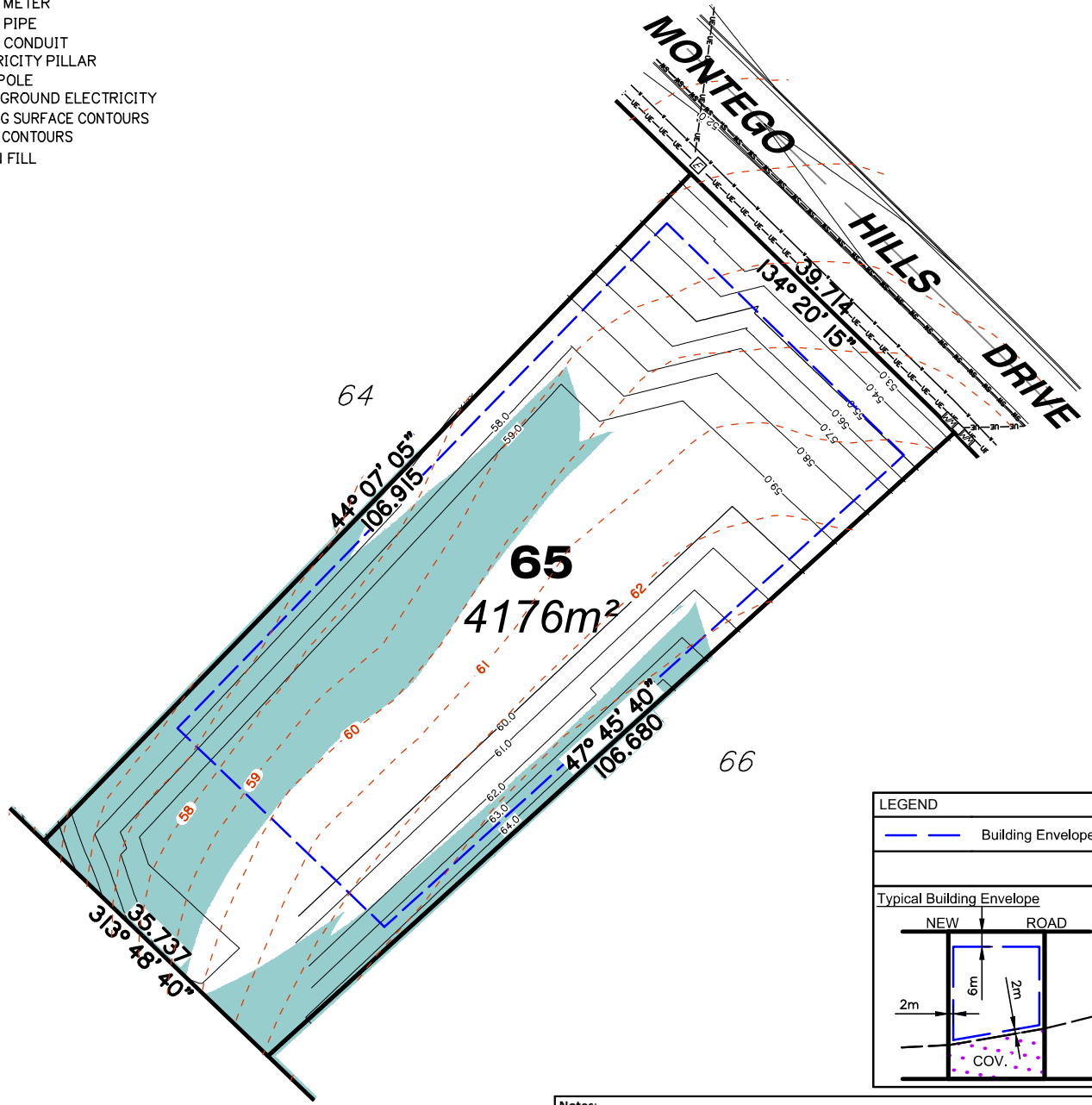
Gold Coast & Logan | 76 Business Street, Yatala QLD | PO Box 392, Beenleigh 4207

Client	Kingsholme Developments Pty. Ltd.
Project	DISCLOSURE PLAN LOT 64 MONTEGO HILLS (Survey plan: SP264750) 97, 105 Upper Ormeau Road, Kingsholme
Real Property Description:	Lot 951 on SP264738

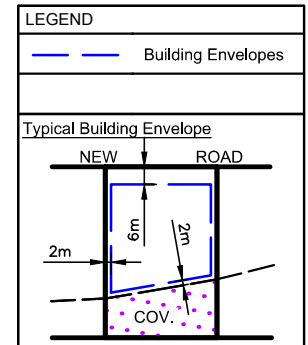
Parish of	Pimpama	Issue Date	27/09/2016
County of	Ward	Meridian	SP264738
Local Govt	GOLD COAST CITY COUNCIL	Level Datum	AHD
		Contour Interval	1.0m
Scale (on A4 original)	1:750	Drawn	R. McGrory
		Date Drafted	10/08/2016
		Checked	T. Geraghty
REFERENCE No.	5543-14		
PLAN No.	5543 S DC LOT 64 A		

LEGEND

- SW-SW- STORMWATER PIPE
- >->- STORMWATER SWALES
- ⊕ STORMWATER MANHOLE
- ⊞ STORMWATER GULLY PIT
- ⊞ GULLY TRAP
- ▽ HEADWALL
- ⊞ WATER METER
- W-W- WATER PIPE
- C-C- WATER CONDUIT
- ⊞ ELECTRICITY PILLAR
- ☀ LIGHT POLE
- UE-UE- UNDERGROUND ELECTRICITY
- -41- - EXISTING SURFACE CONTOURS
- -41- - DESIGN CONTOURS
- █ DESIGN FILL



PUBLIC USE LAND



- Notes:**
- Final areas are subject to design changes, Council approval and field survey and may differ from those shown on this Disclosure Plan.
 - Final presentation of areas will comply with requirements of the Registrar of Titles and may vary from the format on this Disclosure Plan
 - The Seller, under the Contract Terms, is entitled to make Variations to the lot, including its location, area, size, dimensions, and elevation. Without limitation, if the area of the Lot on the Plan is not more than 5% different to the total area of the Lot as shown on this Disclosure Plan, the Variation is deemed to be a Permitted Variation and the Buyer cannot object.
 - Design contours are approximate only and may change during construction
 - Services have been plotted from design information only and may change during construction
 - All earthworks fill to lots has been placed and compacted on Level 1 basis in accordance with Australian Standard AS3798-2007 "Guidelines on earthworks for commercial and residential developments".

Scale 1:750 - Lengths are in Metres.

gassman
development
perspectives

est 1985

planning | environment | landscape | engineering | survey

T: 3807 3333 | F: 3287 5461 | www.gassman.com.au

Gold Coast & Logan | 76 Business Street, Yatala QLD | PO Box 392, Beenleigh 4207

Client **Kingsholme Developments Pty. Ltd.**

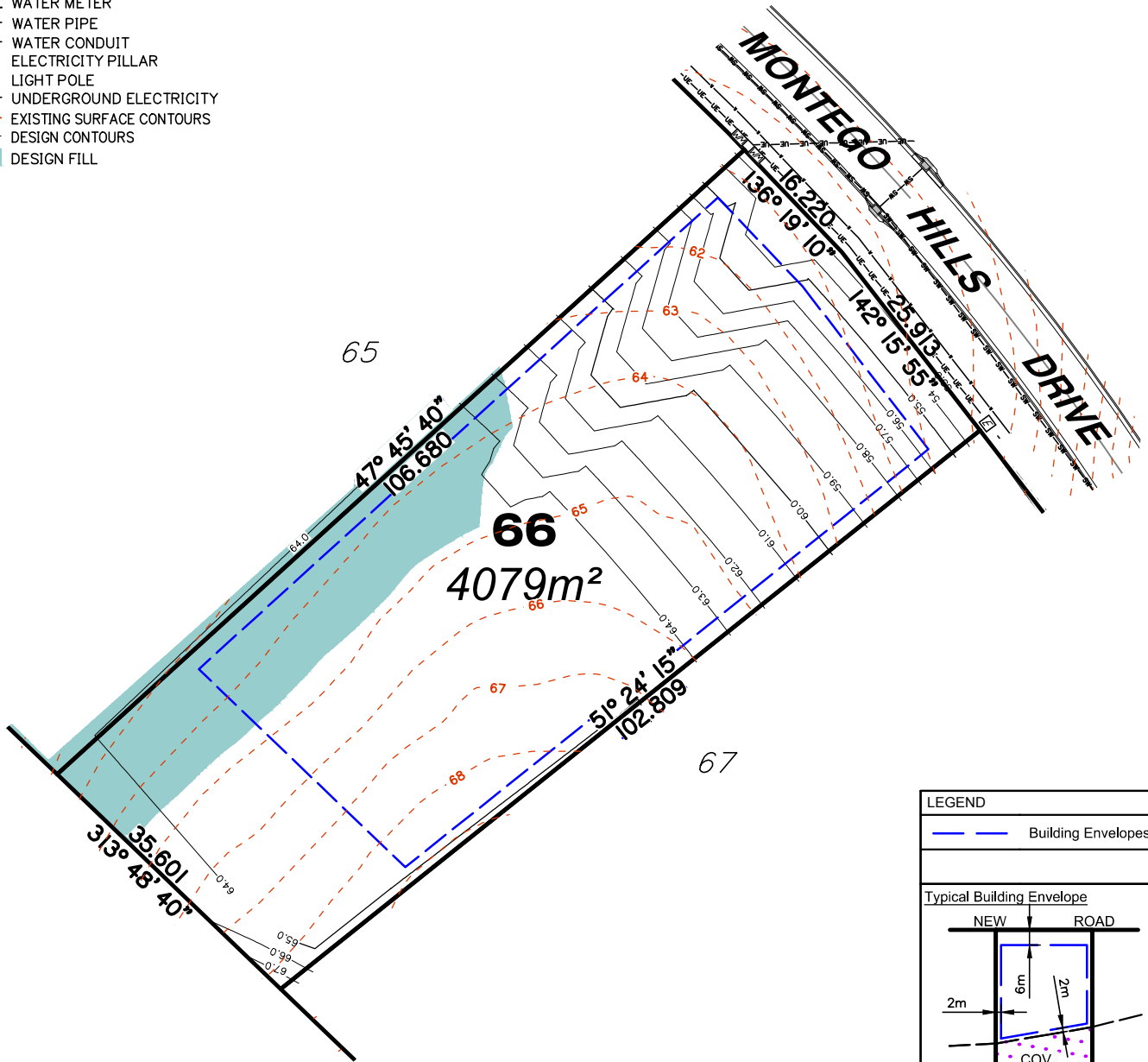
Project **DISCLOSURE PLAN**
LOT 65
(Survey plan: SP264750)
MONTEGO HILLS
97, 105 Upper Ormeau Road, Kingsholme

Real Property Description:
Lot 951 on SP264738

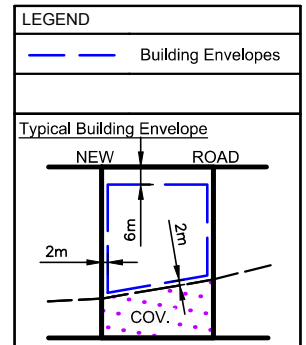
Parish of	Pimpama	Issue Date	27/09/2016
County of	Ward	Meridian	SP264738
Local Govt	GOLD COAST CITY COUNCIL	Level Datum	AHD
		Contour Interval	1.0m
Scale (on A4 original)	1:750	Drawn	R. McGrory
		Date Drafted	10/08/2016
		Checked	T. Geraghty
REFERENCE No.	5543-14		
PLAN No.	5543 S DC LOT 65 A		

LEGEND

- SW-SW- STORMWATER PIPE
- >->- STORMWATER SWALES
- ⊕ STORMWATER MANHOLE
- ⊞ STORMWATER GULLY PIT
- ⊞ GULLY TRAP
- ▽ HEADWALL
- ⊞ WATER METER
- W-W- WATER PIPE
- C-C- WATER CONDUIT
- ⊞ ELECTRICITY PILLAR
- ☀ LIGHT POLE
- UE-UE- UNDERGROUND ELECTRICITY
- -41- - EXISTING SURFACE CONTOURS
- -41- - DESIGN CONTOURS
- █ DESIGN FILL



PUBLIC USE LAND



- Notes:**
- Final areas are subject to design changes, Council approval and field survey and may differ from those shown on this Disclosure Plan.
 - Final presentation of areas will comply with requirements of the Registrar of Titles and may vary from the format on this Disclosure Plan
 - The Seller, under the Contract Terms, is entitled to make Variations to the lot, including its location, area, size, dimensions, and elevation. Without limitation, if the area of the Lot on the Plan is not more than 5% different to the total area of the Lot as shown on this Disclosure Plan, the Variation is deemed to be a Permitted Variation and the Buyer cannot object.
 - Design contours are approximate only and may change during construction
 - Services have been plotted from design information only and may change during construction
 - All earthworks fill to lots has been placed and compacted on Level 1 basis in accordance with Australian Standard AS3798-2007 "Guidelines on earthworks for commercial and residential developments".

Scale 1:750 - Lengths are in Metres.

gassman
development
perspectives

est 1985

planning | environment | landscape | engineering | survey

T: 3807 3333 | F: 3287 5461 | www.gassman.com.au

Gold Coast & Logan | 76 Business Street, Yatala QLD | PO Box 392, Beenleigh 4207

Client **Kingsholme Developments Pty. Ltd.**

Project **DISCLOSURE PLAN**
LOT 66
MONTEGO HILLS
(Survey plan: SP264750)
97, 105 Upper Ormeau Road, Kingsholme

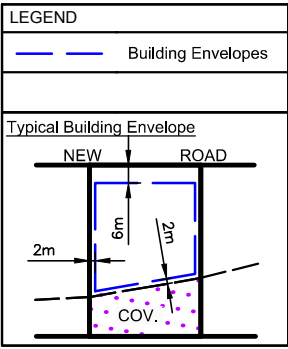
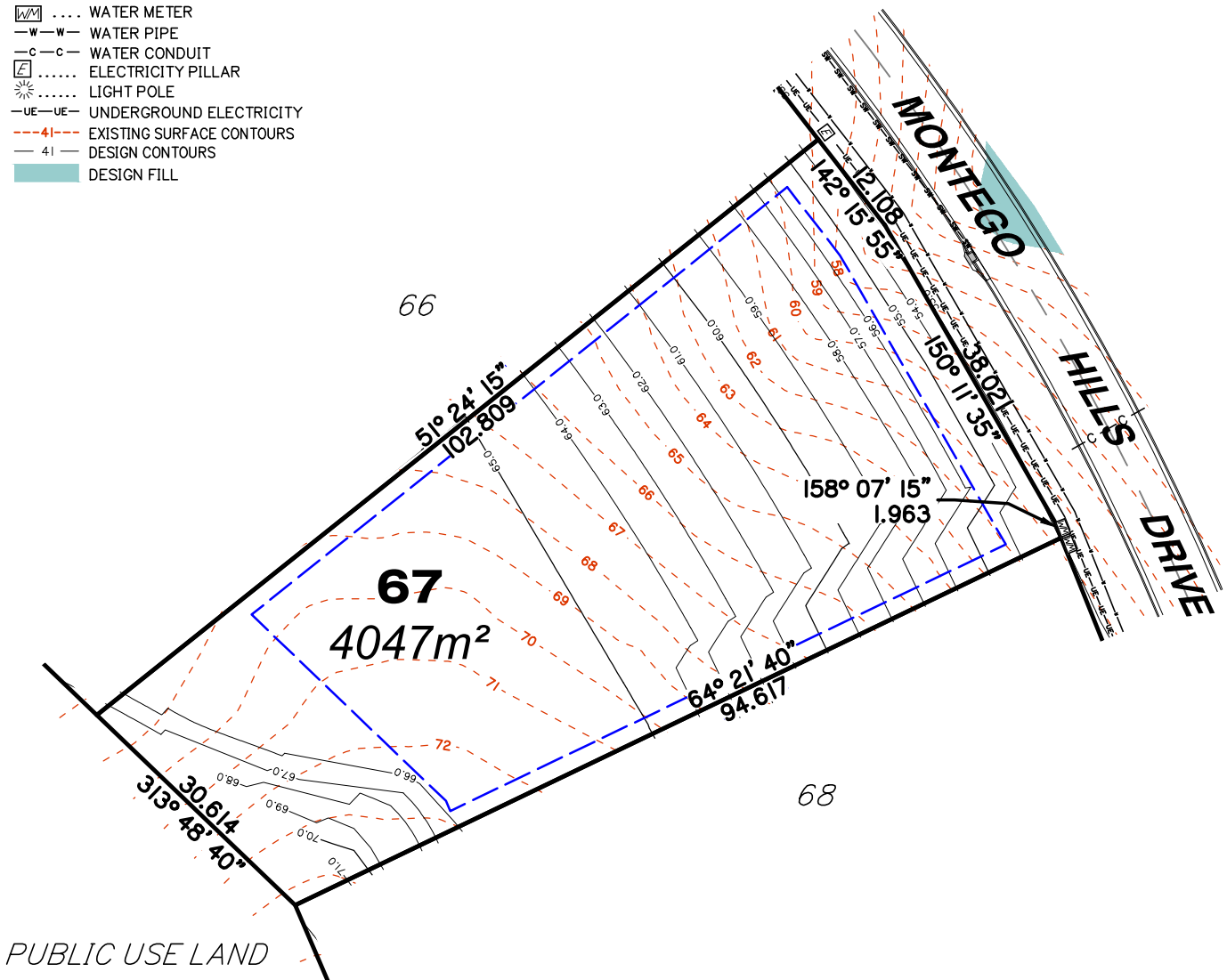
Real Property Description:
Lot 951 on SP264738

Parish of	Pimpama	Issue Date	27/09/2016
County of	Ward	Meridian	SP264738
Local Govt	GOLD COAST CITY COUNCIL	Level Datum	AHD
		Contour Interval	1.0m
		Drawn	R. McGrory
		Date Drafted	10/08/2016
		Checked	T. Geraghty
Scale (on A4 original)	1:750	REFERENCE No.	5543-14
		PLAN No.	5543 S DC LOT 66 A



LEGEND

- SW-SW- STORMWATER PIPE
- >->- STORMWATER SWALES
- ⊕ STORMWATER MANHOLE
- ⊞ STORMWATER GULLY PIT
- ⊞ GULLY TRAP
- ▽ HEADWALL
- WM WATER METER
- W-W- WATER PIPE
- C-C- WATER CONDUIT
- ⊞ ELECTRICITY PILLAR
- ☀ LIGHT POLE
- UE-UE- UNDERGROUND ELECTRICITY
- 4I-4I- EXISTING SURFACE CONTOURS
- 4I-4I- DESIGN CONTOURS
- █ DESIGN FILL



Scale 1:750 - Lengths are in Metres.

- Notes:**
- Final areas are subject to design changes, Council approval and field survey and may differ from those shown on this Disclosure Plan.
 - Final presentation of areas will comply with requirements of the Registrar of Titles and may vary from the format on this Disclosure Plan
 - The Seller, under the Contract Terms, is entitled to make Variations to the lot, including its location, area, size, dimensions, and elevation. Without limitation, if the area of the Lot on the Plan is not more than 5% different to the total area of the Lot as shown on this Disclosure Plan, the Variation is deemed to be a Permitted Variation and the Buyer cannot object.
 - Design contours are approximate only and may change during construction
 - Services have been plotted from design information only and may change during construction
 - All earthworks fill to lots has been placed and compacted on Level 1 basis in accordance with Australian Standard AS3798-2007 "Guidelines on earthworks for commercial and residential developments".

gassman development perspectives
est 1985

planning | environment | landscape | engineering | survey

T: 3807 3333 | F: 3287 5461 | www.gassman.com.au

Gold Coast & Logan | 76 Business Street, Yatala QLD | PO Box 392, Beenleigh 4207

Client Kingsholme Developments Pty. Ltd.

Project **DISCLOSURE PLAN**
LOT 67
(Survey plan: SP264750)
MONTEGO HILLS
97, 105 Upper Ormeau Road, Kingsholme

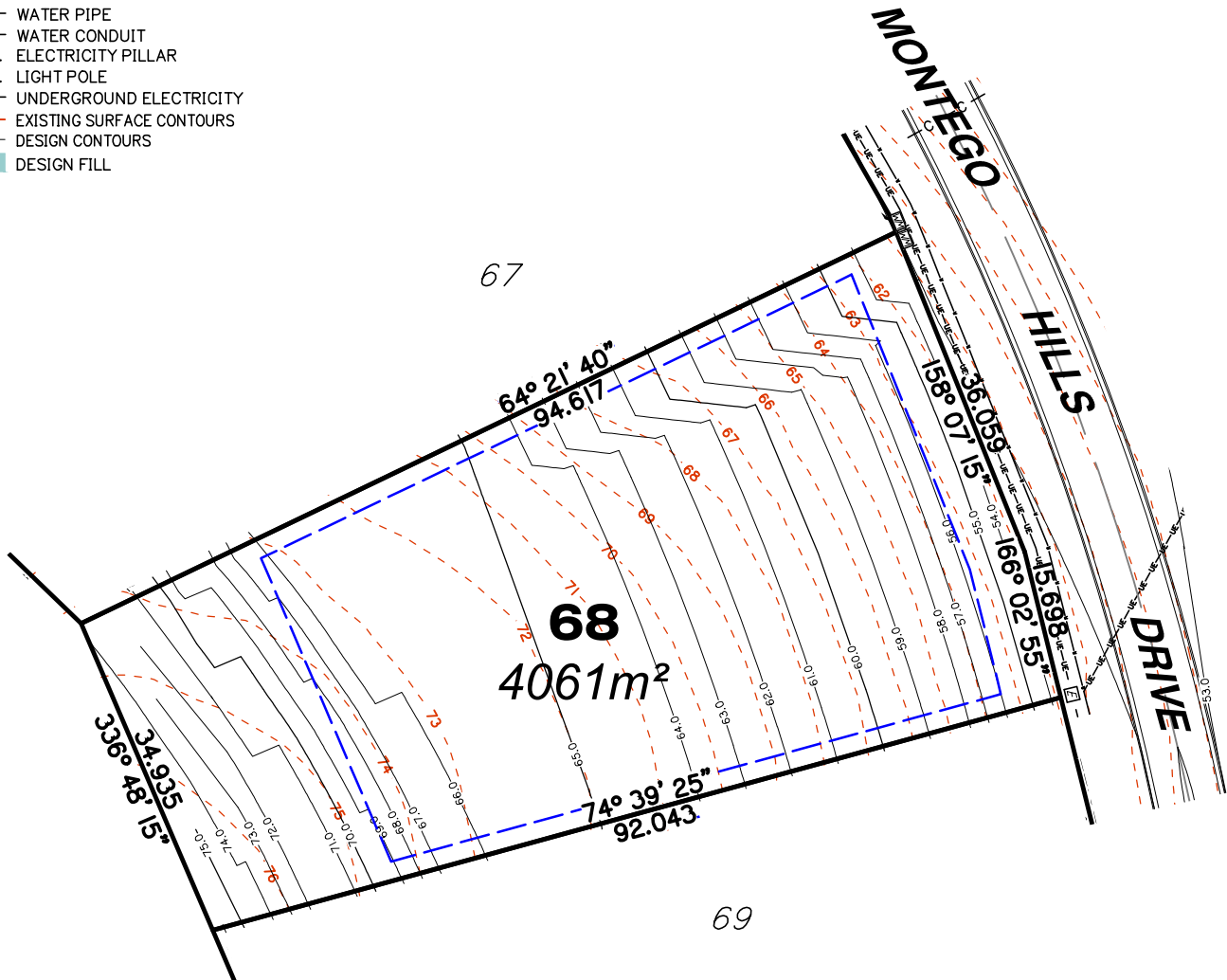
Real Property Description:
Lot 951 on SP264738

Parish of	Pimpama	Issue Date	27/09/2016
County of	Ward	Meridian	SP264738
Local Govt	GOLD COAST CITY COUNCIL	Level Datum	AHD
		Contour Interval	1.0m
		Drawn	R. McGrory
		Date Drafted	10/08/2016
		Checked	T. Geraghty
Scale (on A4 original)	1:750	REFERENCE No.	5543-14
		PLAN No.	5543 S DC LOT 67 A

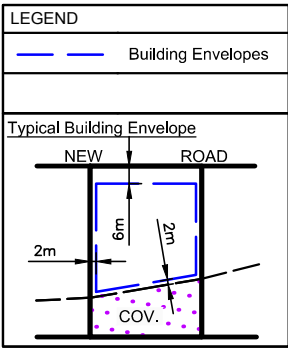


LEGEND

- SW-SW- STORMWATER PIPE
- >->- STORMWATER SWALES
- ⊕ STORMWATER MANHOLE
- ⊞ STORMWATER GULLY PIT
- ⊞ GULLY TRAP
- ▽ HEADWALL
- ⊞ WATER METER
- W-W- WATER PIPE
- C-C- WATER CONDUIT
- ⊞ ELECTRICITY PILLAR
- ☀ LIGHT POLE
- UE-UE- UNDERGROUND ELECTRICITY
- 41-41- EXISTING SURFACE CONTOURS
- 41-41- DESIGN CONTOURS
- █ DESIGN FILL



PUBLIC USE LAND



Scale 1:750 - Lengths are in Metres.

- Notes:**
- Final areas are subject to design changes, Council approval and field survey and may differ from those shown on this Disclosure Plan.
 - Final presentation of areas will comply with requirements of the Registrar of Titles and may vary from the format on this Disclosure Plan
 - The Seller, under the Contract Terms, is entitled to make Variations to the lot, including its location, area, size, dimensions, and elevation. Without limitation, if the area of the Lot on the Plan is not more than 5% different to the total area of the Lot as shown on this Disclosure Plan, the Variation is deemed to be a Permitted Variation and the Buyer cannot object.
 - Design contours are approximate only and may change during construction
 - Services have been plotted from design information only and may change during construction
 - All earthworks fill to lots has been placed and compacted on Level 1 basis in accordance with Australian Standard AS3798-2007 "Guidelines on earthworks for commercial and residential developments"

gassman development perspectives
est 1985

planning | environment | landscape | engineering | survey

T: 3807 3333 | F: 3287 5461 | www.gassman.com.au

Gold Coast & Logan | 76 Business Street, Yatala QLD | PO Box 392, Beenleigh 4207

Client Kingsholme Developments Pty. Ltd.

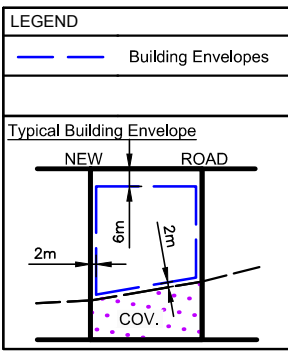
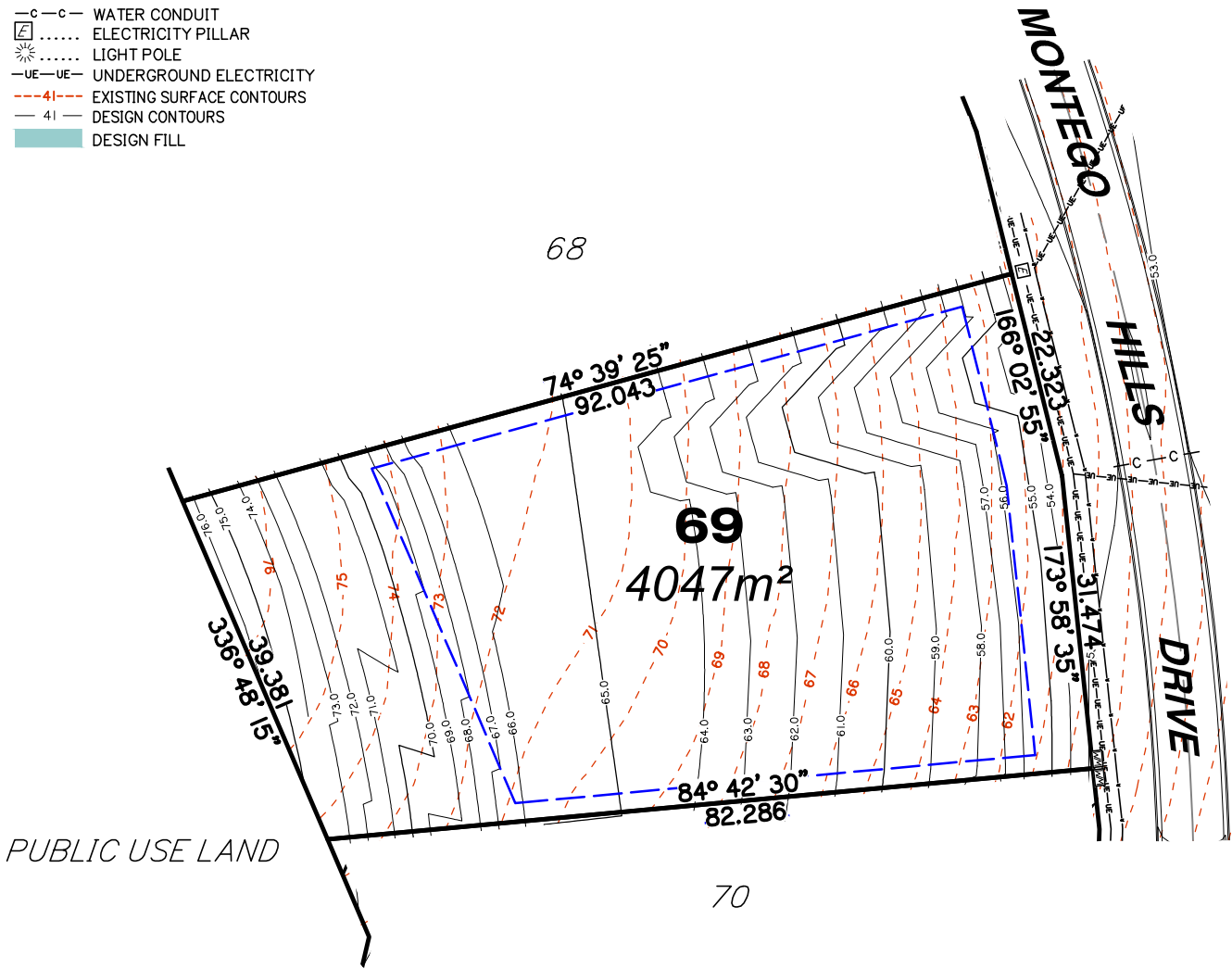
Project DISCLOSURE PLAN
LOT 68
MONTEGO HILLS
(Survey plan: SP264750)
97, 105 Upper Ormeau Road, Kingsholme

Real Property Description:
Lot 951 on SP264738

Parish of	Pimpama	Issue Date	27/09/2016
County of	Ward	Meridian	SP264738
Local Govt	GOLD COAST CITY COUNCIL	Level Datum	AHD
		Contour Interval	1.0m
		Drawn	R. McGrory
Scale (on A4 original)	1:750	Date Drafted	10/08/2016
		Checked	T. Geraghty
REFERENCE No.	5543-14		
PLAN No.	5543 S DC LOT 68 A		

LEGEND

- SW-SW- STORMWATER PIPE
- >->- STORMWATER SWALES
- ⊕ STORMWATER MANHOLE
- ⊞ STORMWATER GULLY PIT
- ⊞ GULLY TRAP
- ▽ HEADWALL
- WM WATER METER
- W-W- WATER PIPE
- C-C- WATER CONDUIT
- ⌚ ELECTRICITY PILLAR
- ☀ LIGHT POLE
- UE-UE- UNDERGROUND ELECTRICITY
- 4I- EXISTING SURFACE CONTOURS
- 4I- DESIGN CONTOURS
- █ DESIGN FILL



Scale 1:750 - Lengths are in Metres.

- Notes:**
- Final areas are subject to design changes, Council approval and field survey and may differ from those shown on this Disclosure Plan.
 - Final presentation of areas will comply with requirements of the Registrar of Titles and may vary from the format on this Disclosure Plan
 - The Seller, under the Contract Terms, is entitled to make Variations to the lot, including its location, area, size, dimensions, and elevation. Without limitation, if the area of the Lot on the Plan is not more than 5% different to the total area of the Lot as shown on this Disclosure Plan, the Variation is deemed to be a Permitted Variation and the Buyer cannot object.
 - Design contours are approximate only and may change during construction
 - Services have been plotted from design information only and may change during construction
 - All earthworks fill to lots has been placed and compacted on Level 1 basis in accordance with Australian Standard AS3798-2007 "Guidelines on earthworks for commercial and residential developments".

gassman development perspectives
est 1985
planning | environment | landscape | engineering | survey
T: 3807 3333 | F: 3287 5461 | www.gassman.com.au
Gold Coast & Logan | 76 Business Street, Yatala QLD | PO Box 392, Beenleigh 4207

Client Kingsholme Developments Pty. Ltd.

Project DISCLOSURE PLAN
LOT 69
MONTEGO HILLS
(Survey plan: SP264750)
97, 105 Upper Ormeau Road, Kingsholme

Real Property Description:
Lot 951 on SP264738

Parish of	Pimpama	Issue Date	27/09/2016
County of	Ward	Meridian	SP264738
Local Govt	GOLD COAST CITY COUNCIL	Level Datum	AHD
		Contour Interval	1.0m
		Drawn	R. McGrory
Scale (on A4 original)	1:750	Date Drafted	10/08/2016
		Checked	T. Geraghty
REFERENCE No.	5543-14		
PLAN No.	5543 S DC LOT 69 A		

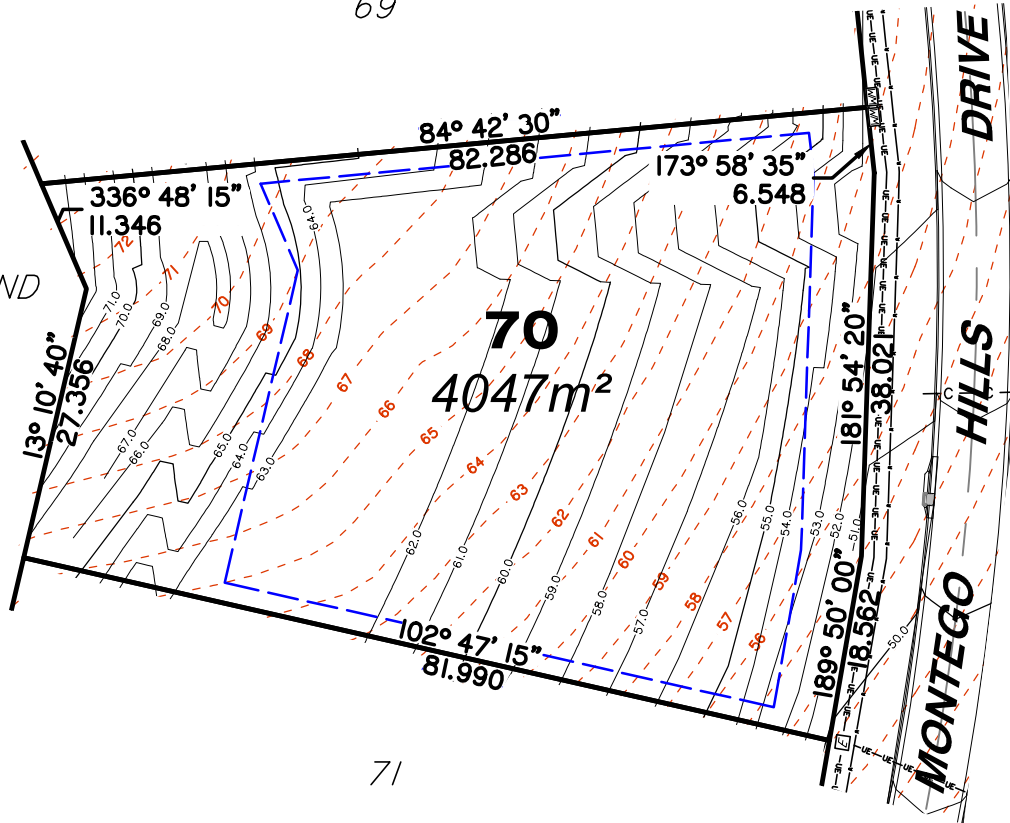


LEGEND

- SW-SW- STORMWATER PIPE
- >->- STORMWATER SWALES
- ⊕ STORMWATER MANHOLE
- ⊞ STORMWATER GULLY PIT
- ⊞ GULLY TRAP
- ▽ HEADWALL
- ⊞ WATER METER
- W-W- WATER PIPE
- C-C- WATER CONDUIT
- ⊞ ELECTRICITY PILLAR
- ☀ LIGHT POLE
- UE-UE- UNDERGROUND ELECTRICITY
- 41-41- EXISTING SURFACE CONTOURS
- 41 DESIGN CONTOURS
- █ DESIGN FILL

69

PUBLIC USE LAND

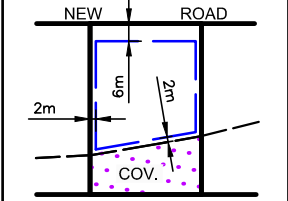


71

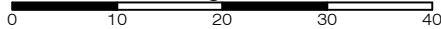
LEGEND

- Building Envelopes

Typical Building Envelope



Scale 1:750 - Lengths are in Metres.



Notes:

- Final areas are subject to design changes, Council approval and field survey and may differ from those shown on this Disclosure Plan.
- Final presentation of areas will comply with requirements of the Registrar of Titles and may vary from the format on this Disclosure Plan
- The Seller, under the Contract Terms, is entitled to make Variations to the lot, including its location, area, size, dimensions, and elevation. Without limitation, if the area of the Lot on the Plan is not more than 5% different to the total area of the Lot as shown on this Disclosure Plan, the Variation is deemed to be a Permitted Variation and the Buyer cannot object.
- Design contours are approximate only and may change during construction
- Services have been plotted from design information only and may change during construction
- All earthworks fill to lots has been placed and compacted on Level 1 basis in accordance with Australian Standard AS3798-2007 "Guidelines on earthworks for commercial and residential developments".

gassman
development
perspectives
est 1985
planning | environment | landscape | engineering | survey
T: 3807 3333 | F: 3287 5461 | www.gassman.com.au
Gold Coast & Logan | 76 Business Street, Yatala QLD | PO Box 392, Beenleigh 4207

Client	Kingsholme Developments Pty. Ltd.
Project	DISCLOSURE PLAN LOT 70 MONTEGO HILLS (Survey plan: SP264750) 97, 105 Upper Ormeau Road, Kingsholme
Real Property Description:	Lot 951 on SP264738

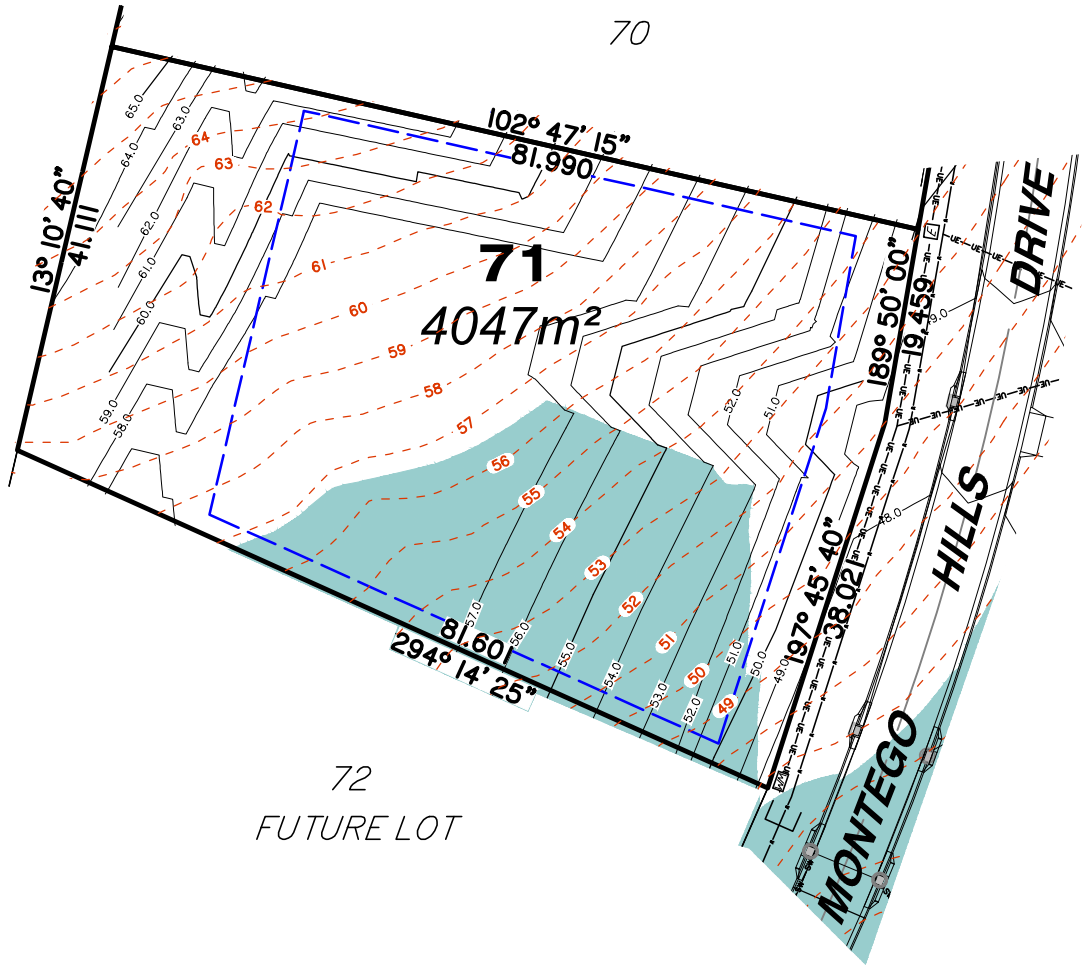
Parish of	Pimpama	Issue Date	27/09/2016
County of	Ward	Meridian	SP264738
Local Govt	GOLD COAST CITY COUNCIL	Level Datum	AHD
		Contour Interval	1.0m
Scale (on A4 original)	1:750	Drawn	R. McGrory
		Date Drafted	10/08/2016
		Checked	T. Geraghty
REFERENCE No.	5543-14		
PLAN No.	5543 S DC LOT 70 A		

LEGEND

- SW-SW- STORMWATER PIPE
- >->- STORMWATER SWALES
- ⊕ STORMWATER MANHOLE
- ⊞ STORMWATER GULLY PIT
- ⊞ GULLY TRAP
- ▽ HEADWALL
- ⊞ WATER METER
- W-W- WATER PIPE
- C-C- WATER CONDUIT
- ⊞ ELECTRICITY PILLAR
- ☀ LIGHT POLE
- UE-UE- UNDERGROUND ELECTRICITY
- 41-41- EXISTING SURFACE CONTOURS
- 41 - DESIGN CONTOURS
- █ DESIGN FILL



PUBLIC USE LAND



72
FUTURE LOT

LEGEND

- Building Envelopes

Typical Building Envelope

Scale 1:750 - Lengths are in Metres.

- Notes:**
- Final areas are subject to design changes, Council approval and field survey and may differ from those shown on this Disclosure Plan.
 - Final presentation of areas will comply with requirements of the Registrar of Titles and may vary from the format on this Disclosure Plan
 - The Seller, under the Contract Terms, is entitled to make Variations to the lot, including its location, area, size, dimensions, and elevation. Without limitation, if the area of the Lot on the Plan is not more than 5% different to the total area of the Lot as shown on this Disclosure Plan, the Variation is deemed to be a Permitted Variation and the Buyer cannot object.
 - Design contours are approximate only and may change during construction
 - Services have been plotted from design information only and may change during construction
 - All earthworks fill to lots has been placed and compacted on Level 1 basis in accordance with Australian Standard AS3798-2007 "Guidelines on earthworks for commercial and residential developments".

gassman
development
perspectives

est 1985

planning | environment | landscape | engineering | survey

T: 3807 3333 | F: 3287 5461 | www.gassman.com.au

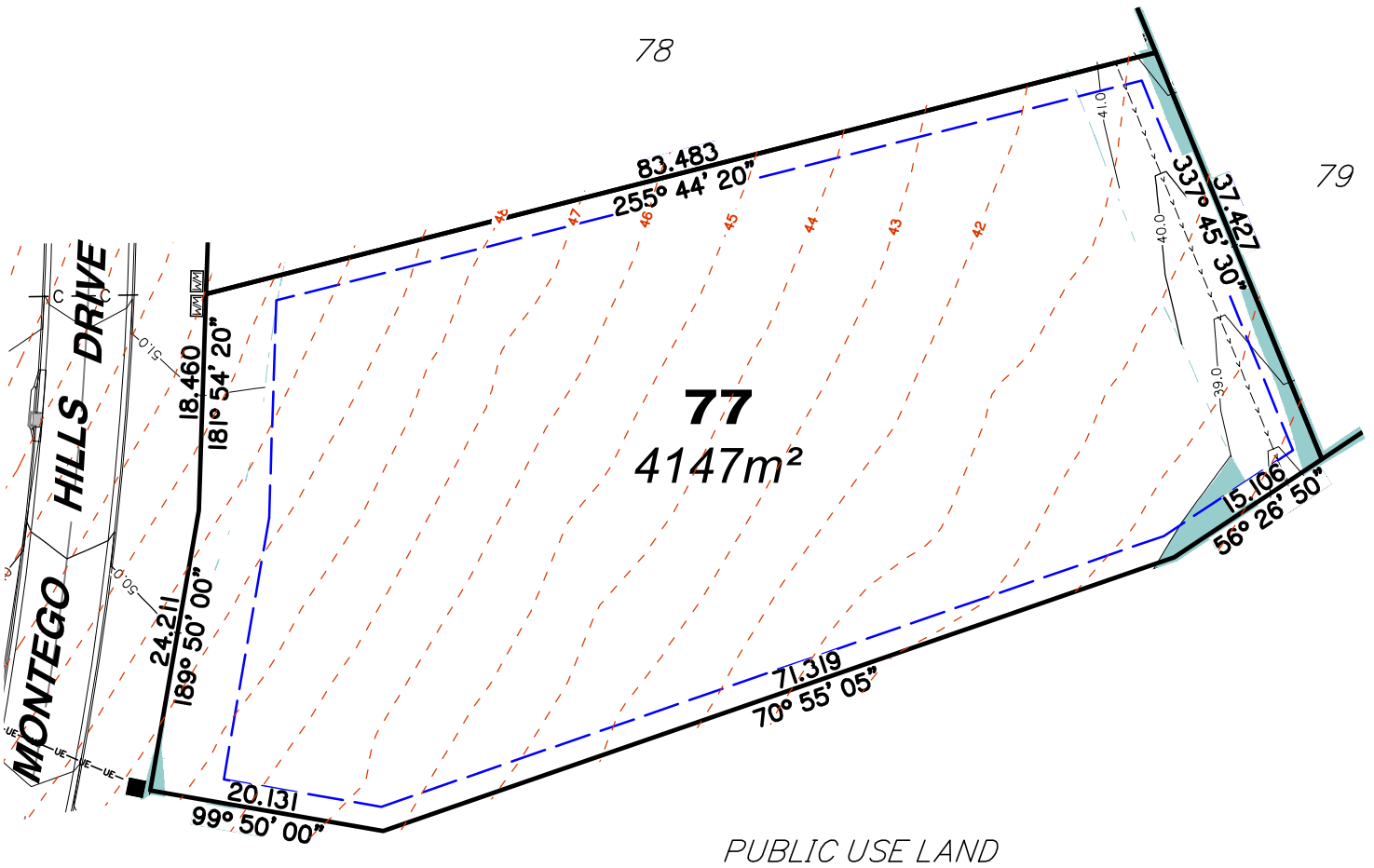
Gold Coast & Logan | 76 Business Street, Yatala QLD | PO Box 392, Beenleigh 4207

Client **Kingsholme Developments Pty. Ltd.**

Project **DISCLOSURE PLAN**
LOT 71
MONTEGO HILLS
(Survey plan: SP264750)
97, 105 Upper Ormeau Road, Kingsholme

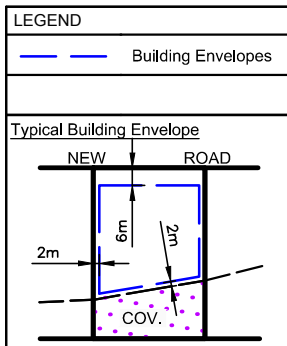
Real Property Description:
Lot 951 on SP264738

Parish of	Pimpama	Issue Date	27/09/2016
County of	Ward	Meridian	SP264738
Local Govt	GOLD COAST CITY COUNCIL	Level Datum	AHD
		Contour Interval	1.0m
		Drawn	R. McGrory
		Date Drafted	10/08/2016
		Checked	T. Geraghty
Scale (on A4 original)	1:750	REFERENCE No.	5543-14
		PLAN No.	5543 S DC LOT 71 A

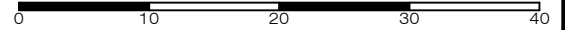


LEGEND

- SW-SW- STORMWATER PIPE
- >->- STORMWATER SWALES
- ⊙ STORMWATER MANHOLE
- ⊕ STORMWATER GULLY PIT
- ⊕ GULLY TRAP
- ⊕ HEADWALL
- ⊕ WATER METER
- W-W- WATER PIPE
- C-C- WATER CONDUIT
- ⊕ ELECTRICITY PILLAR
- ⊕ LIGHT POLE
- UE-UE- UNDERGROUND ELECTRICITY
- 41- - - EXISTING SURFACE CONTOURS
- 41- - - DESIGN CONTOURS
- █ DESIGN FILL



Scale 1:600 - Lengths are in Metres.



Notes:

- Final areas are subject to design changes, Council approval and field survey and may differ from those shown on this Disclosure Plan.
- Final presentation of areas will comply with requirements of the Registrar of Titles and may vary from the format on this Disclosure Plan
- The Seller, under the Contract Terms, is entitled to make Variations to the lot, including its location, area, size, dimensions, and elevation. Without limitation, if the area of the Lot on the Plan is not more than 5% different to the total area of the Lot as shown on this Disclosure Plan, the Variation is deemed to be a Permitted Variation and the Buyer cannot object.
- Design contours are approximate only and may change during construction
- Services have been plotted from design information only and may change during construction
- All earthworks fill to lots has been placed and compacted on Level 1 basis in accordance with Australian Standard AS3798-2007 "Guidelines on earthworks for commercial and residential developments".



planning | environment | landscape | engineering | survey
 T: 3807 3333 | F: 3287 5461 | www.gassman.com.au
 Gold Coast & Logan | 76 Business Street, Yatala QLD | PO Box 392, Beenleigh 4207

Client **Kingsholme Developments Pty. Ltd.**

Project **DISCLOSURE PLAN
LOT 77**

(Survey plan: SP264750)

MONTENGO HILLS

97, 105 Upper Ormeau Road, Kingsholme

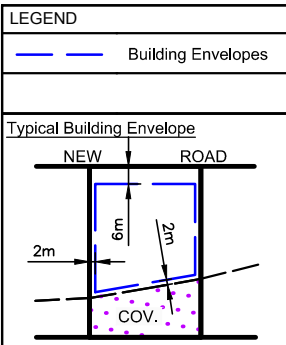
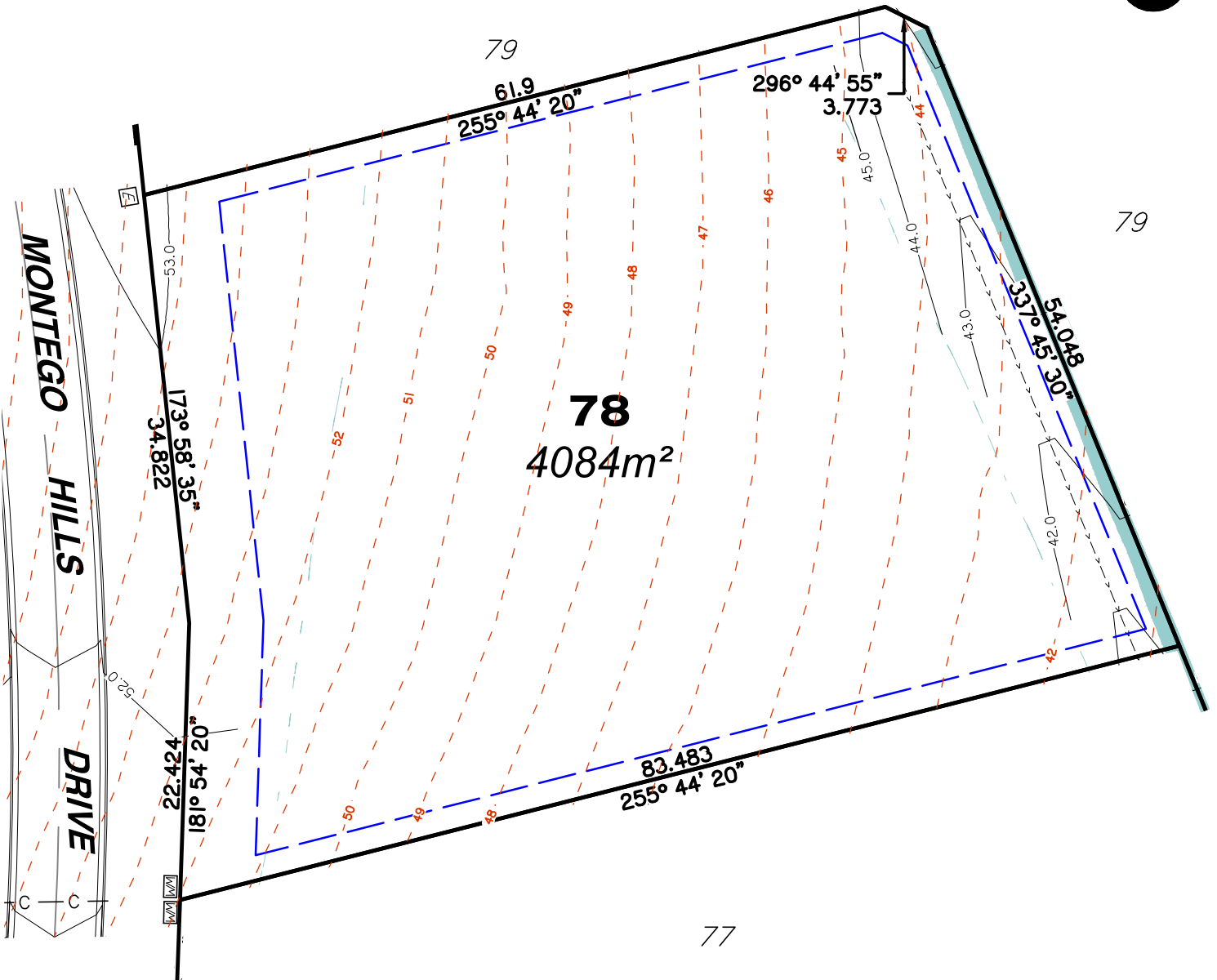
Real Property Description:

Lot 951 on SP264738

Parish of	Pimpama	Issue Date	27/09/2016
County of	Ward	Meridian	SP264738
Local Govt	GOLD COAST CITY COUNCIL	Level Datum	AHD
		Contour Interval	1.0m
		Drawn	R. McGrory
		Date Drafted	10/08/2016
		Checked	T. Geraghty

REFERENCE No. **5543-14**

PLAN No. **5543 S DC LOT 77 A**



- LEGEND**
- SW—SW— STORMWATER PIPE
 - >->-> STORMWATER SWALES
 - ⊕ STORMWATER MANHOLE
 - ⊕ STORMWATER GULLY PIT
 - ⊕ GULLY TRAP
 - ⊕ HEADWALL
 - ⊕ WATER METER
 - W-W- WATER PIPE
 - C-C- WATER CONDUIT
 - ⊕ ELECTRICITY PILLAR
 - ⊕ LIGHT POLE
 - UE-UE- UNDERGROUND ELECTRICITY
 - 41-41- EXISTING SURFACE CONTOURS
 - 41 — DESIGN CONTOURS
 - █ DESIGN FILL

- Notes:**
- Final areas are subject to design changes, Council approval and field survey and may differ from those shown on this Disclosure Plan.
 - Final presentation of areas will comply with requirements of the Registrar of Titles and may vary from the format on this Disclosure Plan
 - The Seller, under the Contract Terms, is entitled to make Variations to the lot, including its location, area, size, dimensions, and elevation. Without limitation, if the area of the Lot on the Plan is not more than 5% different to the total area of the Lot as shown on this Disclosure Plan, the Variation is deemed to be a Permitted Variation and the Buyer cannot object.
 - Design contours are approximate only and may change during construction
 - Services have been plotted from design information only and may change during construction
 - All earthworks fill to lots has been placed and compacted on Level 1 basis in accordance with Australian Standard AS3798-2007 "Guidelines on earthworks for commercial and residential developments".

Scale 1:500 - Lengths are in Metres.

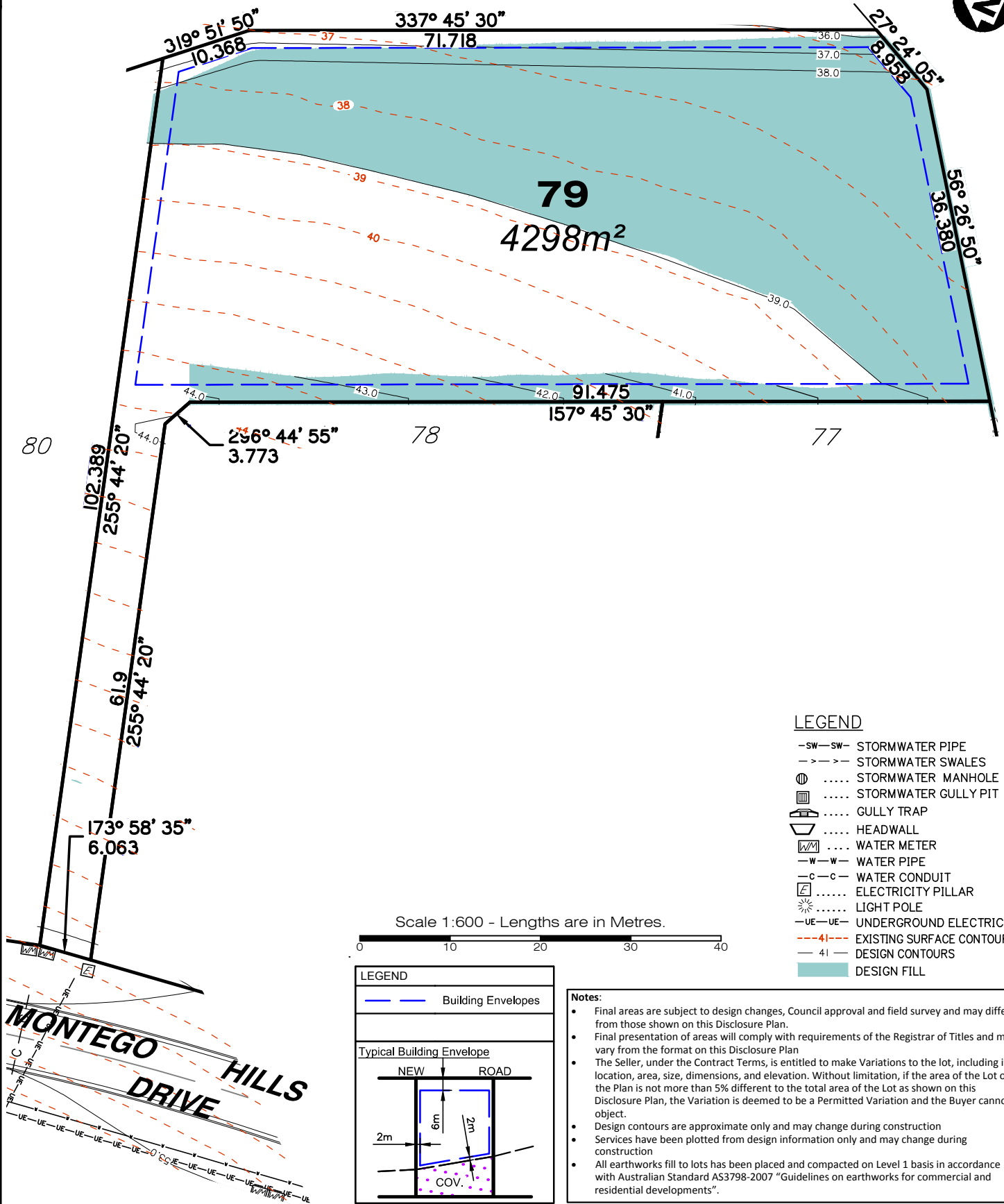
gassman development perspectives
est 1985
planning | environment | landscape | engineering | survey
T: 3807 3333 | F: 3287 5461 | www.gassman.com.au
Gold Coast & Logan | 76 Business Street, Yatala QLD | PO Box 392, Beenleigh 4207

Client **Kingsholme Developments Pty. Ltd.**

Project **DISCLOSURE PLAN**
LOT 78
(Survey plan: SP264750)
MONTEGO HILLS
97, 105 Upper Ormeau Road, Kingsholme

Real Property Description:
Lot 951 on SP264738

Parish of	Pimpama	Issue Date	27/09/2016
County of	Ward	Meridian	SP264738
Local Govt	GOLD COAST CITY COUNCIL	Level Datum	AHD
		Contour Interval	1.0m
		Drawn	R. McGrory
		Date Drafted	10/08/2016
		Checked	T. Geraghty
Scale (on A4 original)	1:500	REFERENCE No.	5543-14
		PLAN No.	5543 S DC LOT 78 A

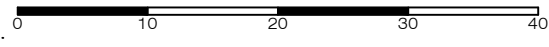


PUBLIC USE LAND

LEGEND

- SW-SW- STORMWATER PIPE
- >->- STORMWATER SWALES
- ⊕ STORMWATER MANHOLE
- ⊞ STORMWATER GULLY PIT
- ⊞ GULLY TRAP
- ⊞ HEADWALL
- ⊞ WATER METER
- W-W- WATER PIPE
- C-C- WATER CONDUIT
- ⊞ ELECTRICITY PILLAR
- ⊞ LIGHT POLE
- UE-UE- UNDERGROUND ELECTRICITY
- 41-41- EXISTING SURFACE CONTOURS
- 41 DESIGN CONTOURS
- DESIGN FILL

Scale 1:600 - Lengths are in Metres.



LEGEND

- Building Envelopes

Typical Building Envelope

Notes:

- Final areas are subject to design changes, Council approval and field survey and may differ from those shown on this Disclosure Plan.
- Final presentation of areas will comply with requirements of the Registrar of Titles and may vary from the format on this Disclosure Plan
- The Seller, under the Contract Terms, is entitled to make Variations to the lot, including its location, area, size, dimensions, and elevation. Without limitation, if the area of the Lot on the Plan is not more than 5% different to the total area of the Lot as shown on this Disclosure Plan, the Variation is deemed to be a Permitted Variation and the Buyer cannot object.
- Design contours are approximate only and may change during construction
- Services have been plotted from design information only and may change during construction
- All earthworks fill to lots has been placed and compacted on Level 1 basis in accordance with Australian Standard AS3798-2007 "Guidelines on earthworks for commercial and residential developments".

gassman
development
perspectives

est 1985

planning | environment | landscape | engineering | survey

T: 3807 3333 | F: 3287 5461 | www.gassman.com.au

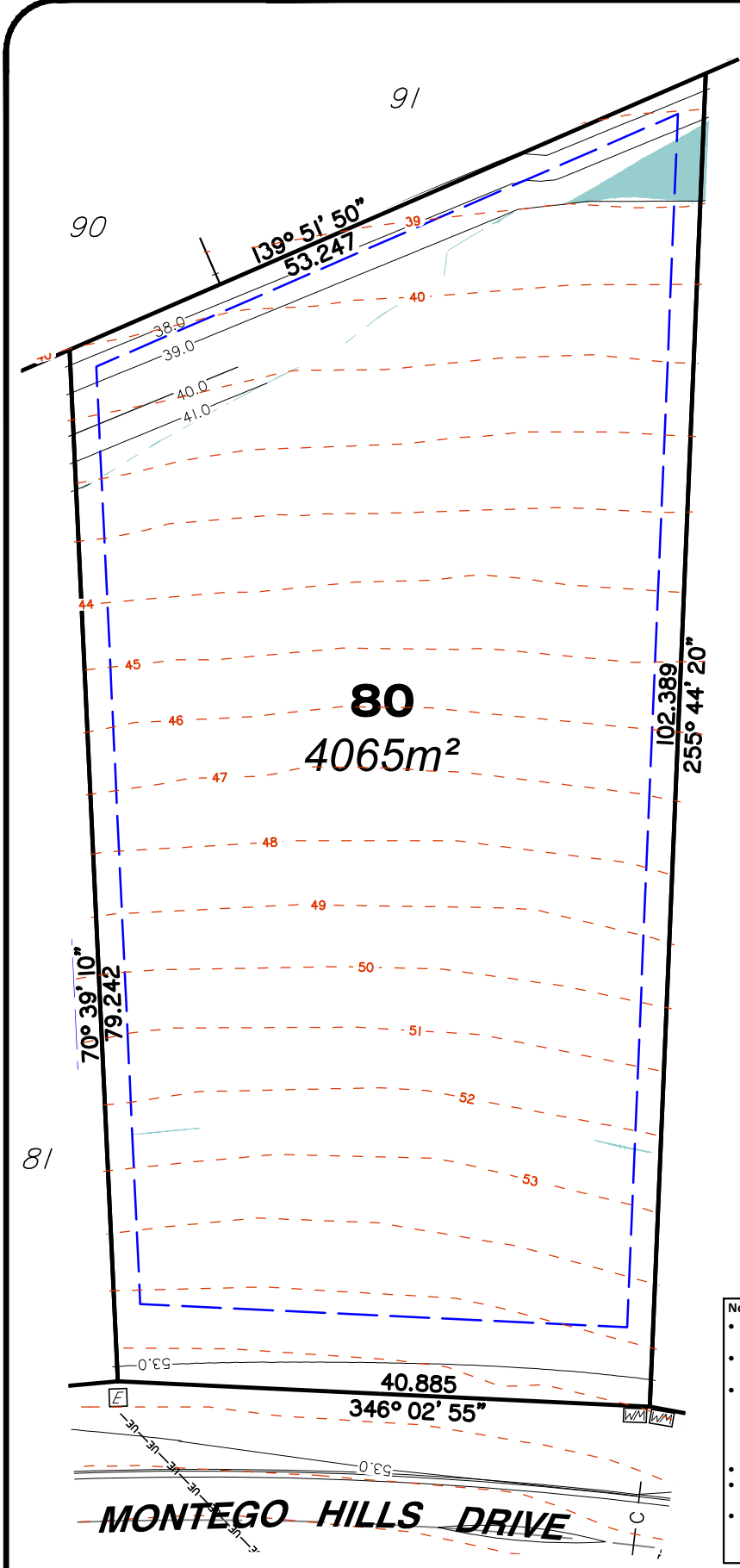
Gold Coast & Logan | 76 Business Street, Yatala QLD | PO Box 392, Beenleigh 4207

Client Kingsholme Developments Pty. Ltd.

Project **DISCLOSURE PLAN**
LOT 79
(Survey plan: SP264750)
MONTEGO HILLS
97, 105 Upper Ormeau Road, Kingsholme

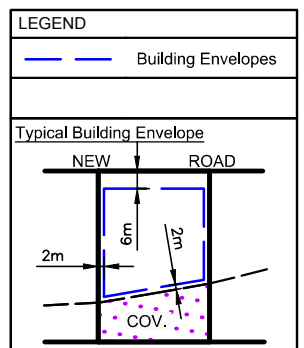
Real Property Description:
Lot 951 on SP264738

Parish of	Pimpama	Issue Date	27/09/2016
County of	Ward	Meridian	SP264738
Local Govt	GOLD COAST CITY COUNCIL	Level Datum	AHD
		Contour Interval	1.0m
		Drawn	R. McGrory
		Date Drafted	10/08/2016
		Checked	T. Geraghty
Scale (on A4 original)	1:600	REFERENCE No.	5543-14
		PLAN No.	5543 S DC LOT 79 A



LEGEND

- SW-SW- STORMWATER PIPE
- >->- STORMWATER SWALES
- ⊙ STORMWATER MANHOLE
- ⊕ STORMWATER GULLY PIT
- ⊓ GULLY TRAP
- ▽ HEADWALL
- ⊓ WATER METER
- W-W- WATER PIPE
- C-C- WATER CONDUIT
- ⊓ ELECTRICITY PILLAR
- ☀ LIGHT POLE
- UE-UE- UNDERGROUND ELECTRICITY
- 4|-4|- EXISTING SURFACE CONTOURS
- 4|-4|- DESIGN CONTOURS
- █ DESIGN FILL



- Notes:**
- Final areas are subject to design changes, Council approval and field survey and may differ from those shown on this Disclosure Plan.
 - Final presentation of areas will comply with requirements of the Registrar of Titles and may vary from the format on this Disclosure Plan
 - The Seller, under the Contract Terms, is entitled to make Variations to the lot, including its location, area, size, dimensions, and elevation. Without limitation, if the area of the Lot on the Plan is not more than 5% different to the total area of the Lot as shown on this Disclosure Plan, the Variation is deemed to be a Permitted Variation and the Buyer cannot object.
 - Design contours are approximate only and may change during construction
 - Services have been plotted from design information only and may change during construction
 - All earthworks fill to lots has been placed and compacted on Level 1 basis in accordance with Australian Standard AS3798-2007 "Guidelines on earthworks for commercial and residential developments".

gassman development perspectives
est 1985

planning | environment | landscape | engineering | survey

T: 3807 3333 | F: 3287 5461 | www.gassman.com.au

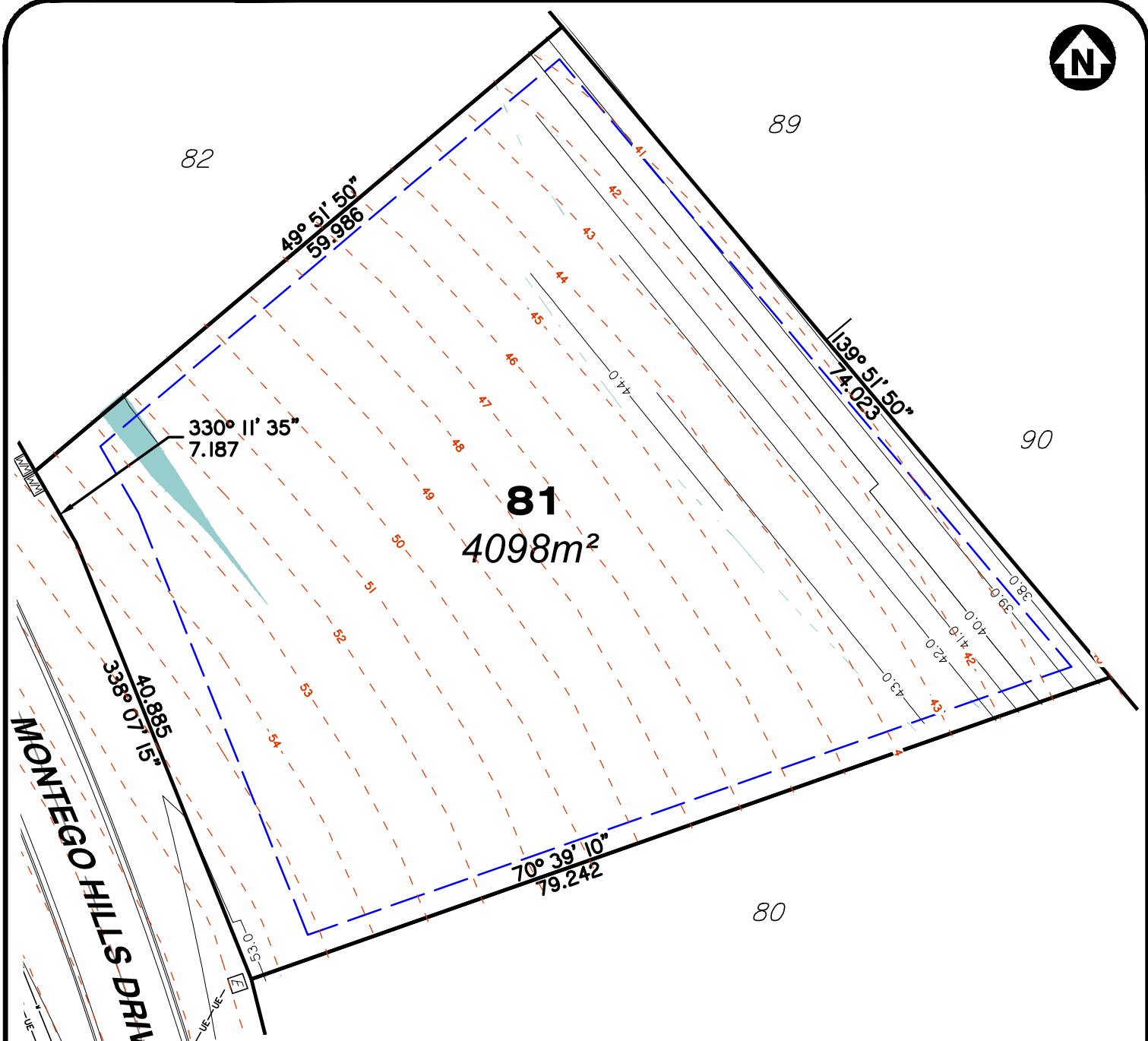
Gold Coast & Logan | 76 Business Street, Yatala QLD | PO Box 392, Beenleigh 4207

Client **Kingsholme Developments Pty. Ltd.**

Project **DISCLOSURE PLAN**
LOT 80
(Survey plan: SP264750)
MONTEGO HILLS
97, 105 Upper Ormeau Road, Kingsholme

Real Property Description:
Lot 951 on SP264738

Parish of	Pimpama	Issue Date	27/09/2016
County of	Ward	Meridian	SP264738
Local Govt	GOLD COAST CITY COUNCIL	Level Datum	AHD
		Contour Interval	1.0m
		Drawn	R. McGrory
Scale (on A4 original)	1:500	Date Drafted	10/08/2016
		Checked	T. Geraghty
REFERENCE No.	5543-14		
PLAN No.	5543 S DC LOT 80 A		



LEGEND

LEGEND

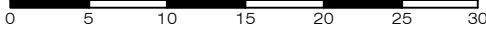
Building Envelopes

Typical Building Envelope

- SW-SW- STORMWATER PIPE
- >>> STORMWATER SWALES
- ⊕ STORMWATER MANHOLE
- ⊞ STORMWATER GULLY PIT
- ⊞ GULLY TRAP
- ⊞ HEADWALL
- ⊞ WATER METER
- W-W- WATER PIPE
- c-c- WATER CONDUIT
- ⊞ ELECTRICITY PILLAR
- ⊞ LIGHT POLE
- UE-UE- UNDERGROUND ELECTRICITY
- 41- EXISTING SURFACE CONTOURS
- 41- DESIGN CONTOURS
- DESIGN FILL

- Notes:**
- Final areas are subject to design changes, Council approval and field survey and may differ from those shown on this Disclosure Plan.
 - Final presentation of areas will comply with requirements of the Registrar of Titles and may vary from the format on this Disclosure Plan
 - The Seller, under the Contract Terms, is entitled to make Variations to the lot, including its location, area, size, dimensions, and elevation. Without limitation, if the area of the Lot on the Plan is not more than 5% different to the total area of the Lot as shown on this Disclosure Plan, the Variation is deemed to be a Permitted Variation and the Buyer cannot object.
 - Design contours are approximate only and may change during construction
 - Services have been plotted from design information only and may change during construction
 - All earthworks fill to lots has been placed and compacted on Level 1 basis in accordance with Australian Standard AS3798-2007 "Guidelines on earthworks for commercial and residential developments".

Scale 1:500 - Lengths are in Metres.



gassman development perspectives

planning | environment | landscape | engineering | survey

T: 3807 3333 | F: 3287 5461 | www.gassman.com.au

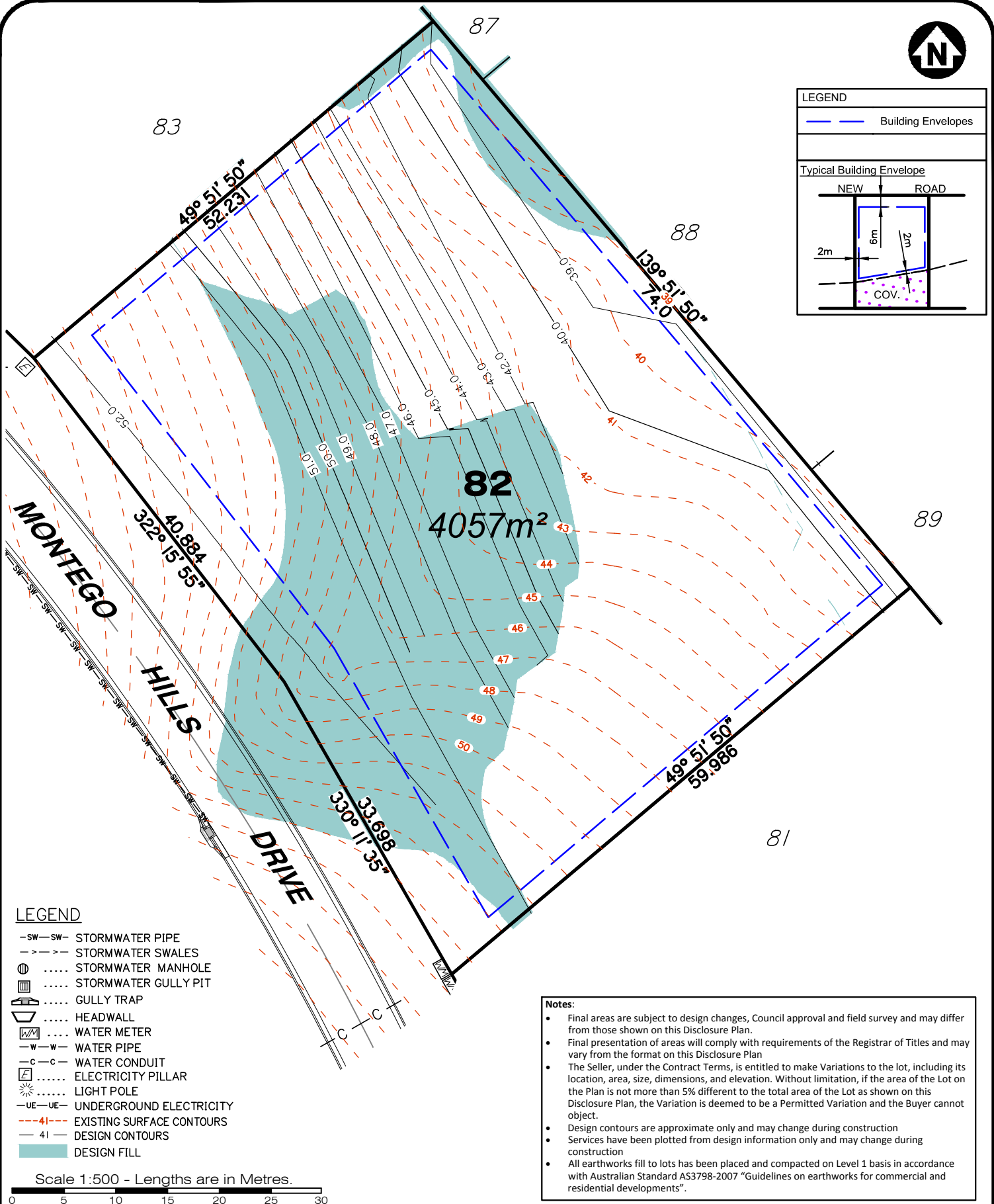
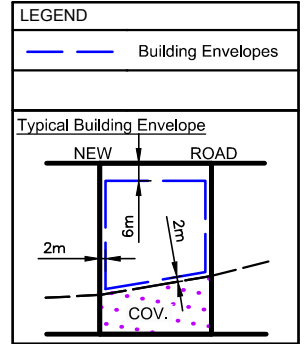
Gold Coast & Logan | 76 Business Street, Yatala QLD | PO Box 392, Beenleigh 4207

Client **Kingsholme Developments Pty. Ltd.**

Project **DISCLOSURE PLAN**
LOT 81
(Survey plan: SP264750)
MONTEGO HILLS
97, 105 Upper Ormeau Road, Kingsholme

Real Property Description:
Lot 951 on SP264738

Parish of	Pimpama	Issue Date	27/09/2016
County of	Ward	Meridian	SP264738
Local Govt	GOLD COAST CITY COUNCIL	Level Datum	AHD
		Contour Interval	1.0m
		Drawn	R. McGrory
		Date Drafted	10/08/2016
		Checked	T. Geraghty
Scale (on A4 original)	1:500	REFERENCE No.	5543-14
		PLAN No.	5543 S DC LOT 81 A



- LEGEND**
- SW-SW- STORMWATER PIPE
 - >->- STORMWATER SWALES
 - ⊙ STORMWATER MANHOLE
 - ⊕ STORMWATER GULLY PIT
 - ⊕ GULLY TRAP
 - ⊕ HEADWALL
 - ⊕ WATER METER
 - W-W- WATER PIPE
 - C-C- WATER CONDUIT
 - ⊕ ELECTRICITY PILLAR
 - ⊕ LIGHT POLE
 - UE-UE- UNDERGROUND ELECTRICITY
 - - - 41 - - - EXISTING SURFACE CONTOURS
 - - - 41 - - - DESIGN CONTOURS
 - █ DESIGN FILL

- Notes:**
- Final areas are subject to design changes, Council approval and field survey and may differ from those shown on this Disclosure Plan.
 - Final presentation of areas will comply with requirements of the Registrar of Titles and may vary from the format on this Disclosure Plan
 - The Seller, under the Contract Terms, is entitled to make Variations to the lot, including its location, area, size, dimensions, and elevation. Without limitation, if the area of the Lot on the Plan is not more than 5% different to the total area of the Lot as shown on this Disclosure Plan, the Variation is deemed to be a Permitted Variation and the Buyer cannot object.
 - Design contours are approximate only and may change during construction
 - Services have been plotted from design information only and may change during construction
 - All earthworks fill to lots has been placed and compacted on Level 1 basis in accordance with Australian Standard AS3798-2007 "Guidelines on earthworks for commercial and residential developments".

Scale 1:500 - Lengths are in Metres.

gassman
development
perspectives

est 1985

planning | environment | landscape | engineering | survey

T: 3807 3333 | F: 3287 5461 | www.gassman.com.au

Gold Coast & Logan | 76 Business Street, Yatala QLD | PO Box 392, Beenleigh 4207

Client **Kingsholme Developments Pty. Ltd.**

Project **DISCLOSURE PLAN**
LOT 82
(Survey plan: SP264750)
MONTEGO HILLS
97, 105 Upper Ormeau Road, Kingsholme

Real Property Description:
Lot 951 on SP264738

Parish of	Pimpama	Issue Date	27/09/2016
County of	Ward	Meridian	SP264738
Local Govt	GOLD COAST CITY COUNCIL	Level Datum	AHD
		Contour Interval	1.0m
		Drawn	R. McGrory
		Date Drafted	10/08/2016
		Checked	T. Geraghty
Scale (on A4 original)	1:500	REFERENCE No.	5543-14
		PLAN No.	5543 S DC LOT 82 A



84

86

87

82

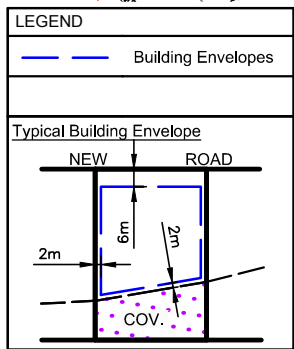
83
4054m²

MONTEGO HILLS DRIVE

LEGEND

- SW-SW- STORMWATER PIPE
- >>> STORMWATER SWALES
- ⊕ STORMWATER MANHOLE
- ⊞ STORMWATER GULLY PIT
- GULLY TRAP
- HEADWALL
- ⊞ WATER METER
- W-W- WATER PIPE
- C-C- WATER CONDUIT
- ⊞ ELECTRICITY PILLAR
- ⊞ LIGHT POLE
- UE-UE- UNDERGROUND ELECTRICITY
- 4|-4| EXISTING SURFACE CONTOURS
- 4|-4| DESIGN CONTOURS
- DESIGN FILL

Scale 1:500 - Lengths are in Metres.



Notes:

- Final areas are subject to design changes, Council approval and field survey and may differ from those shown on this Disclosure Plan.
- Final presentation of areas will comply with requirements of the Registrar of Titles and may vary from the format on this Disclosure Plan
- The Seller, under the Contract Terms, is entitled to make Variations to the lot, including its location, area, size, dimensions, and elevation. Without limitation, if the area of the Lot on the Plan is not more than 5% different to the total area of the Lot as shown on this Disclosure Plan, the Variation is deemed to be a Permitted Variation and the Buyer cannot object.
- Design contours are approximate only and may change during construction
- Services have been plotted from design information only and may change during construction
- All earthworks fill to lots has been placed and compacted on Level 1 basis in accordance with Australian Standard AS3798-2007 "Guidelines on earthworks for commercial and residential developments".

gassman development perspectives
est 1985

planning | environment | landscape | engineering | survey

T: 3807 3333 | F: 3287 5461 | www.gassman.com.au

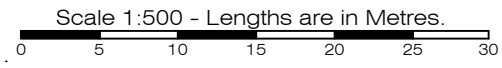
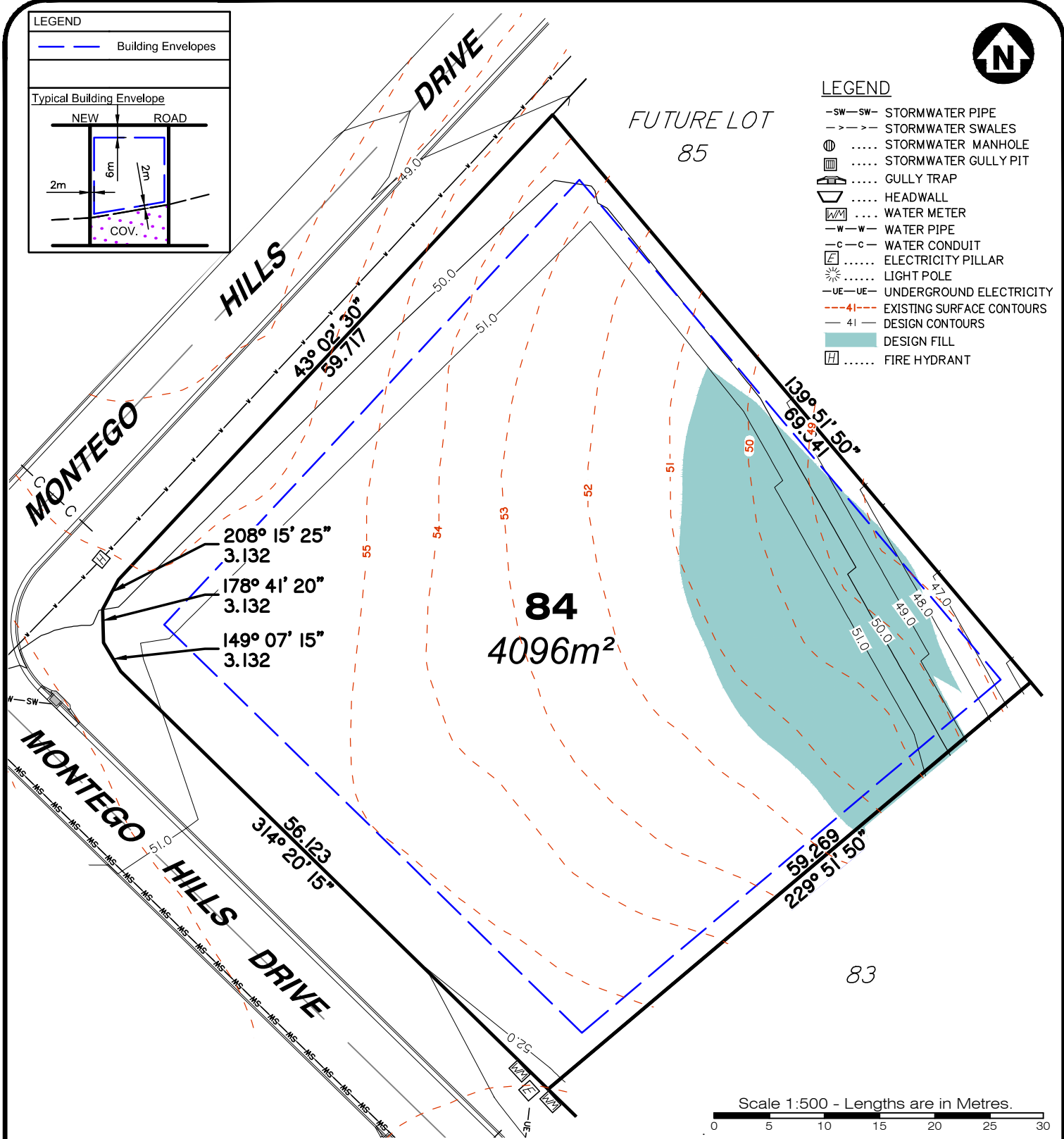
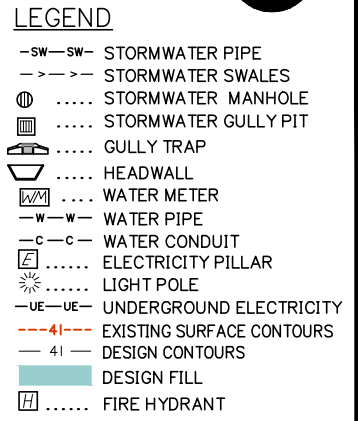
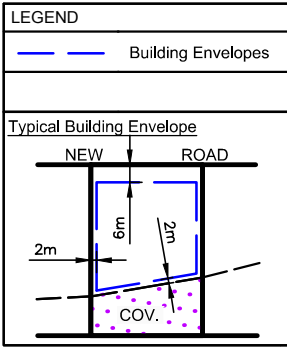
Gold Coast & Logan | 76 Business Street, Yatala QLD | PO Box 392, Beenleigh 4207

Client **Kingsholme Developments Pty. Ltd.**

Project **DISCLOSURE PLAN**
LOT 83
(Survey plan: SP264750)
MONTEGO HILLS
97, 105 Upper Ormeau Road, Kingsholme

Real Property Description:
Lot 951 on SP264738

Parish of	Pimpama	Issue Date	27/09/2016
County of	Ward	Meridian	SP264738
Local Govt	GOLD COAST CITY COUNCIL	Level Datum	AHD
		Contour Interval	1.0m
		Drawn	R. McGrory
		Date Drafted	10/08/2016
		Checked	T. Geraghty
Scale (on A4 original)	1:500	REFERENCE No.	5543-14
		PLAN No.	5543 S DC LOT 83 A



- Notes:**
- Final areas are subject to design changes, Council approval and field survey and may differ from those shown on this Disclosure Plan.
 - Final presentation of areas will comply with requirements of the Registrar of Titles and may vary from the format on this Disclosure Plan
 - The Seller, under the Contract Terms, is entitled to make Variations to the lot, including its location, area, size, dimensions, and elevation. Without limitation, if the area of the Lot on the Plan is not more than 5% different to the total area of the Lot as shown on this Disclosure Plan, the Variation is deemed to be a Permitted Variation and the Buyer cannot object.
 - Design contours are approximate only and may change during construction
 - Services have been plotted from design information only and may change during construction
 - All earthworks fill to lots has been placed and compacted on Level 1 basis in accordance with Australian Standard AS3798-2007 "Guidelines on earthworks for commercial and residential developments".

gassman development perspectives
est 1985

planning | environment | landscape | engineering | survey

T: 3807 3333 | F: 3287 5461 | www.gassman.com.au

Gold Coast & Logan | 76 Business Street, Yatala QLD | PO Box 392, Beenleigh 4207

Client **Kingsholme Developments Pty. Ltd.**

Project **DISCLOSURE PLAN LOT 84**
(Survey plan: SP264750)
MONTEGO HILLS
97, 105 Upper Ormeau Road, Kingsholme

Parish of	Pimpama	Issue Date	27/09/2016
County of	Ward	Meridian	SP264738
Local Govt	GOLD COAST CITY COUNCIL	Level Datum	AHD
		Contour Interval	1.0m
		Drawn	R. McGrory
Scale (on A4 original)	1:500	Date Drafted	10/08/2016
		Checked	T. Geraghty

Real Property Description:
Lot 951 on SP264738

REFERENCE No. **5543-14**
PLAN No. **5543 S DC LOT 84 A**