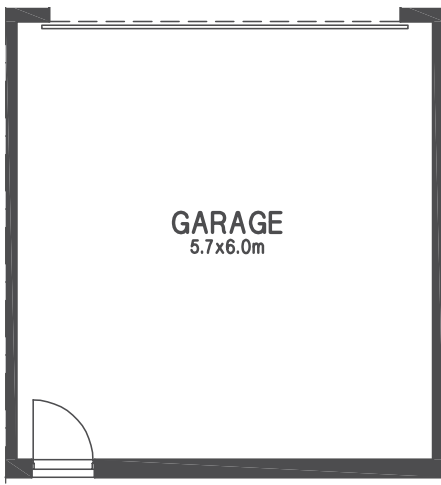


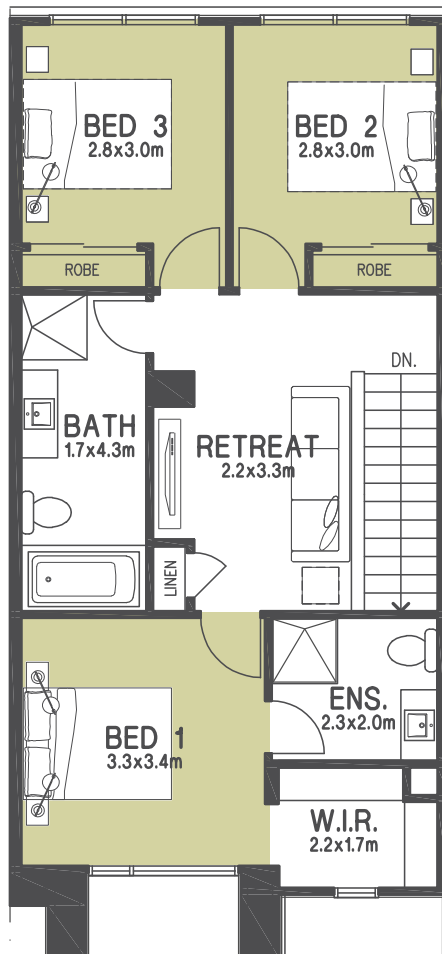
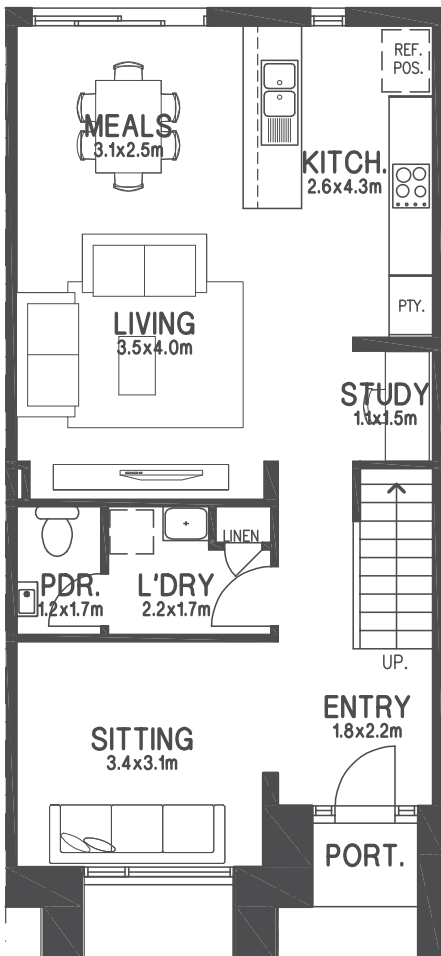
# ROSEDALE 3

LOTS 676-677

 3  3  2



The stylish three bedroom Rosedale offers an innovative, functional design that will delight the whole family. With three spacious living areas and open plan kitchen to meals. It provides a unique combination of purpose and comfort, catering to today's family lifestyle.



Rosedale plan shown based on lot 676 & 677.

## ROSEDALE 3

Ground Floor	72.57m <sup>2</sup>	7.82sq
First Floor	72.34m <sup>2</sup>	7.79sq
Garage	38.82m <sup>2</sup>	4.19sq
Porch	1.65m <sup>2</sup>	0.17sq
<b>TOTAL AREA</b>	<b>185.38m<sup>2</sup></b>	<b>19.97sq</b>



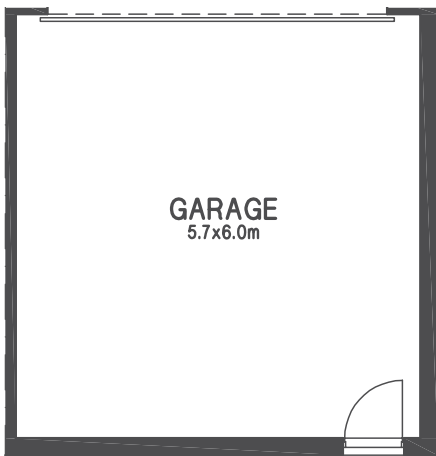
NORTH



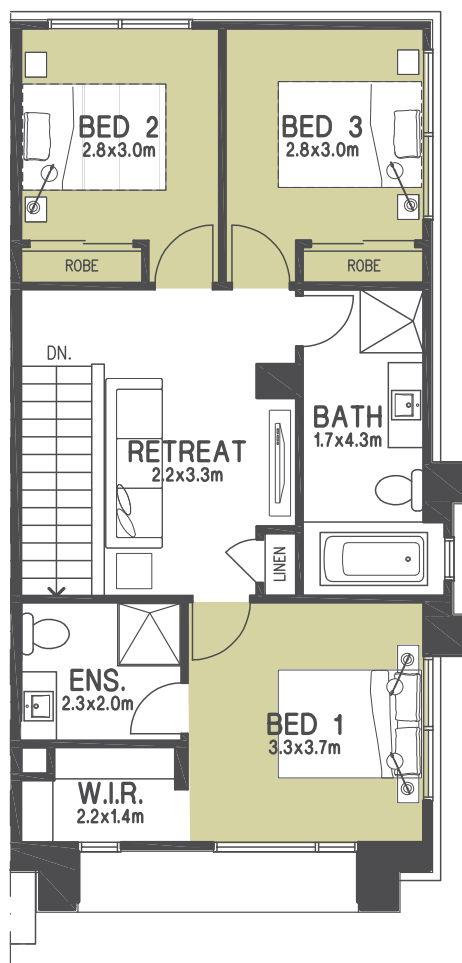
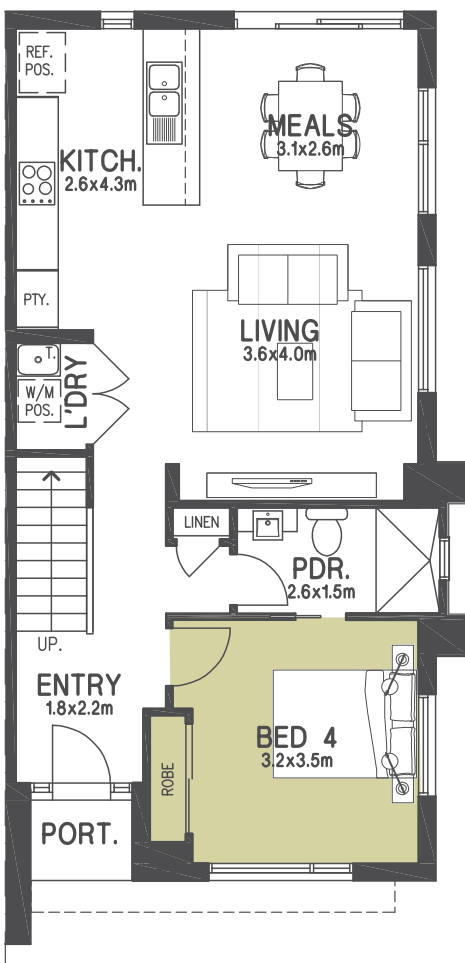
# ROSEDALE 4

LOTS 678

 4  3  2



The stylish four bedroom Rosedale offers an innovative, functional design that will delight the whole family. With two spacious living areas and open plan kitchen to meals. It provides a unique combination of purpose and comfort, catering to today's family lifestyle.



Rosedale plan shown based on lot 678.

ROSEDALE 4		
Ground Floor	74.25m <sup>2</sup>	8.00sq
First Floor	71.73m <sup>2</sup>	7.73sq
Garage	39.56m <sup>2</sup>	4.26sq
Porch	1.65m <sup>2</sup>	0.18sq
<b>TOTAL AREA</b>	<b>187.19m<sup>2</sup></b>	<b>20.17sq</b>

